

Heavy Duty Selector Switch Operators 30.5mm Dia Oil-Tight Ingress Protection IP66 □ (IEC 144)

Two and Three Position Selector Switch Operators

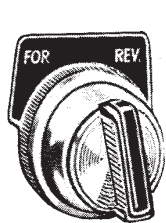
Selector Position		Contact Block Position	2 Position					3 Position																
			↖	↗	↘	↙	↕	↖	↗	↘	↙	↕	↖	↗	↘	↙	↕	↖	↗	↘	↙	↕		
2 – Circuit Units (using one KA1 Contact Block)	A1	Pos. 2	X		X		X	X			X	X			X	X			X	X			X	X
	A2			X		X	X			X	X			X	X			X	X			X	X	
4 – Circuit Units (using two KA1 Contact Block)	A1	Pos. 2	X		X		X	X			X	X			X	X			X	X			X	X
	A2			X		X	X			X	X			X	X			X	X			X	X	
	B1	Pos. 1	X		X		X			X	X			X	X			X	X			X	X	
	B2			X		X	X			X	X			X	X			X	X			X	X	
Cam Type			A		E		D		B		C		D		E		F		G					
Description	Order Class 9001	Type...	Type...	Type...	Type...	Type...	Type...	Type...	Type...	Type...	Type...	Type...	Type...	Type...	Type...	Type...	Type...	Type...	Type...	Type...	Type...	Type...	Type...	Type...
Maintained Contact	Standard Knob – Black # Key Operated	TS-1 TS-1K*							TS-2 TS-2K*	TS-3 TS-3K*	TS-4 TS-4K*	TS-5 TS-5K*	TS-6 TS-6K*	TS-7 TS-7K*										
Spring Return Both Sides to Centre +	Standard Knob – Black # Key Operated								TS-8 TS-8K5	TS-9 TS-9K5	TS-10 TS-10K5	TS-11 TS-11K5	TS-12 TS-12K5	TS-13 TS-13K5										
Spring Return Left to Centre +	Standard Knob – Black # Key Operated				TS-14† TS-14K2†										TS-101*									
Spring Return Right to Centre +	Standard Knob – Black # Key Operated				TS-27‡ TS-27K1‡										TS-102*									

*Switch includes Cams B to G

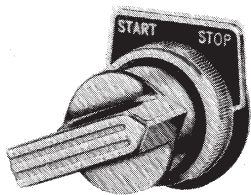
Four Position Selector Switch Operators

4 Circuit Units using TB Contact Block

Description	Cam Type	↖	↗	↘	↙	Features	Order Class 9001 Type...
Maintained Contact	H	A1 A2 B1 B2				Standard Knob-Less Colour Cap Black	TS-401



2 position Standard operator

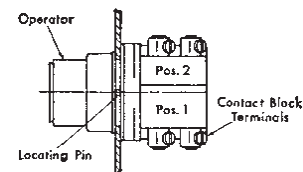


Gloved Hand Knob ▲



3 position Key operator

Contact Block Position (referred to in 'Two and Three Position Selector Switch Operators' table)



* KEY OPERATED SELECTOR SWITCH TYPE NUMBER MUST BE COMPLETED BY SELECTING APPROPRIATE KEY WITHDRAWAL NUMBER FROM TABLE BELOW. Positions marked "Yes" are those in which key can be withdrawn, thereby locking switch in that position. Insert the appropriate number to complete the type number. For security, non standard keys are available. Refer to your local field office for details.

Number	2 Position Switches			3 Position Switches						
	1	2	3	4	5	6	7	8	9	10
Left	Yes	No	Yes	Yes	No	No	Yes	Yes	No	Yes
Centre				No	Yes	No	Yes	No	Yes	Yes
Right	No	Yes	Yes	No	No	Yes	No	Yes	Yes	Yes

Contact blocks Page 1a6
 Accessories..... Pages 1a8 – 1a10
 Enclosures..... Page 1a11 and 1a13
 Dimensions Page 1a14

Ordering Instructions
 State... Class and Type
 Eg: Class 9001 type TS-2

For selector switches with coloured inserts*order switch with black insert plus separate colour insert*from page 1a9.

□ When mounted in a suitable enclosure

▲ For Gloved Hand Knob order switch plus Class 9001,*Type T7. This knob cannot be fitted to 3 position*spring return, left or right to centre type operators

+ Type TF contact block cannot be used on these operators.

† These operators operate left-centre rather than left-right.

‡ These operators operate centre-right rather than left-right.

Note: Std key supplied with key operated types is NQ1101.
 Non std key combinations available on request.