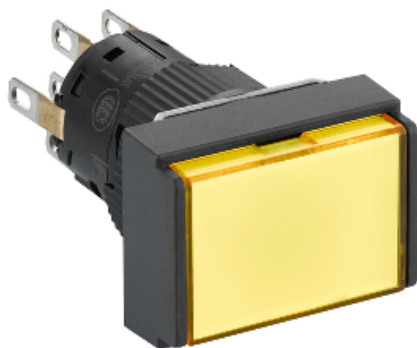


Price* : 13.75 GBP



Main

Range of product	Harmony XB6E
Product or component type	Illuminated monolithic push-button
Device short name	XB6E
Bezel material	Plastic
Mounting diameter	16 mm
Sale per indivisible quantity	5
Shape of signaling unit head	Rectangular
Type of operator	Spring return
Operator profile	Yellow flush
Contacts type and composition	2 C/O
Contact operation	Snap action
Connections - terminals	Fast connector socket Solder terminal, clamping connection $\leq 0.75 \text{ mm}^2$ / AWG 19 min Insulated faston : 2.8 x 0.5 mm
Contacts material	Gold-flashed silver
Light source	Integral LED
[Us] rated supply voltage	12 V DC polarised

Complementary

Product weight	0.006 kg
Operating position	Any position
Marking	CE
Mechanical durability	1000000 cycles
Contact resistance	< 50 mOhm for 1/6 V
Short-circuit protection	2 A by gG cartridge fuse
[Ith] conventional free air thermal current	3 A with fast connector socket 5 A
[Ie] rated operational current	1.5 A at 120 V, AC-12 conforming to EN/IEC 60947-5-1 1 A at 240 V, AC-12 conforming to EN/IEC 60947-5-1 1 A at 24 V, DC-12 conforming to EN/IEC 60947-5-1 0.7 A at 24 V, DC-13 conforming to EN/IEC 60947-5-1 0.2 A at 125 V, DC-12 conforming to EN/IEC 60947-5-1 0.15 A at 125 V, DC-13 conforming to EN/IEC 60947-5-1

Electrical durability	100000 cycles AC, 0.7 A - 220 V conforming to EN/IEC 60947-5-1 appendix C
Signalling type	Steady
Current consumption	10 mA
Service life	30000 h

Environment

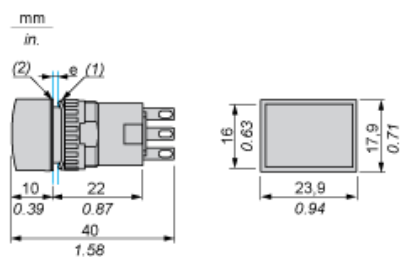
Ambient air temperature for storage	-40...70 °C
Ambient air temperature for operation	-10...55 °C
IP degree of protection	IP65 conforming to IEC 60529
Standards	IEC 60947-1 IEC 60947-5-1 JIS C 4520 JIS C 852 UL 508 CSA C22.2 No 14
Product certifications	CCC cURus
Vibration resistance	1 mm (10...55 Hz) conforming to IEC 60068-2-6
Shock resistance	10 gn (duration = 11 ms) for half sine wave acceleration conforming to IEC 60068-2-27

Contractual warranty

Warranty period	18 months
-----------------	-----------

Pushbutton

Rectangular Head



- (1) Anti-rotation plate (thickness: 0.6 mm / 0.02 in.)
- (2) Seal (thickness: 0.5 mm / 0.01 in.)
- e panel thickness: 0.5 mm (0.01 in.) ≤ e ≤ 6 mm (0.24 in.)

Panel Cut-Out and Mounting

Rectangular Head

