

SC Circuit separator and separator end section (cont.)

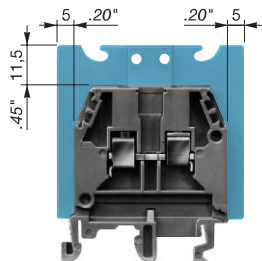
Separator end section

Snap-on end sections for blocks / separators

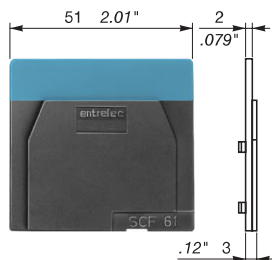
SCF

An SCF separator is snapped onto the terminal block before mounting on the rail. It can also be used as an end section.

✓ Allows mounting of a protective cover CPM, and a marker-holder PEP.



✓ Allows marking, by the user, on the back of the separator.

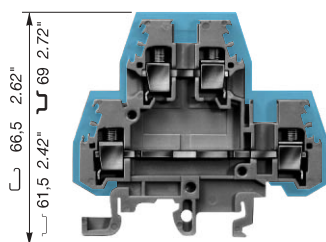


For blocks : **M 4/6** except **D** and **G**
M 6/8 - M 10/10
M 4/6.H
M 1,5/6.HH and **ADV**

Thickness : 2 mm .079"

SCF61 grey **0114 202.25**

✓ For **M 4/6.D** block only



Extends 2 mm .079" around the block.

Thickness : 1 mm .039"

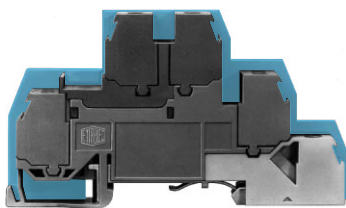
For **M 4/6.D** block

SCF6.D grey **0118 495.17**

For **M 4/6.D V0** block

SCF6.D V0 beige **0198 495.10**

✓ Only for **NTLP** blocks with cut-out for busbar passage. Snapped on **PR3**, **PR4** and **PR5** rails.



Extends 3 mm .12" around the block except the top.

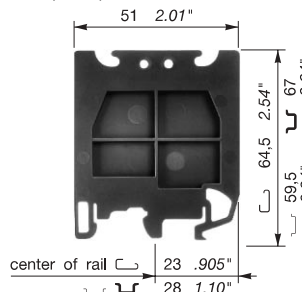
Thickness : 1,5 mm .059"

SCF.D grey **0114 117.07**

Snap-on end sections for rails / separators

SCFM6

✓ Allows mounting of a protective cover CPM, and a marker-holder PEP. Mounting on **PR1**, **PR3**, **PR4** and **PR5** rails



For blocks : **M 4/6**

M 6/8

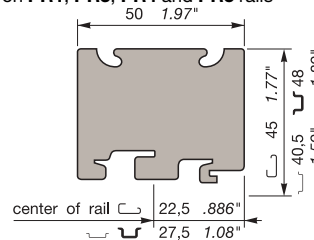
M 10/10

Thickness : 3 mm .118"

SCFM6 grey **0114 825.05**

SCF9

✓ Allows mounting of a protective cover CPM, and a marker-holder PEP. Mounting on **PR1**, **PR3**, **PR4** and **PR5** rails



For blocks : **M 6/9.EE**

M 6/12.FF

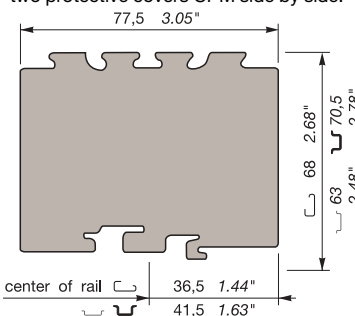
Thickness : 1 mm .039"

SCF9* white **0103 672.01**

* This separator does not replace an end section which must be used on the block.

SCFT1

✓ Separator for use with 1/4 turn terminal blocks, which allows mounting of one or two protective covers CPM side by side.



Thickness : 1 mm .039"

SCFT1 grey **0103 588.26**

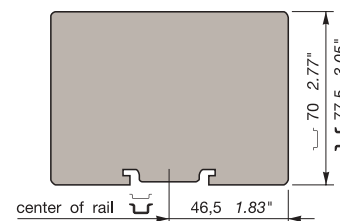
Same snap-on feature as separator SCF9
Thickness of the separator : 77,5 mm 3.05"

SCFEX

Separator for use with explosive atmosphere terminal blocks.

It can also be used for blocks spacing 5 to 16 mm.

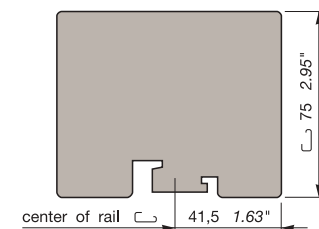
✓ Mounting on **PR3** and **PR5** rails



Thickness : 2,4 mm .094"

SCFEX3* grey **0103 620.01**

✓ Mounting on **PR1** rail only.



Thickness : 2,4 mm .094"

SCFEX1* grey **0103 619.04**

* When the block used has snap-on feature, use circuit separator SCF.