



a xylem brand

# **iL500P<sup>plus</sup>** **PUMP KIT** **SUBMERSIBLE** **& IN-LINE**

## **DIESEL** *or* **WATER** **TRANSFER**

*iL500PK 12 volt d.c*  
*iL500PK-24 24 volt d.c*

- ◆ *Pumps fresh water, sea water and diesel*
- ◆ *Fast diesel refuelling and transfer with no spillage*
- ◆ *Bilge pump out in tight areas*
- ◆ *Water transfer; deck showers; and general wash-down*
- ◆ *Agricultural spraying, carboy and drum emptying and transfer*
- ◆ *Robust, slim line with clip-on easy clean filter*

**FLOW RATE:**

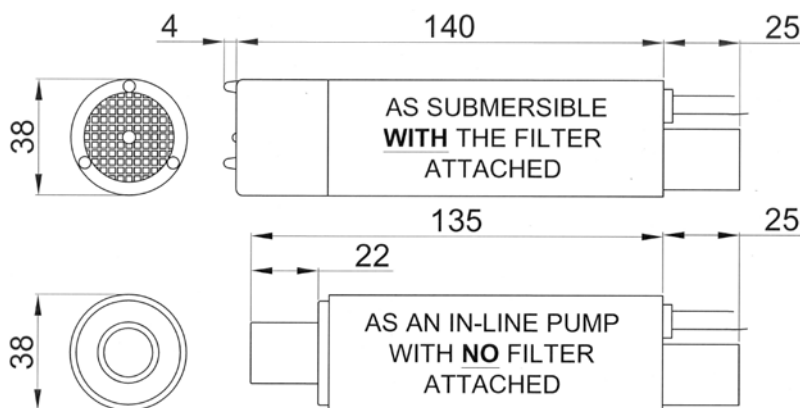
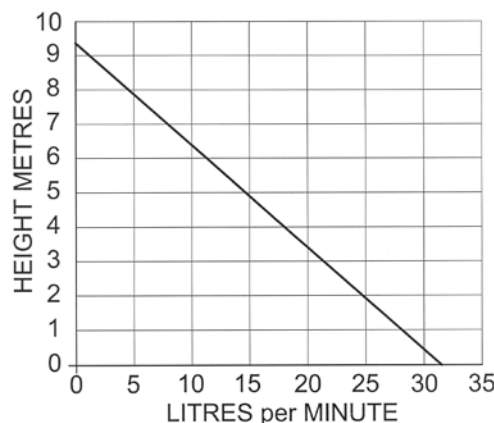
*Flow rate and current reduces as the height to be pumped increases*

**RECOMMENDED FUSE SIZE:**

*12 volt – 6 amp  
24 volt – 3 amp*

**WEIGHT:** 1.22 Kg

**CONNECTIONS:** for 19mm (¾") bore hose



- ◆ Up to 32 litres (7 gallons) per minute
- ◆ Suitable for diesel fuel, water and seawater
- ◆ Temperatures up to 80°C
- ◆ Includes 4m lay-flat hose, adjustable spray nozzle, 4m electrical cable with crocodile clips
- ◆ Intermittent duty



*Not suitable for pumping petrol, light hydrocarbons, non-aqueous solvents*

Doc 696/13