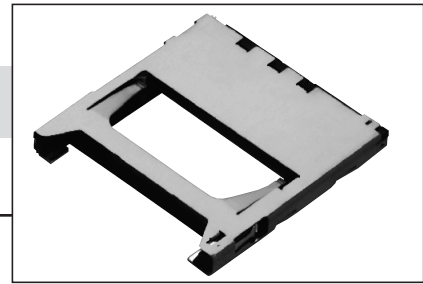


SD Card (Ultra Low Profile, Push Insertion/Extraction)

FPS 009-24 SERIES



ORDERING INFORMATION

FPS009- 2400- 0

Card Series

0: Only Tape and Reel Packaging

Characteristics

Current Rating:	0.5A
Insulation Resistance:	1,000M Minimum
Withstanding Voltage:	AC250Vrms
Contact Resistance:	40m Maximum
Operating Temperature:	-25°C ~ +85°C
Mating Cycles:	10,000 Insertions (office environment)

Material and Finish

Insulator:	UL94V-0
Contact:	Copper Alloy
Plating:	Separate Plating
	Contact Position: Gold Plating

Features

1. Smooth extraction by Push-in/Push-out function
2. Ejection mechanism type for direct mounting
3. Compact, Low profile-2.8mm, Light Weight
4. Polarity mechanism to prevent mis-insertion
5. 3 Step sequential contacting design (optional)
6. Brake mechanism to control MMC ejection
7. Card detector is optional
8. Write protection switch
9. With a mechanism to coming off to SD Card

Applications

- Handy Phone
- Digital Video Camera
- Digital Camera
- PDA
- MP3 Player

CONNECTOR OUTLINE DIMENSIONS (reference only)

