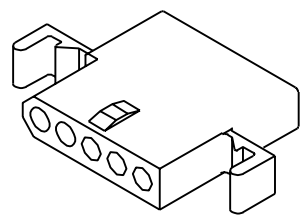
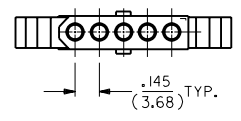
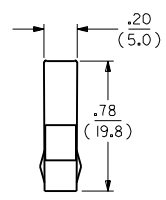
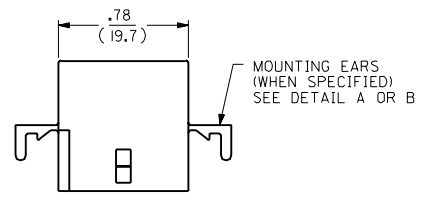
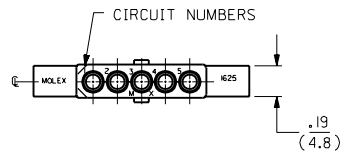
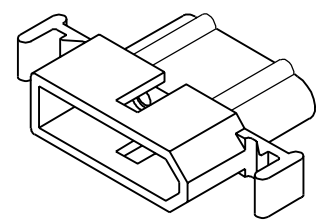
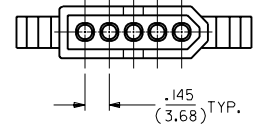
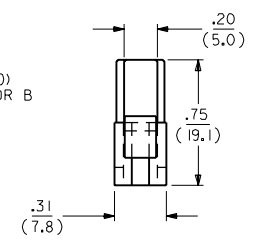
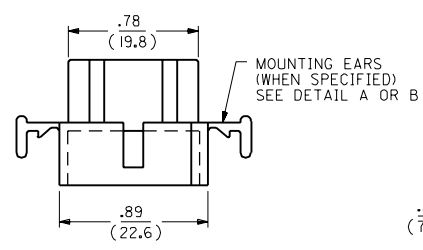
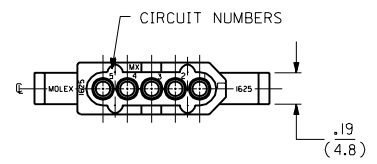


RECEPTACLE



RECEPTACLE HOUSING
SHOWN WITH STANDARD EARS

PLUG



PLUG HOUSING
SHOWN WITH STANDARD EARS

F	2	F	F	REVISED & REDRAWN
F	1	F	F	EGR * US 1981
MFG.	SH.	REV.	LTR.	KBW 01-26-89 RW
				REVISIONS

DIMENSIONS SHOWN METRIC (INCH)		TITLE	
UNLESS OTHERWISE SPECIFIED TOLERANCES: ANGULAR ± .040°		.062/(1.57) HOUSINGS PLUG & RECEPTACLE 5 CIRCUIT ± .145/(3.68)C	
3 PLACE ± .010	---	MOLEX INCORPORATED LITTLE ROCK, AR 60532 U.S.A.	SHEET NO. DATE
2 PLACE ± .014	± 0.25		1 OF 2 01/26/89
1 PLACE ---	± 0.35		
DRAFT WHERE APPLICABLE MUST REMAIN WITHIN DIMENSIONS		PART NO. DRWG. NO.	
SEE CHART		SD-1625-5	
DRWG. BY: KBW	CHKD. BY: RW	FILE NAME: SD 1625SX1	DIV. SIZE: CP C
APP'D. BY: RAS	SCALE: 2:	THIS DRAWING CONTAINS INFORMATION THAT IS PROPRIETARY TO MOLEX INC. AND SHOULD NOT BE USED WITHOUT WRITTEN PERMISSION.	

13 12 11 10 9 8 7 6 5 4 3 2 1

PLUG		RECEPTACLE	
PART NO.	ENG. NO.	PART NO.	ENG. NO.
03-06-2054	I625-5P	03-06-1055	I625-5R
03-06-2055	I625-5P1	03-06-1056	I625-5R1
03-06-7054	I625-5PBK	03-06-6055	I625-5RBK
03-06-7055	I625-5P1BK	NOT TOOLED	I625-5R2

LEGEND:

I625-5****

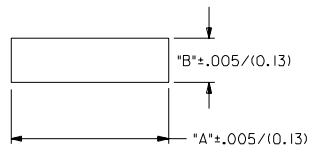
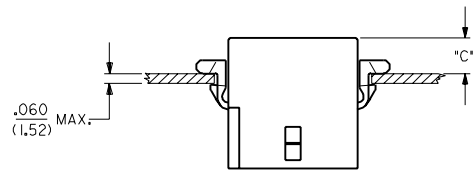
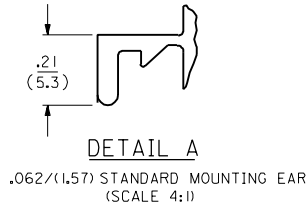
CIRCUIT SIZE

P = PLUG
R = RECEPTACLE

BLANK = WITH STANDARD EARS
1 = WITHOUT EARS
2 = WITH PREBENT EARS

COLOR:

BLANK = NATURAL COLOR
AM = AMBER BK = BLACK BU = BLUE
BN = BROWN GY = GRAY GN = GREEN
OR = ORANGE RD = RED YW = YELLOW

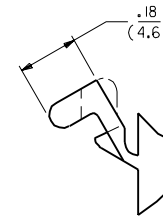
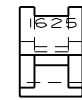


RECOMMENDED PANEL OPENING

HOUSING	DIM. "A"	DIM. "B"	"C" PREBENT EAR	"C" STANDARD EAR
PLUG	1.044/(26.52)	.318/(8.08)	.19/(4.8)	.18/(4.6)
RECEPT.	.940/(23.88)	.265/(6.73)	.21/(5.3)	.20/(5.1)

NOTES:

1. MOLEX PRODUCT SPEC 02-06 APPLIES.
2. ACCEPTS MOLEX .062 SERIES TERMINALS.
3. MATERIAL: NYLON TYPE 6/6, 94V-2.



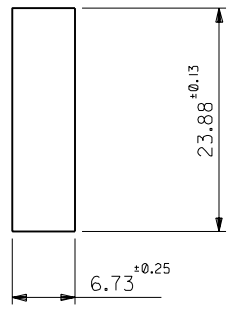
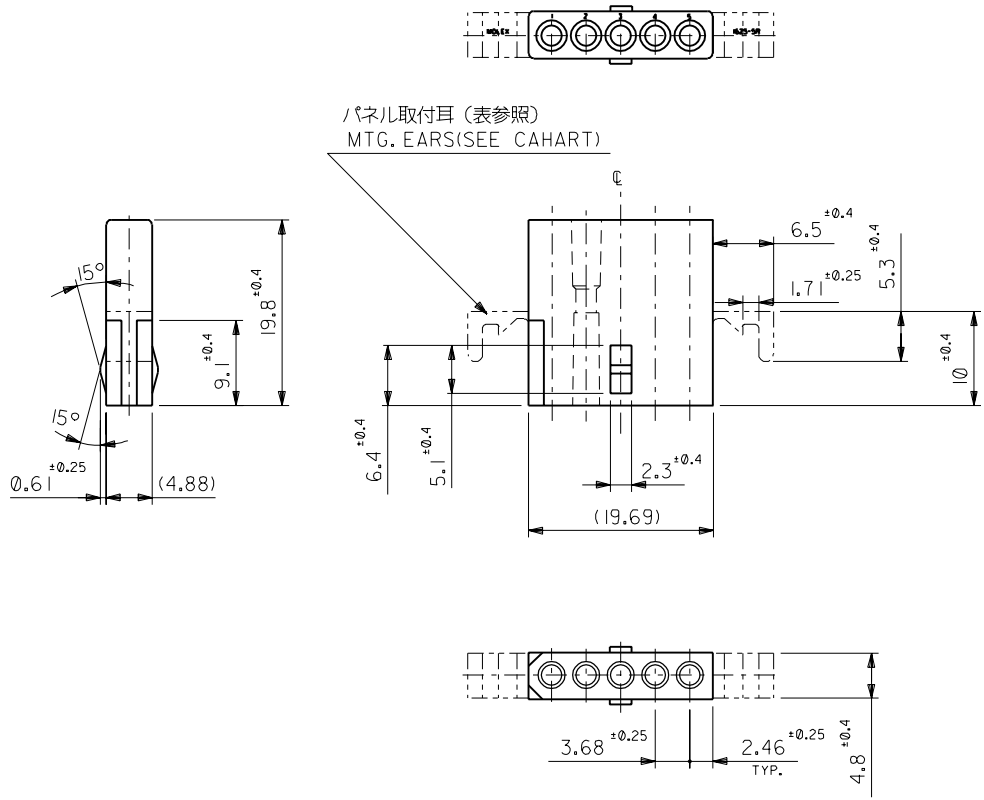
DIMENSIONS SHOWN (METRIC) INCH		UNLESS OTHERWISE SPECIFIED TOLERANCES ANGULAR ± .009		REVISIONS		DRAWING NO.		DATE	
3 PLACE	± .010	---	---	F		SEE SHEET 1		01/26/89	
2 PLACE	± .01	± 0.25		LTR.		REVISIONS		DRAWING NO.	
1 PLACE	---	± 0.35		LTR.		REVISIONS		DRAWING NO.	
DRAFT WHERE APPLICABLE MUST REMAIN WITHIN DIMENSIONS				BY: KBW		CHK'D: RW		FILE NAME: SD1625X2	
APP'D: RAS				SCALE: 2x		SCALE: 2x		DRAWING NO. SD-1625-5	
DRAWN BY: RAS				SCALE: 2x		SCALE: 2x		THIS DRAWING CONTAINS INFORMATION THAT IS PROPRIETARY TO MOLEX INC. AND SHOULD NOT BE USED WITHOUT WRITTEN PERMISSION	

TITLE		REVISIONS		DRAWING NO.		DATE	
.062/(1.57) HOUSINGS PLUG & RECEPTACLE 5 CIRCUIT .145/(3.68)		F		SEE SHEET 1		01/26/89	
MOLEX INCORPORATED LITTLE ROCK, U.S.A.		SHEET NO. 2		DRAWING NO. SD-1625-5		DATE 01/26/89	
SEE CHART		SCALE: 2x		SCALE: 2x		DRAWING NO. SD-1625-5	
THIS DRAWING CONTAINS INFORMATION THAT IS PROPRIETARY TO MOLEX INC. AND SHOULD NOT BE USED WITHOUT WRITTEN PERMISSION		SCALE: 2x		SCALE: 2x		DRAWING NO. SD-1625-5	

13 12 11 10 9 8 7 6 5 4 3 2 1

DWG. NO. SD-1625-5R*

DIMENSIONS IN METRIC DO NOT SCALE DRAWING



パネル取付穴寸法(厚さ 1.52最大)
RECOMMENDED PANEL HOLE DIMENSION(THK. 1.52 MAX)

注記
NOTES

- 材質: ZYTEL 101. (ナイロン66, 94V-2)
MATERIAL: ZYTEL 101. (NYLON66, 94V-2)
- () 内寸法は参考値
() DIMENSIONS ARE FOR REFERENCE

1625-5R-1		無 WITHOUT	
1625-5R		有 WITH	
ENG. NO.		MTG. EARS	
材料 MATERIAL		図中参照 REFER TO DRAWING	
仕上げ FINISH		—	
適用電線範囲 WIRE RANGE		—	
被覆外径 INS. RANGE		—	
DRAWN BY '96/07/02 H.IIJIMA		CHK'D BY '96/07/02 M.FUKUSHIMA	
APP'D BY '96/07/02 M.ENOMOTO		尺度 SCALE 2 : 1	
DWG. NO. SD-1625-5R*		REV A	

角度 ANGLE	±3°
30°以上 OVER	±0.3
10°以上 30°未満 UNDER	±0.25
10°未満 UNDER	±0.2
一般公差 GENERAL TOLERANCES	

記号 LTR	A	変更内容 REVISION RECORD	再作図 REDRAWN (JC70305)	DR. CHR.	M.F.	日付 DATE	'96/07/02
--------	---	----------------------	-----------------------	----------	------	---------	-----------

THIS DRAWING CONTAINS INFORMATION THAT IS PROPRIETARY TO MOLEX(JAPAN) AND SHOULD NOT BE USED WITHOUT WRITTEN PERMISSION
本図面は日本モレックス(株)の所有する情報を含むもので 当社の許可なく複製を禁止する。 EN-01C(032)MXJ-32

8

7

6

5

4

3

2

1

1625-5R36