

SURGE SUPPRESSOR, RC ELEMENT, 127...240V AC, 150...250V DC, FOR CONTACTORS SIZE S2

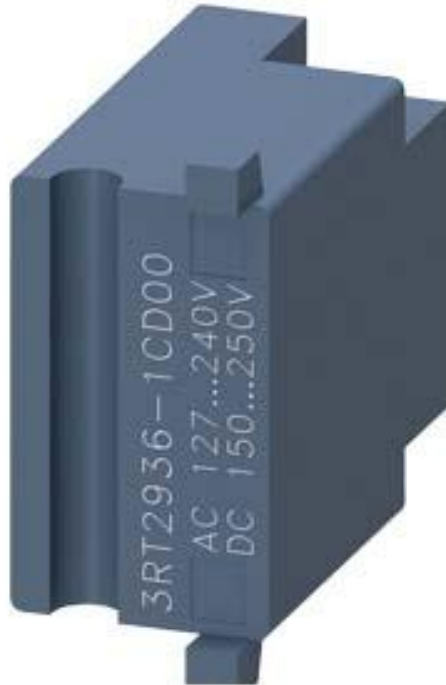


Figure similar

General technical data:		
product brand name		SIRIUS
Product designation		surge suppressor
Size of contactor		S2
Design of the surge suppressor		RC element
Ambient temperature		
• during storage	°C	-40 ... +80
• during operation	°C	-25 ... +60
Control circuit/ Control:		
Type of voltage of the control supply voltage		AC/DC
Control supply voltage frequency		
• 1 Rated value	Hz	50
• 2 Rated value	Hz	60
Control supply voltage 1		
• at DC		
— Initial rated value	V	150
— Final rated value	V	250
• at AC		

— at 50 Hz Initial rated value	V	127
— at 50 Hz Final rated value	V	240
— at 60 Hz Final rated value	V	240
— at 60 Hz Initial rated value	V	127

Installation/ mounting/ dimensions:

mounting position		any
Mounting type		clip-on
Width	mm	30
Height	mm	30
Depth	mm	14.5

Certificates/ approvals:

Certificate of suitability CE / UL / CSA / CCC

General Product Approval	Declaration of Conformity	Test Certificates	other	Railway
--------------------------	---------------------------	-------------------	-------	---------



[Typprüfbescheinigung/Werkszeugnis](#)

[Umweltbestätigung](#)

[Bestätigungen](#)

Further information

Information- and Downloadcenter (Catalogs, Brochures,...)

<http://www.siemens.com/industrial-controls/catalogs>

Industry Mall (Online ordering system)

<http://www.siemens.com/industrymall>

Cax online generator

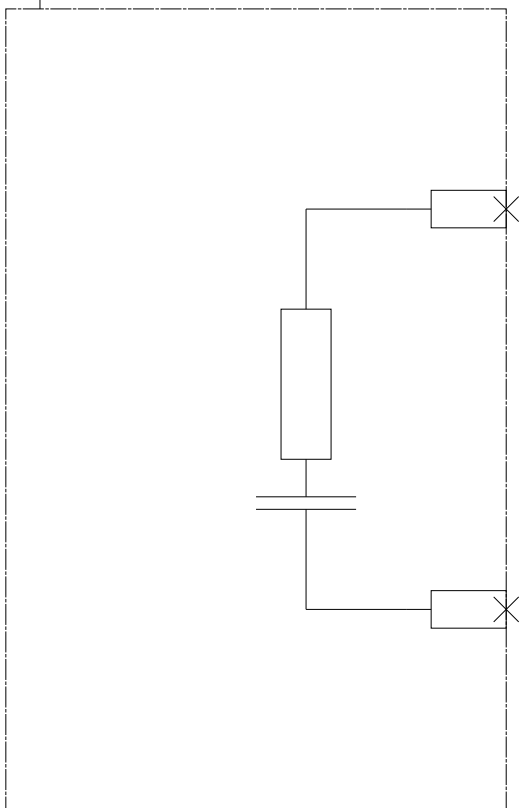
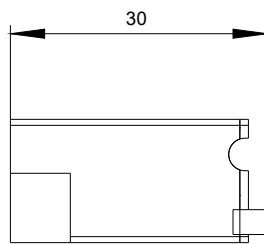
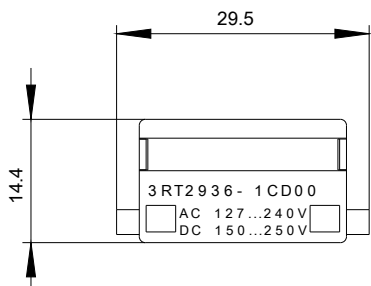
<http://support.automation.siemens.com/WW/CAXorder/default.aspx?lang=en&mlfb=3RT29361CD00>

Service&Support (Manuals, Certificates, Characteristics, FAQs,...)

<https://support.industry.siemens.com/cs/ww/en/ps/3RT29361CD00>

Image database (product images, 2D dimension drawings, 3D models, device circuit diagrams, EPLAN macros, ...)

http://www.automation.siemens.com/bilddb/cax_de.aspx?mlfb=3RT29361CD00&lang=en



last modified:

20.07.2015