

## HCI-TT 70 W/830 SUPER 4Y

POWERBALL HCI-TT SUPER 4Y | Metal halide lamps with ceramic technology for enclosed luminaires



### Areas of application

- Streets
- Outdoor lighting
- Industrial installations
- Exhibition halls and trade fairs
- Approved only for use in enclosed luminaires
- Outdoor applications only in suitable luminaires

### Product benefits

- Up to 15 % higher lumen maintenance factor compared to HCI-TT standard lamps
- Up to 30 % higher lum. efficacy for lamps  $\leq 100$  W (comp. to NAV-T Super 4Y/6Y)
- Good color rendering
- Operation in existing HPS installations as ignition voltage of IEC 60662 is met
- Energy savings of up to 70 % when replacing inefficient mercury vapor lamps (HQL)
- Dimmable on conventional control gears and electronic control gears
- Optimum energy efficiency on POWERTRONIC PTo 3DIM ECGs
- UV values significantly below the maximum permitted thresholds to IEC 61167 thanks to UV filter

### Product features

- White light due to POWERBALL ceramic technology
- Light color: warm white (830 WDL)
- Extended service lifetime: 4 years (at approx. 11 h/day)
- Very high luminous efficacy: up to 125 lm/W
- Lamp survival factor: 95 % after 16,000 hours burning time
- Average lifetime: up to 24,000 hours



## Product datasheet

- ErP compliant according to EU Directive 245/2009

# Product datasheet

## Technical data

### Electrical data

Nominal wattage	70.00 W
Rated wattage	75.00 W
Lamp current	1.00000 A
PFC capacitor at 50 Hz	12 $\mu$ F <sup>1)</sup>
Nominal voltage	95 V
Ignition voltage	1.8 / 5.0 kVp <sup>2)</sup>
Rated lamp efficacy (standard condition)	107 lm/W

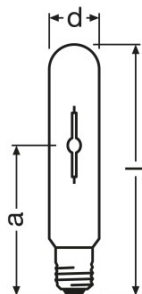
<sup>1)</sup> At rated voltage and  $\cos \phi \geq 0.9$

<sup>2)</sup> Minimum / Maximum

### Photometrical data

Rated luminous flux	8000 lm
Color rendering index Ra	$\geq 80$
Color temperature	3000 K
Light color	830
Rated LLMF at 2,000 h	0.92
Rated LLMF at 4,000 h	0.90
Rated LLMF at 6,000 h	0.89
Rated LLMF at 8,000 h	0.88
Rated LLMF at 12,000 h	0.85
Rated LLMF at 16,000 h	0.83
Rated LLMF at 20,000 h	0.75
UV protection	Yes

### Dimensions & weight



Diameter	32.0 mm
----------	---------

## Product datasheet

Length	156.0 mm
Light center length (LCL)	102.0 mm
Product weight	50.00 g

### Temperatures

Maximum permitted outer bulb temperature	350 °C
Maximum permitted base edge temperature	210 °C

### Lifespan

Rated lamp survival factor at 2,000 h	0.99
Rated lamp survival factor at 4,000 h	0.99
Rated lamp survival factor at 6,000 h	0.98
Rated lamp survival factor at 8,000 h	0.97
Rated lamp survival factor at 12,000 h	0.97
Rated lamp survival factor at 16,000 h	0.95
Rated lamp survival factor at 20,000 h	0.78
Lifespan B50	24000 h
Lifespan B10	18000 h
Lifespan B5	16000 h
Operation mode LLMF/LSF	50 Hz

### Additional product data

New article	NEW
Base (standard designation)	E27
Design / version	Clear
System guarantee level	3 (2/5)
Lamp mercury content	7.0 mg

### Capabilities

Dimmable	Yes
Burning position	Any
Enclosed luminaire required	Yes

### Certificates & standards

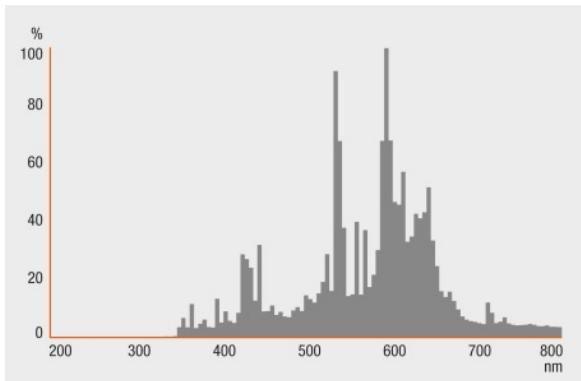
Energy efficiency class	A+
Energy consumption	83 kWh/1000h

### Country specific categorizations

ILCOS	MT/UB-70/830-H/E/SL-E27-32/155
-------	--------------------------------

## Light Distribution

---



## Spectral power distribution

---

### System guarantee

For the vast majority of our lamps we are offering an extended system guarantee in conjunction with OSRAM POWERTRONIC control gear.

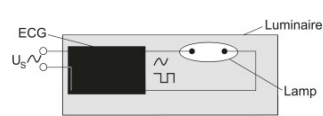
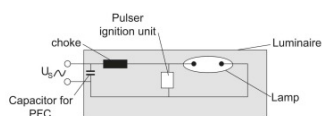
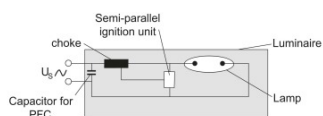


## Guarantee

# Product datasheet

## Safety advice

Where possible, use a timer igniter (switch-off time of at least 15 minutes). Otherwise, switch off the luminaire for at least 15 minutes if a brief interruption has occurred to the mains voltage supply.



Circuit diagram

Circuit diagram

Circuit diagram

## Logistical Data

Product code	Product description	Packaging unit (Pieces/Unit)	Dimensions (length x width x height)	Volume	Gross weight
4052899044715	HCI-TT 70 W/830 SUPER 4Y	Shipping carton box 12	192 mm x 153 mm x 212 mm	6.23 dm <sup>3</sup>	911.00 g

The mentioned product code describes the smallest quantity unit which can be ordered. One shipping unit can contain one or more single products. When placing an order, for the quantity please enter single or multiples of a shipping unit.

## References / Links

For more information on the system guarantee and the terms and conditions of the guarantee visit

- ▶ [www.osram.com/system-guarantee](http://www.osram.com/system-guarantee)

## Disclaimer

Subject to change without notice. Errors and omission excepted. Always make sure to use the most recent release.