

## Isolating transformer TT3 30-4-4



### Advantages

Safe galvanic isolation
Patented assembly technology to lower heat losses
Very good corrosion protection and low noise thanks to BLOCKIMPEX vacuum impregnation
Secondary side $\pm 5\%$ tapings for voltage adjustment
Fixed, contact protected screw connection terminals complying with UVV BGV A3
Multifunctional fixing rails with 12 oval slots
Enlarged fixing rail for easy installation from above
Integrated crane eyes

### Applications

Isolating transformer for the safe electrical isolation of the input and output sides. The transformer may be used to set up protective separation as a protective measure in accordance with VDE 0100.

### Standards

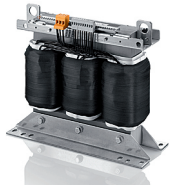


Isolating transformer  
to: VDE 0570 Part2-4, DIN EN 61558-2-4, EN 61558-2-4, IEC 61558-2-4, UL 5085-1/-2, CSA 22.2 No.66

### Approvals



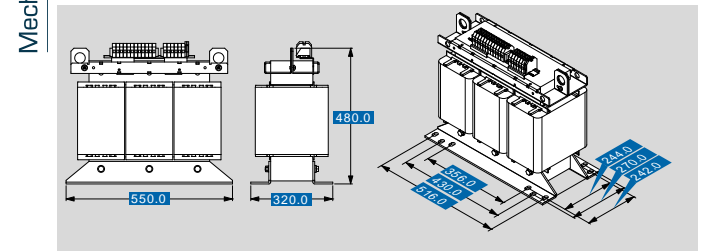
UL 5085-1/-2, CSA 22.2 No.66



# Isolating transformer TT3 30-4-4

Type		TT3 30-4-4
Electrical data	Input	
	Rated input Voltage	3 x 400 Vac
	Rated frequency	50 - 60 Hz
	Output	
	Rated output voltage	3 x 400 Vac
	Rated Power	30000 VA
	Rated current	3 x 45.7 Aac (3 x 380 Vac) 3 x 43.3 Aac (3 x 400 Vac) 3 x 41.3 Aac (3 x 420 Vac)
	Short circuit voltage	1.7 %
	Power loss	770.0 W
	Tappings Output (±)	±5 %
	Vector group	Dyn 5
	Efficiency	97.5 %
	Approvals	
	Approvals	cURus
	Environment	
Ambient temperature max.	50 °C	
Safety and protection		
Type	open type	
Class of Insulation System	VDE=F, UL=class 155	
Protection index	IP 00	
Safety class (prepared)	I	
Short circuit strength	non-short-circuit proof	
Order numbers		
<b>Order Number</b>	<b>TT3 30-4-4</b>	

Type		TT3 30-4-4
Terminal and mounting	Terminals	Screw-type terminal
	Fixing method	Fixing rail
Measures and weights	Fixing screws	M12
	Weight	230.00 kg
Core type		3UI 240/170



Subjects to change.