

TEST/CHARACTERISTICS	MIL-C-39012 A	VALUES/REMARKS
----------------------	---------------	----------------

### ELECTRICAL CHARACTERISTICS

Impedance		50 Ω			
Frequency range		DC-4 GHz			
V.S.W.R. (typ.)	Frequency	3-14	1 GHz	2.5 GHz	4 GHz
Straight models	cable group:	.085"	1.12	1.22	1.33
			2	1.10	1.22
Right angle models		.085"	1.12	1.22	1.35
			2	1.10	1.18
Insertion loss (typ.)	cable group:	.085"	0.05	0.07	0.15
			2	0.05	0.10
Straight models		.085"	0.05	0.05	0.05
			2	0.05	0.07
RF leakage		3-26	-55 dB min from 2 to 3 GHz		
Insulation resistance		3-11	1000 MΩ min		
Contact resistance		3-16	Initial	After test	
	center contact (mΩ)		6	8	
	outer contact (mΩ)		1	1.5	
Working voltage	Cable group		2/50	2.6/50	
	at sea level		250 V rms	335 V rms	
	at 70000 ft (21000 m)		60 V rms	85 V rms	
Dielectric withstanding voltage		3-17	2/50	2.6/50	
	Cable group		750 V rms	1000 V rms	
	at sea level		185 V rms	250 V rms	
	at 70000 ft (21000 m)				
RF withstanding voltage (5 MHz sine wave)		3-23	2/50	2.6/50	
	Cable group		500 V rms	700 V rms	
	at sea level				

### MECHANICAL CHARACTERISTICS

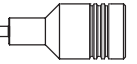
Durability		3-15	500 matings		
Mating / unmating		3-5-1	axial force : 62 N max (14 Lbf)		
Cabling retention force	cable group:	3-24	58 N (13 Lbf)		
	2/50		110 N (25 Lbf)		
	2.6/50				
Center contact retention			Axial : 10 N (2.25 Lbf)		

### ENVIRONMENTAL CHARACTERISTICS

Temperature range	standard models		-65° C / + 165° C		
	hermetic sealed models		-65° C / +165° C		
	models for semi-rigid cables		-65° C / +105° C		
Combined climate tests			MIL-STD-202. method 102. condition C		
Thermal shock		3-20	MIL-STD-202. method 107. condition B		
High temperature endurance			MIL-STD-202. method 108		
Corrosion (salt spray)		3-13	MIL-STD-202. method 101. condition B, 5%		

All dimensions are given in millimeters

Standard packaging : 100 pieces (Same part number). For unit packaging, add "W" after the P/N.



### ENVIRONMENTAL CHARACTERISTICS

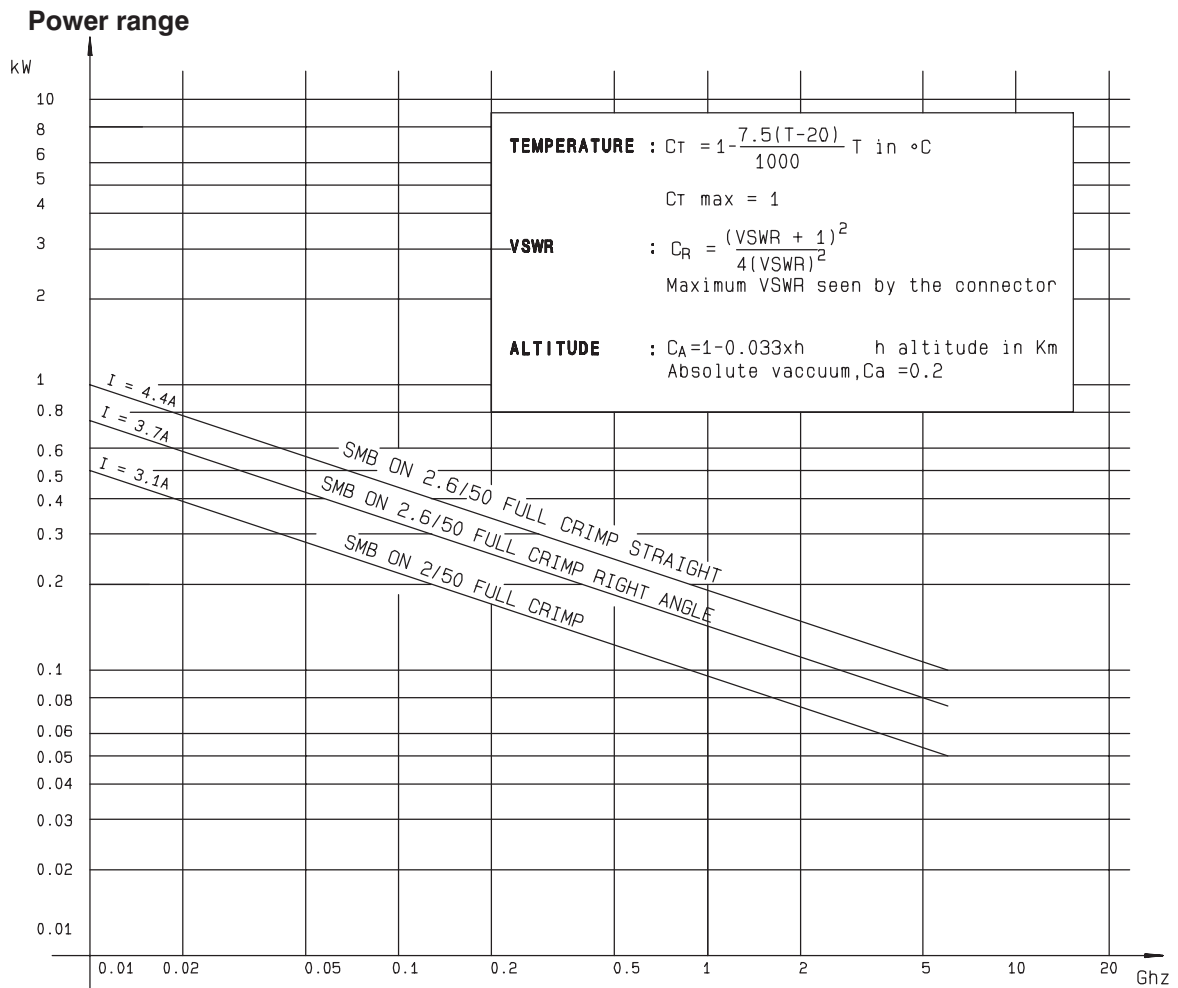
Vibrations	3-18	MIL-STD-202. method 204. condition B, 15g
Shocks	3-19	MIL-STD-202. method 213. condition B, 75g
Low pressure	3-22	MIL-STD-202. method 105. condition C
Hermetic seal		applied vacuum $10^{-6}$ mm of Hg (Torr) leakage rate $< 10^{-6}$ atm/cm <sup>3</sup> /s

### MATERIALS

Body and center pin contact		half hard brass as per QQ-B-626
Center socket contact		beryllium copper as per QQ-C-530
Ferrules		brass
Insulators		PTFE teflon
Gaskets		silicone elastomer

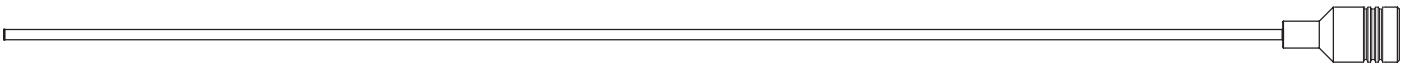
### PLATING

Body		gold or nickel
Center contacts		gold



All dimensions are given in millimeters

Standard packaging : 100 pieces (Same part number). For unit packaging, add "W" after the P/N.



## STRAIGHT JACKS CRIMP TYPE FOR FLEXIBLE CABLES

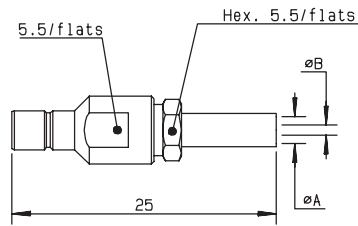


Fig. 1

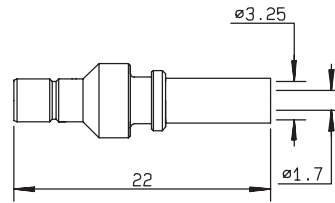


Fig. 2

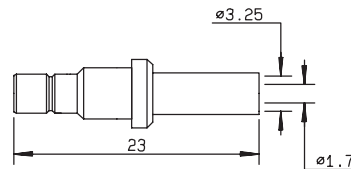
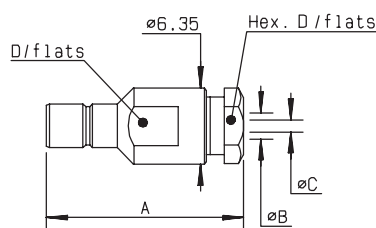


Fig. 3

cable	part number	fig.	dimensions		captive center contact	assembly	finish	note
			A	B				
2/50/S	R114 237 000	1	2.55	0.95	yes	M03	Gold	
2.6/50+75/S	R114 238 000	2			yes	M10	Gold	full crimp
2.6/50+75/S	R114 238 120	2			yes	M10	Nickel	full crimp
2.6/50+75/S	R114 239 000	1	3.25	1.7	yes	M03	Gold	
2.6/50/D	R114 245 020●	3			yes	M10	Nickel	full crimp

## STRAIGHT JACKS CLAMP TYPE FOR FLEXIBLE CABLES

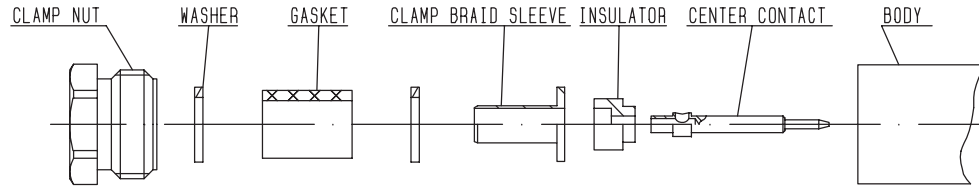


cable	part number	dimensions				captive center contact	assembly	finish	note
		A	B	C	D				
2/50/S	R114 203 000	21	2.2	1	5	yes	M02	Gold	
2/50/S	R114 203 133*●	16.5	2.2	1	5.5	yes	M01	Gold	conical braid clamp
2.6/50+75/S	R114 205 000	21	3	1.7	5	yes	M02	Gold	
2.6/50+75/S	R114 205 133	16.5	3	1.7	5.5	yes	M01	Gold	conical braid clamp

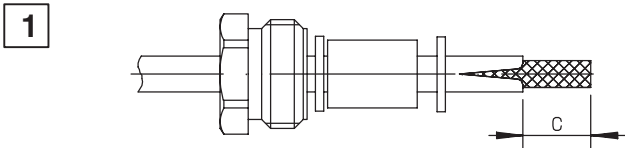
● upon request

\* packaging: unit

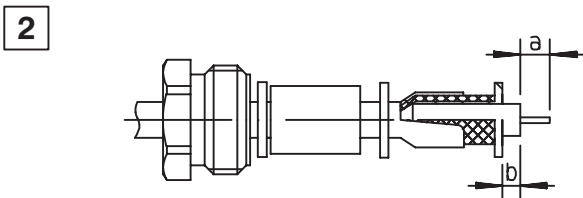
## M 02



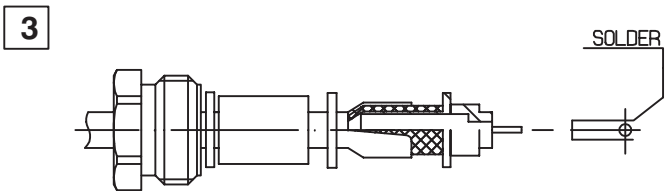
P/N	STRIPPING DIM.			RECOMMENDED COUPLING TORQUE
	a	b	c	
R114 003 000 R114 005 000	2.5	1.2	4.5	40 N.cm
R114 009 000				150 N.cm
R114 203 000 R114 205 000 R114 303 000 R114 305 000				40 N.cm



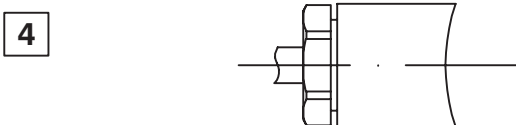
- 1.1 Slide the clamp nut, first washer, gasket, and the second washer onto the cable.
- 1.2 Strip the cable.
- 1.3 Cut 2 slots in the jacket if necessary.



- 2.1 Slide the clamp braid sleeve between the cable dielectric and braid.
- 2.2 Cut the braid flush with the clamp braid sleeve.



- 3.1 Slide the first insulator onto the cable.
- 3.2 Solder the center contact onto the cable center conductor.
- 3.3 Mount the second insulator.



- 4.1 Screw the sub-assembly into the conductor body.