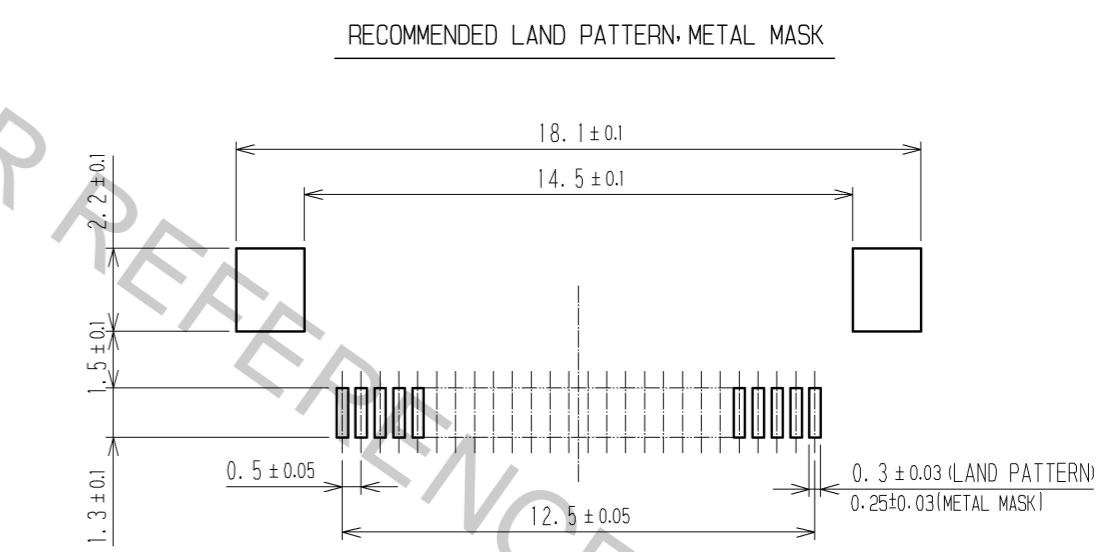
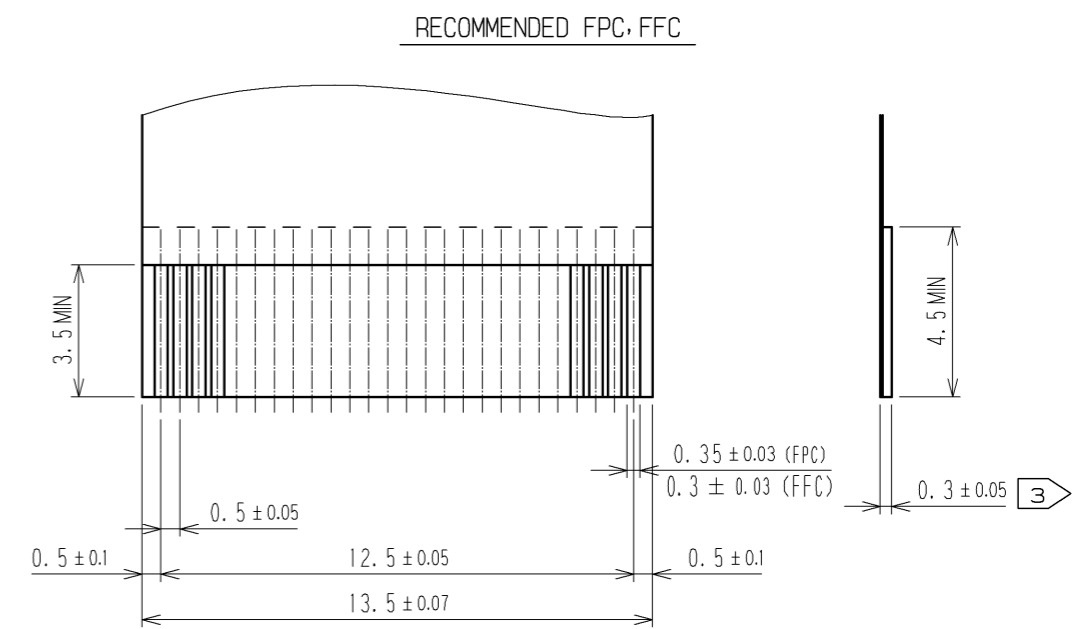
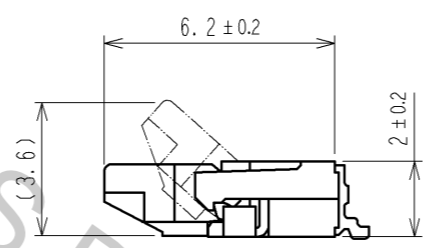
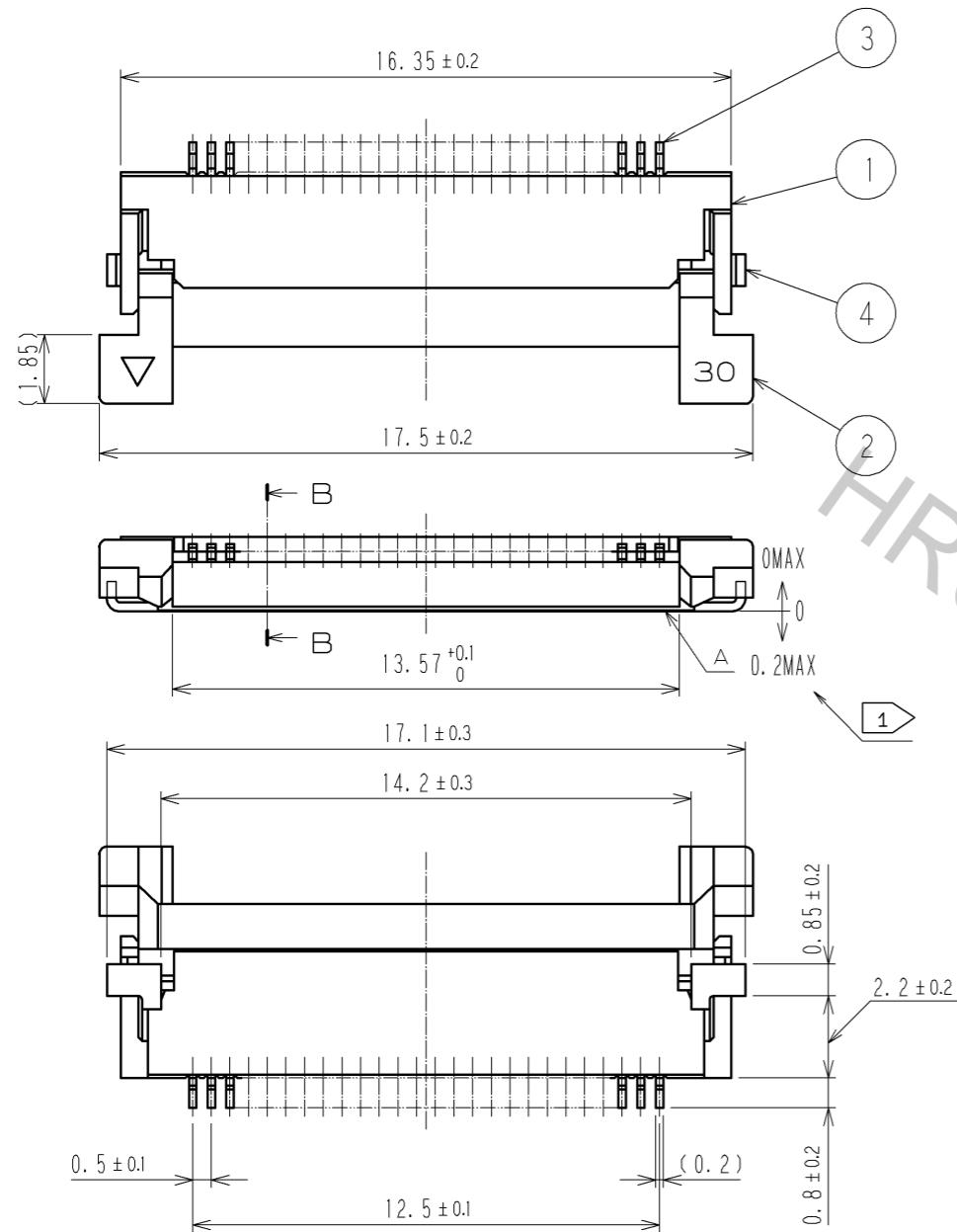
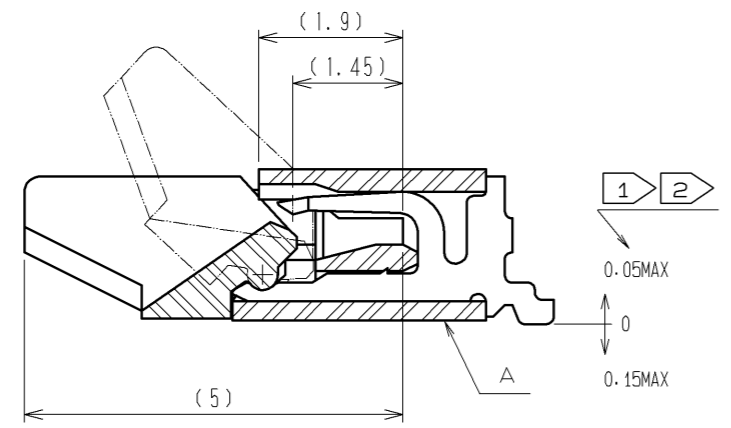


Nov.1.2016 Copyright 2016 HIROSE ELECTRIC CO., LTD. All Rights Reserved.



B-B (10:1)



- NOTE
- 1 REFERENCE IS A.
 - 2 LEAD CO-PLANARITY SHALL BE 0.1MAX.
 - 3 THICKNESS OF SUPPORTING TAPE SHALL BE 0.188(7.5mil)MIN.

4	BRASS	TIN PLATING 1#MIN-OVER NICKEL 1#MIN	8	(CONNECTOR)	
3	PHOSPHOR BRONZE	GOLD PLATING 0.05#MIN-OVER NICKEL 1#MIN	7	POLYSTYRENE	
2	PPS	(DEEP BROWN) UL94V-0	6	POLYESTER	
1	POLYAMIDE	(BEIGE) UL94V-0	5	POLYSTYRENE	
NO.	MATERIAL	FINISH, REMARKS	NO.	MATERIAL	FINISH, REMARKS
UNITS	mm	SCALE	5:1	COUNT	△
APPROVED: RI. TAKAYASU		07.10.03	DRAWING NO.		EDC3-152352-51
CHECKED: HS. SAKAMOTO		07.10.03	PART NO.		FH12A-26S-0.5SH(55)
DESIGNED: MK. YASUMI		07.10.03	CODE NO.		CL586-0663-5-55
DRAWN: MK. YASUMI		07.10.03			△ 1/2

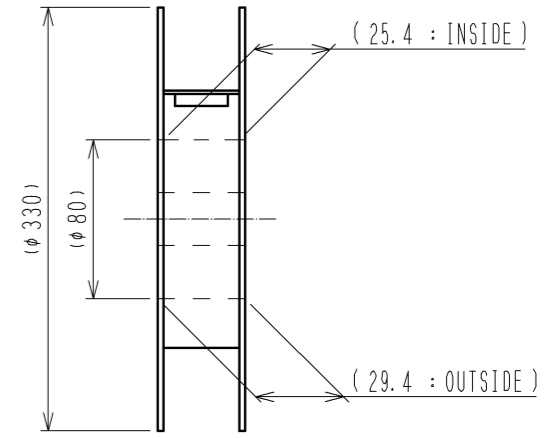
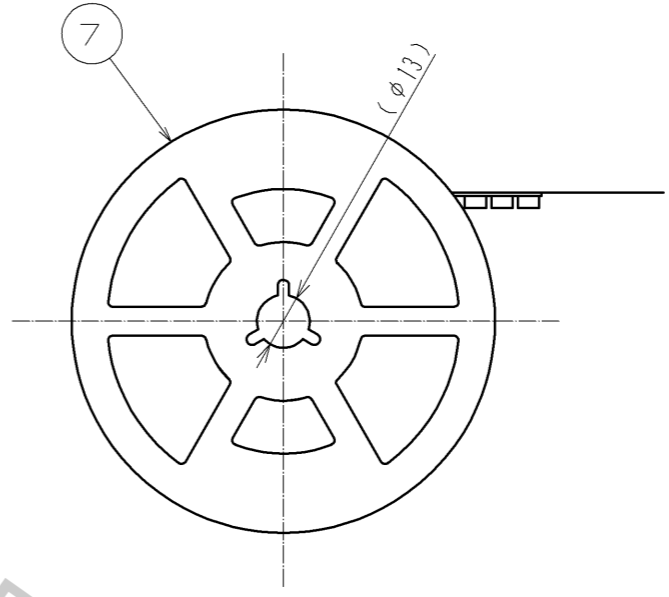
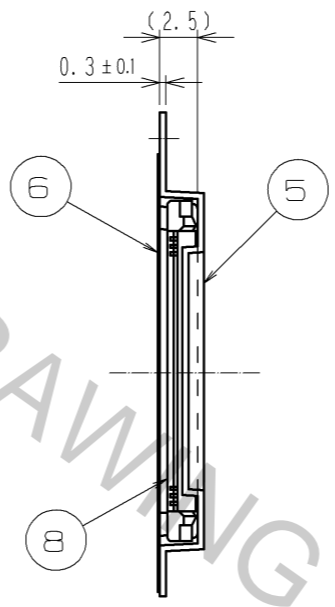
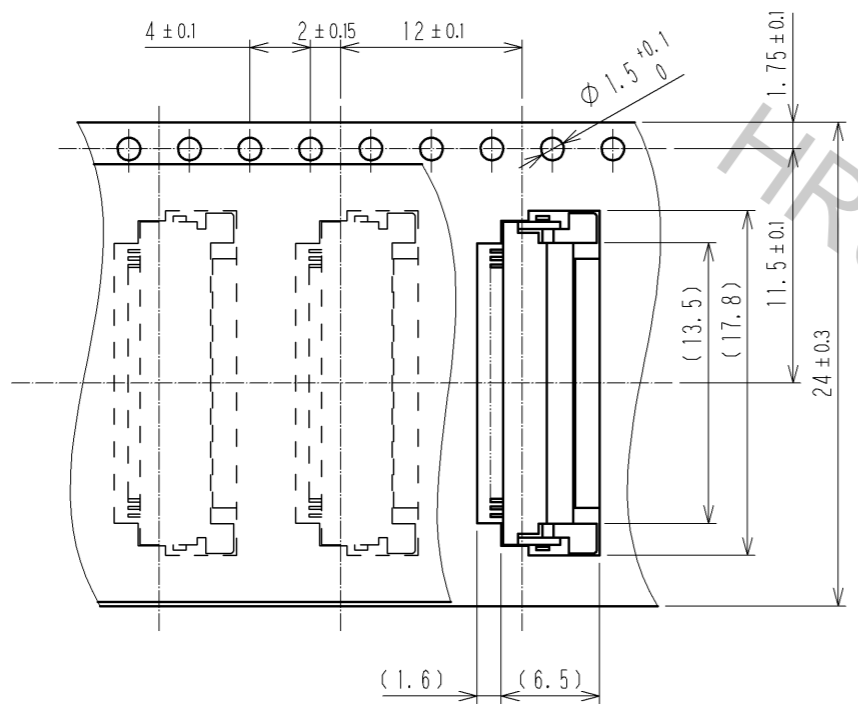
Nov.1.2016 Copyright 2016 HIROSE ELECTRIC CO., LTD. All Rights Reserved.

1 2 3 4 5 6 7 8

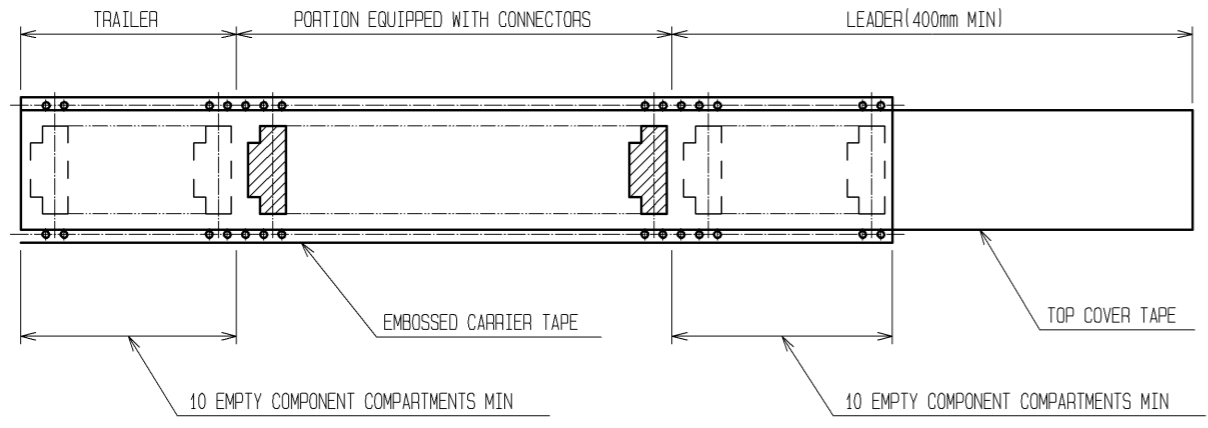
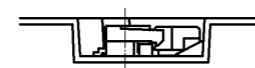
A
B
C
D
E
F

EMBOSSED CARRIER TAPE DIMENSION(2:1)

REEL DIMENSION(SHOW AS BELOW)
(FREE)



→
DIRECTION OF UNREELING



NOTE 4 THE DIMENSION IN PARENTHESES ARE FOR REFERENCE.
5 1REEL:2000 CONNECTORS.

<DRAWING FOR PACKING>

HRS	DRAWING NO.	EDC3-152352-51
	PART NO.	FH12A-26S-0.5SH(55)
	CODE NO.	CL586-0663-5-55
		△ 2/2