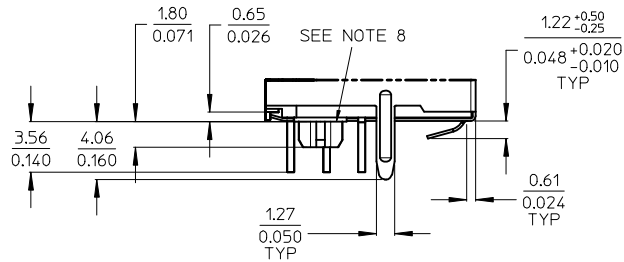
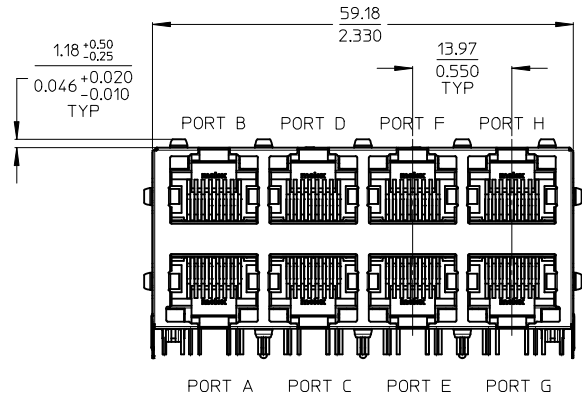
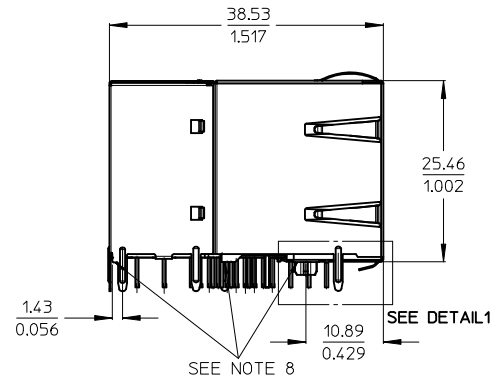
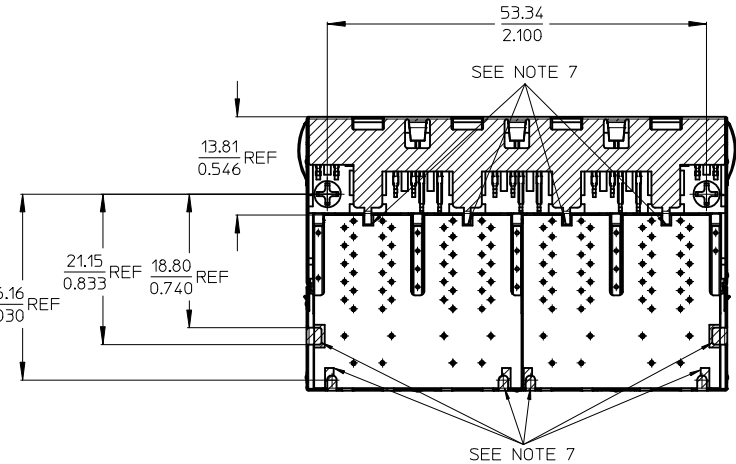


**GIGABIT 8 PORT MAGNETIC JACK WITH LED'S
AND INTEGRATED POWER OVER ETHERNET TRANSFORMERS
ACCORDING TO IEEE802.3at FOR PSE APPLICATIONS**



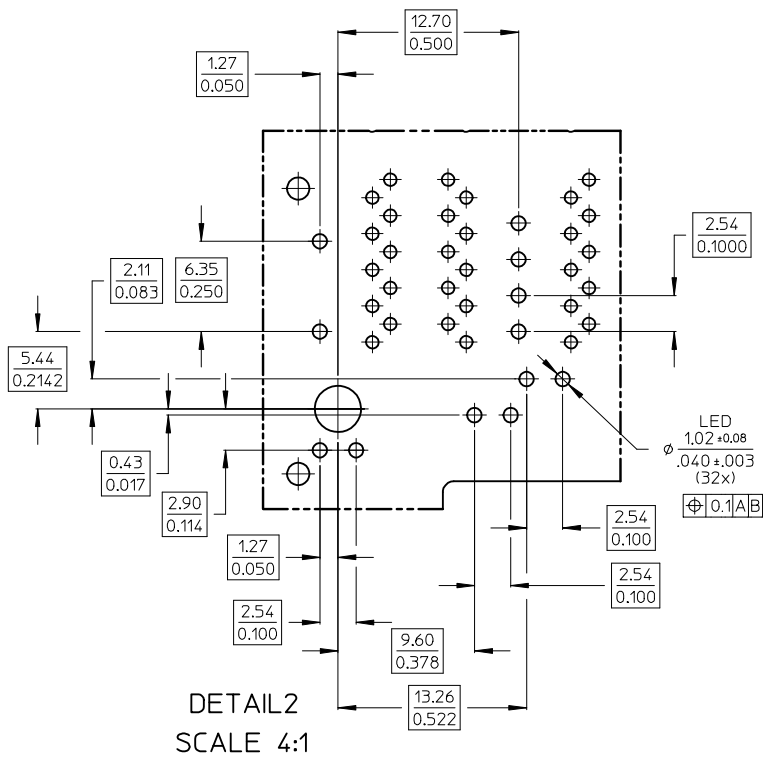
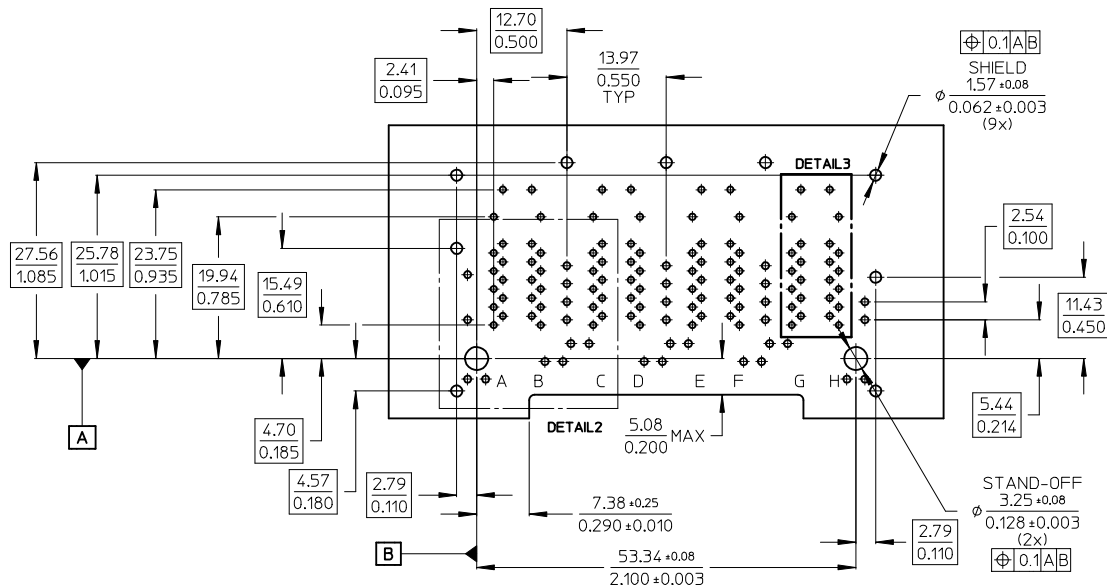
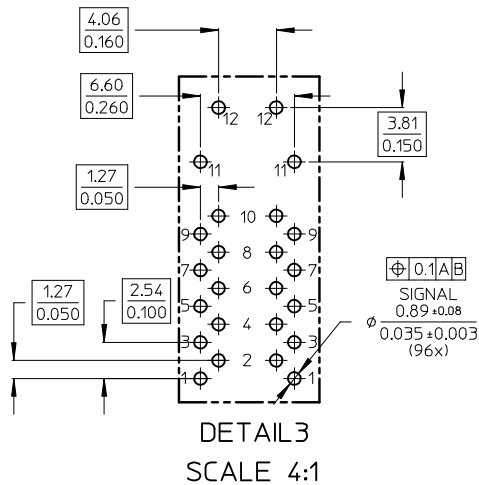
**DETAIL1
SCALE 4:1**



NOTES:

- 1 - SHIELD MATERIAL: BRASS, PLATING: NICKEL PRE-PLATING
- 2 - PLASTIC MATERIAL: POLYESTER (PBT) BLACK, 30%GR, UL 94V-0
- 3 - TERMINALS MATERIAL: COPPER ALLOY
-BASE FINISH: NICKEL
-CONTACT SURFACE FINISH GOLD OR GOLD FLASH OVER PALLADIUM NICKEL
EXCEEDS PRODUCT REQUIREMENTS BASED ON PS-85732-001
- 4 - MATING INTERFACE ACCORDING TO IEC 60603-7
- 5 - PRODUCT SPECIFICATION: PS-85732-001
- 6 - PACKAGING SPECIFICATION: PK-85735-001
- 7 - TRACES WITHOUT INSULATION NOT ALLOWED IN THE DASHED AREAS & LATCHES
(TO AVOID SHORTS TO SHIELD)
- 8 - STAND OFF TO SYSTEM BOARD
- 9 - MISSING MAGNETICS AND LED INFORMATION'S SEE PS-85732-001

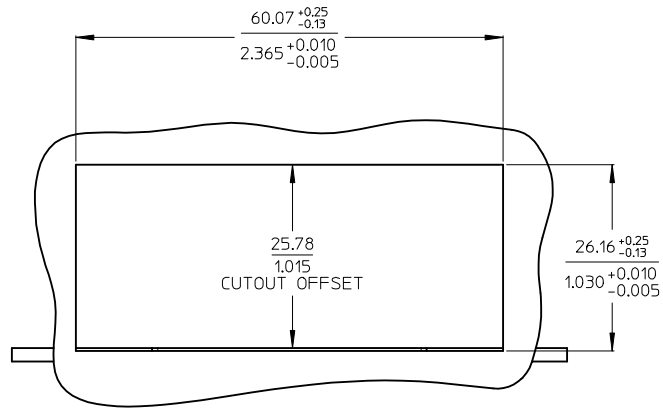
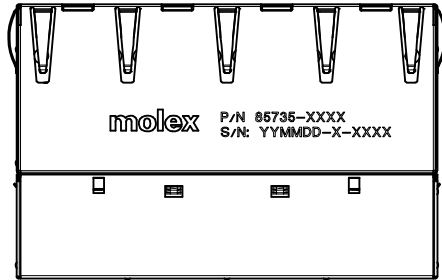
ENTER DESCRIPTION EC NO: IFC2012-0066 DRW:MMANGARUDOV 2011/12/14 CHKD:JBADER 2012/02/22 APPR:SSTEINKE 2012/12/07	QUALITY SYMBOLS	GENERAL TOLERANCES (UNLESS SPECIFIED)	DIMENSION STYLE	SCALE	DESIGN UNITS	THIRD ANGLE PROJECTION	
	$\nabla=0$ $\nabla=0$	mm INCH 4 PLACES ± --- ± --- 3 PLACES ± --- ± --- 2 PLACES ± 0.25 ± --- 1 PLACE ± 0.5 ± --- ANGULAR ± .5 °	MM ONLY	2:1	METRIC		
		DRAFT WHERE APPLICABLE MUST REMAIN WITHIN DIMENSIONS	DRAWN BY: MMANGARUDOV CHECKED BY: JBADER APPROVED BY: SSTEINKE DATE: 2011/12/14 DATE: 2011/12/22 DATE: 2012/12/07	TITLE	GIGABIT MAGNETIC JACK POE PLUS ENABLED 2X4 LED		
			MATERIAL NO. SEE SHEET 3	MOLEX INCORPORATED			SHEET NO. 1 OF 4



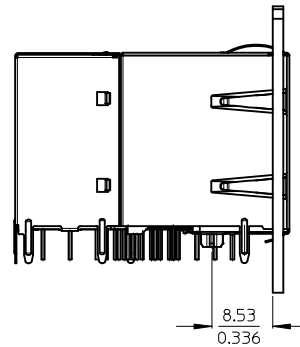
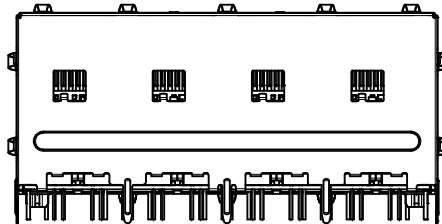
ENTER DESCRIPTION EC NO: IPG2012-0066 DRWN:MMANGARDOV 2011/12/14 CHKD:JBADER 2012/02/22 APPR:SSTEINKE 2012/12/07 A	QUALITY SYMBOLS ▽=0 ▽=0	GENERAL TOLERANCES (UNLESS SPECIFIED)		DIMENSION STYLE MM ONLY		SCALE 2:1	DESIGN UNITS METRIC	THIRD ANGLE PROJECTION	
		4 PLACES ± --- ± --- 3 PLACES ± --- ± --- 2 PLACES ± 0.25 ± --- 1 PLACE ± 0.5 ± --- ANGULAR ± .5 °	mmm INCH ± --- ± --- ± 0.25 ± --- ± 0.5 ± ---	DRAWN BY MMANGARDOV	DATE 2011/12/14	TITLE GIGABIT MAGNETIC JACK POE PLUS ENABLED 2X4 LED			
DRAFT WHERE APPLICABLE MUST REMAIN WITHIN DIMENSIONS	SEE SHEET 3	APPROVED BY SSTEINKE		DATE 2012/12/07		MOLEX INCORPORATED		DOCUMENT NO. SD-85735-101	
		MATERIAL NO.		SHEET NO. 2 OF 4					

PRINTING
 LED VERSION
 P/N: 85735-XXXX
 S/N: YYMMDD-CM-CONSECUTIVE NUMBER

PRINTING



SUGGESTED PANEL CUT OUT



PART NUMBER	UPPER & LOWER LED LEFT		UPPER & LOWER LED RIGHT	
	COLOUR 1	GREEN	COLOUR 1	GREEN
85735-1001	COLOUR 2	-	COLOUR 2	-
	COLOUR 1	GREEN	COLOUR 1	ORANGE
85735-1002	COLOUR 2	-	COLOUR 2	-
	COLOUR 1	GREEN	COLOUR 1	GREEN
85735-1003	COLOUR 2	ORANGE	COLOUR 2	-
	COLOUR 1	GREEN	COLOUR 1	GREEN
85735-1004	COLOUR 2	ORANGE	COLOUR 2	ORANGE
	COLOUR 1	GREEN	COLOUR 1	YELLOW
85735-1006	COLOUR 2	-	COLOUR 2	-
	COLOUR 1	GREEN	COLOUR 1	GREEN
85735-1007	COLOUR 2	YELLOW	COLOUR 2	-
	COLOUR 1	GREEN	COLOUR 1	GREEN
85735-1008	COLOUR 2	YELLOW	COLOUR 2	YELLOW
	COLOUR 1	YELLOW	COLOUR 1	GREEN
85735-1012	COLOUR 2	GREEN	COLOUR 2	-
	COLOUR 1	YELLOW	COLOUR 1	YELLOW
85735-1013	COLOUR 2	GREEN	COLOUR 2	GREEN
	COLOUR 1	YELLOW	COLOUR 1	YELLOW
85735-1014	COLOUR 2	-	COLOUR 2	-
	COLOUR 1	YELLOW	COLOUR 1	GREEN

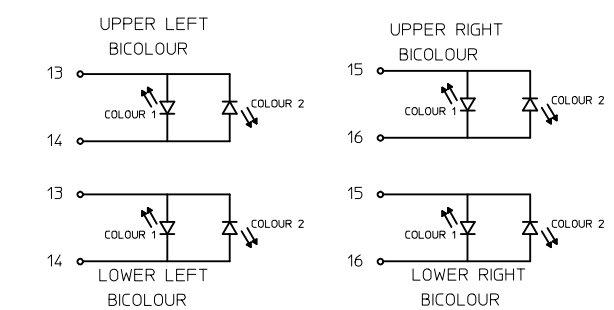
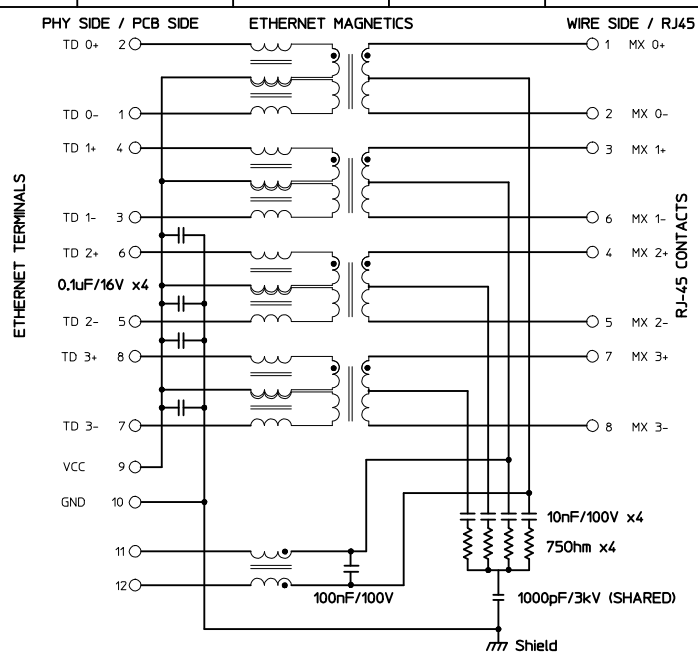
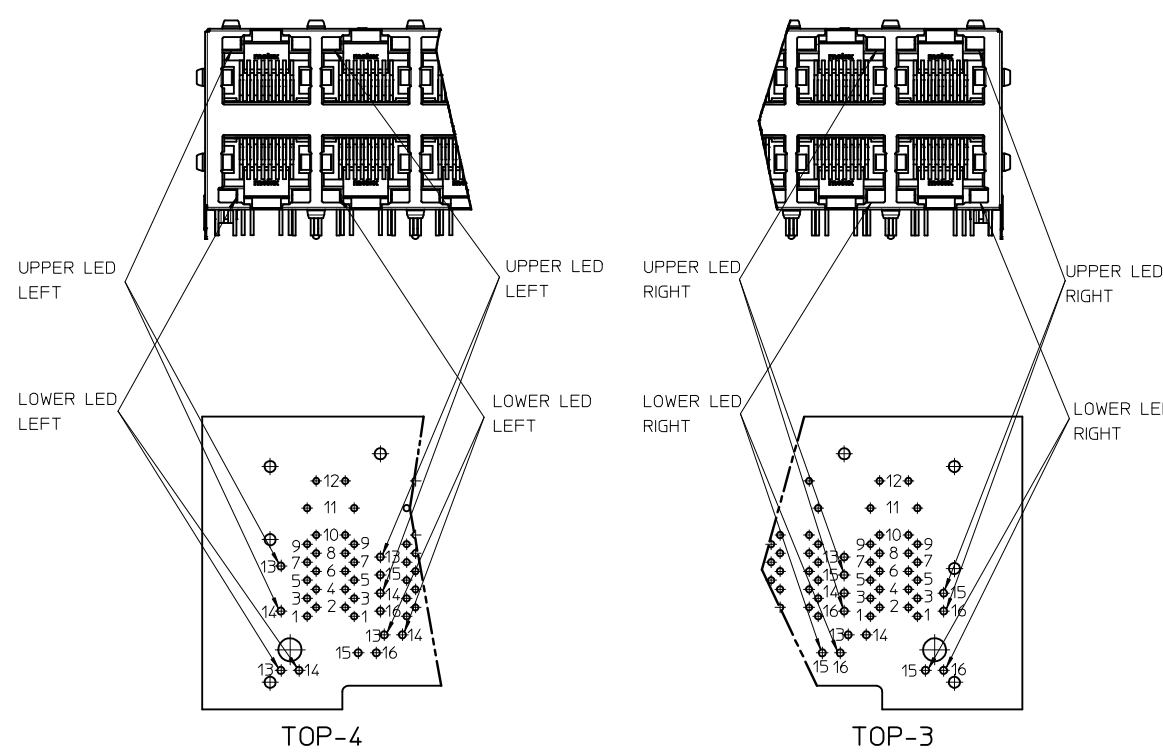
ADDITIONAL LED COLOURS AND CONFIGURATIONS ARE AVAILABLE ON REQUEST

ENTER DESCRIPTION EC NO: IFC2012-0066 DRW:MMANGARUDOV 2011/12/14 CHKD:JBADER 2012/02/22 APPR:SSTEINKE 2012/12/07	QUALITY SYMBOLS ▽=0 ▽=0	GENERAL TOLERANCES (UNLESS SPECIFIED)		DIMENSION STYLE MM ONLY		SCALE 2:1	DESIGN UNITS METRIC	THIRD ANGLE PROJECTION	
		4 PLACES ± --- ± ---	mm INCH	DRAWN BY MMANGARUDOV	DATE 2011/12/14	TITLE GIGABIT MAGNETIC JACK POE PLUS ENABLED 2X4 LED			
		3 PLACES ± --- ± ---	± 0.25 ± ---	CHECKED BY JBADER	DATE 2011/12/22	MOLEX INCORPORATED			
		2 PLACES ± 0.5 ± ---	± 0.5 ± ---	APPROVED BY SSTEINKE	DATE 2012/12/07	MATERIAL NO.	DOCUMENT NO.	SHEET NO. 3 OF 4	

DRAFT WHERE APPLICABLE MUST REMAIN WITHIN DIMENSIONS

SEE BOM

THIS DRAWING CONTAINS INFORMATION THAT IS PROPRIETARY TO MOLEX INCORPORATED AND SHOULD NOT BE USED WITHOUT WRITTEN PERMISSION



UPPER POSITION	LOWER POSITION	LEFT COLOUR	LED COLOUR
13	13	+	-
14	14	-	+

UPPER POSITION	LOWER POSITION	RIGHT COLOUR	LED COLOUR
15	15	+	-
16	16	-	+

POWER-SUPPLY POLARITY DEFINITION
TO ACHIEVE PoE POWER ASSIGNMENT
ACCORDING IEEE 802.3at
ALTERNATIVE A:

	MDI-X	MDI
PIN 11	Vc +	Vc -
PIN 12	Vc -	Vc +

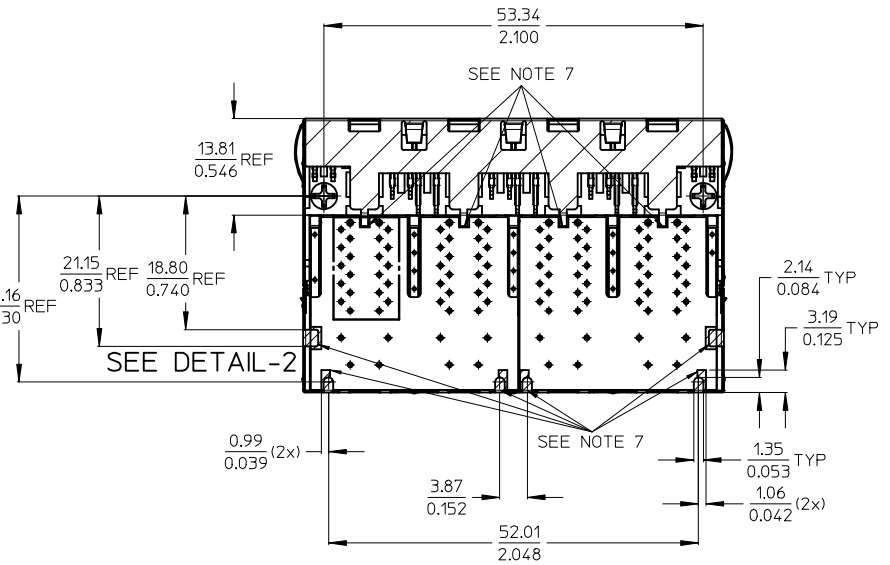
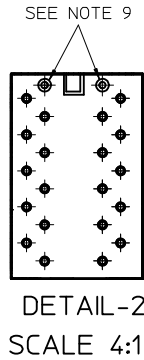
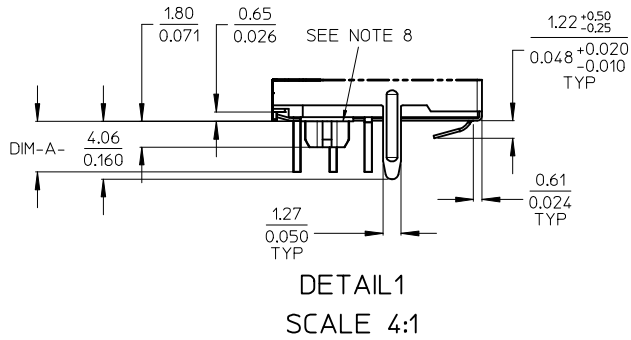
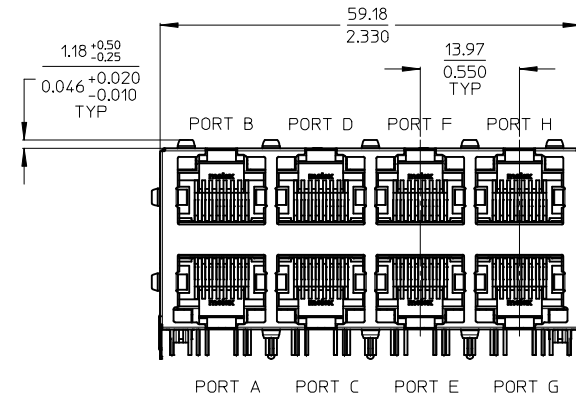
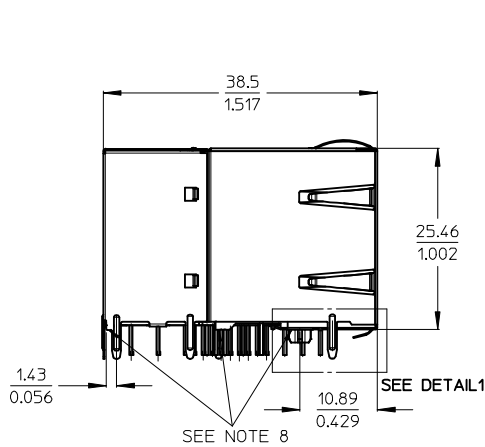
PIN	ETHERNET MAGNETICS
10	GND
9	Vcc
8	TD 3+
7	TD 3-
6	TD 2+
5	TD 2-
4	TD 1+
3	TD 1-
2	TD 0+
1	TD 0-
11	PWR 3-6
12	PWR 1-2

ENTER DESCRIPTION EC NO: IFC2012-0066 DRWN:MMANGARDOV 2011/12/14 CHKD:JBADER 2012/02/22 APPR:SSTEINKE 2012/12/07	QUALITY SYMBOLS ▽=0 ▽=0	GENERAL TOLERANCES (UNLESS SPECIFIED)		DIMENSION STYLE MM ONLY	SCALE 2:1	DESIGN UNITS METRIC	THIRD ANGLE PROJECTION
		4 PLACES ± --- ± --- 3 PLACES ± --- ± --- 2 PLACES ± 0.25 ± --- 1 PLACE ± 0.5 ± --- ANGULAR ± .5 °	mm INCH DRAWN BY DATE MMANGARDOV 2011/12/14 CHECKED BY DATE JBADER 2011/12/22 APPROVED BY DATE SSTEINKE 2012/12/07	TITLE GIGABIT MAGNETIC JACK POE PLUS ENABLED 2X4 LED		MATERIAL NO. SEE SHEET 3	
DRAFT WHERE APPLICABLE MUST REMAIN WITHIN DIMENSIONS		THIS DRAWING CONTAINS INFORMATION THAT IS PROPRIETARY TO MOLEX INCORPORATED AND SHOULD NOT BE USED WITHOUT WRITTEN PERMISSION					

**GIGABIT 8 PORT MAGNETIC JACK WITH LED'S
AND INTEGRATED POWER OVER ETHERNET TRANSFORMERS
WITHOUT POWER LINE CHOKE
ACCORDING TO IEEE802.3at FOR PSE APPLICATIONS**

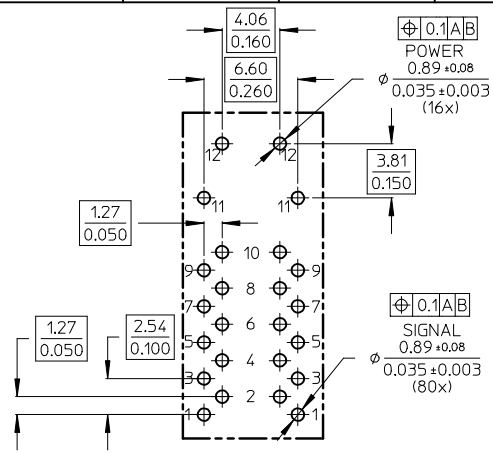
PART NUMBER	UPPER & LOWER LED LEFT		UPPER & LOWER LED RIGHT		PIN LENGHT DIM-A-
85735-2001	COLOUR 1	GREEN	COLOUR 1	GREEN	3.56 MM
	COLOUR 2	—	COLOUR 2	—	0.14 INCH
85735-2004	COLOUR 1	GREEN	COLOUR 1	GREEN	3.56 MM
	COLOUR 2	ORANGE	COLOUR 2	ORANGE	0.14 INCH

ADDITIONAL LED COLOURS ARE CONFIGURATIONS AVAILABLE ON REQUEST

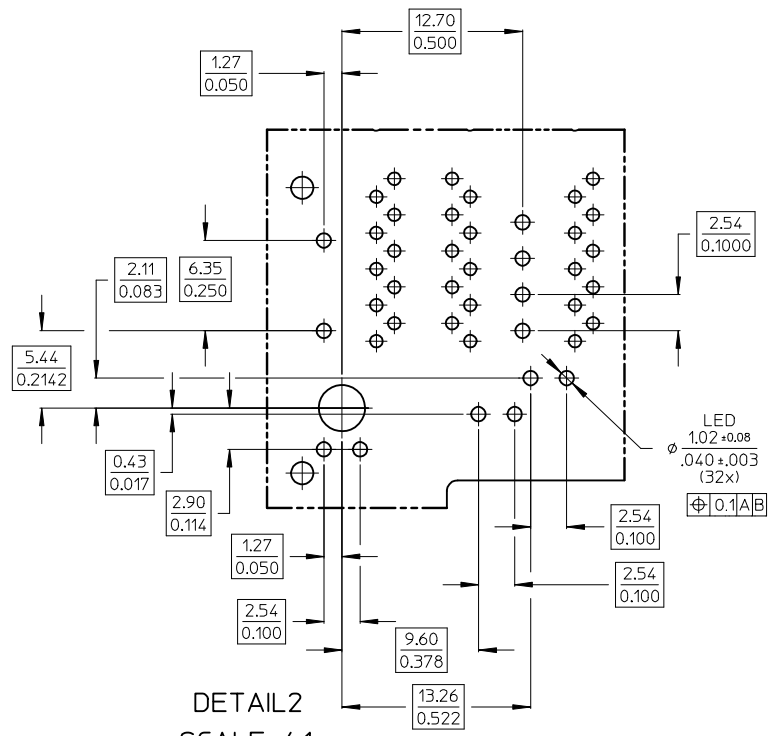
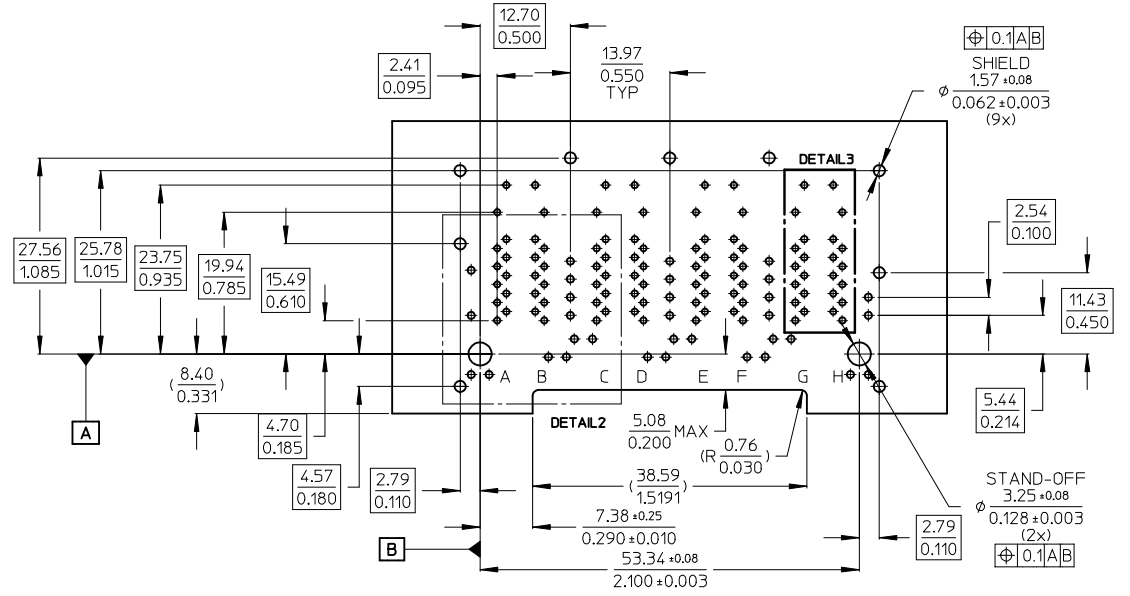


- NOTES:
- 1 - SHIELD MATERIAL: BRASS; PLATING: NICKEL PRE-PLATING
 - 2 - PLASTIC MATERIAL: POLYESTER (PBT) BLACK, 30%GR, UL 94V-0
 - 3 - TERMINALS MATERIAL: COPPER ALLOY
RJ45 CONTACT PLATING: 0.76 MICROMETER GOLD OVER 1.9 MICROMETER NICKEL
SOLDER TERMINALS: 3 MICROMETER TIN
 - 4 - MATING INTERFACE ACCORDING TO IEC 60603-7
 - 5 - PRODUCT SPECIFICATION: PS-85732-001
 - 6 - PACKAGING SPECIFICATION: PK-85735-001
 - 7 - TRACES WITHOUT INSULATION NOT ALLOWED IN THE DASHED AREAS & LATCHES (TO AVOID SHORTS TO SHIELD)
 - 8 - STAND OFF TO SYSTEM BOARD
 - 9 - STUBBED PINS -> AVOID TO ROUTE TRACES OR TO PLACE ANY VIAS OR PADS BELOW THESE PINS
 - 10 - FOR MAGNETICS AND LED INFORMATION SEE SPEC PS-85732-001

ENTER DESCRIPTION EC NO: IFC2014-0764 DRWN: JBADER 2013/07/02 CHKD: MMANGARUDOV 2013/07/02 APPR: SSTE INKE 2013/10/31	QUALITY SYMBOLS ▽=0 ▽=0	GENERAL TOLERANCES (UNLESS SPECIFIED)		DIMENSION STYLE MM ONLY		SCALE 2:1	DESIGN UNITS METRIC	THIRD ANGLE PROJECTION
		mm	INCH	DRAWN BY JBADER	DATE 2013/07/02	TITLE GIGABIT MAGNETIC JACK POE PLUS ENABLED 2X4 LED		
		4 PLACES	± ---	± ---	CHECKED BY MMANGARUDOV	DATE 2013/07/02	MOLEX INCORPORATED	
		3 PLACES	± ---	± ---	APPROVED BY SSTE INKE	DATE 2013/10/31		
		2 PLACES	± 0.25	± ---	MATERIAL NO. SEE SHEET 3		DOCUMENT NO. SD-85735-201	SHEET NO. 1 OF 4
		1 PLACE	± 0.5	± ---	THIS DRAWING CONTAINS INFORMATION THAT IS PROPRIETARY TO MOLEX INCORPORATED AND SHOULD NOT BE USED WITHOUT WRITTEN PERMISSION			
		ANGULAR ± .5 °						
DRAFT WHERE APPLICABLE MUST REMAIN WITHIN DIMENSIONS								



DETAIL3
SCALE 4:1



DETAIL2
SCALE 4:1

ENTER DESCRIPTION EC NO: IPG2014-0764 DRWN: JBADER 2013/07/02 CHKD: MMANGARUDOV 2013/07/02 APPR: SSTEINKE 2013/10/31	QUALITY SYMBOLS ▽=0 ▽=0	GENERAL TOLERANCES (UNLESS SPECIFIED)		DIMENSION STYLE MM ONLY		SCALE 2:1	DESIGN UNITS METRIC	THIRD ANGLE PROJECTION
			mm	INCH	DRAWN BY JBADER	DATE 2013/07/02	TITLE GIGABIT MAGNETIC JACK POE PLUS ENABLED 2X4 LED	
REV A	DESCRIPTION	4 PLACES ± --- ± ---	APPROVED BY SSTEINKE		DATE 2013/10/31	DOCUMENT NO. SD-85735-201		
		3 PLACES ± --- ± ---	MATERIAL NO. SEE SHEET 3		DATE 2013/07/02	SHEET NO. 2 OF 4		
DRAFT WHERE APPLICABLE MUST REMAIN WITHIN DIMENSIONS		2 PLACES ± 0.25 ± ---	APPROVED BY SSTEINKE		DATE 2013/10/31	INCORPORATED AND SHOULD NOT BE USED WITHOUT WRITTEN PERMISSION		
		1 PLACE ± 0.5 ± ---	ANGULAR ± .5 °					

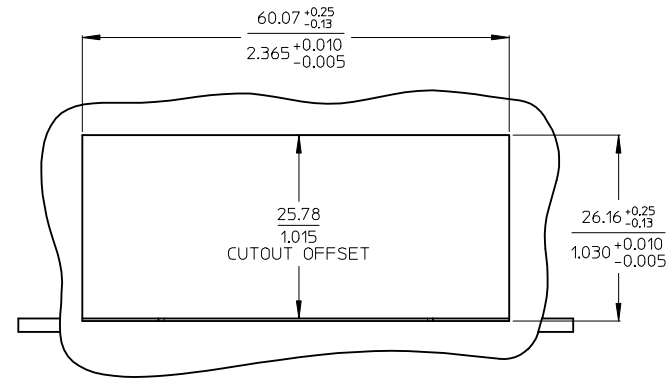
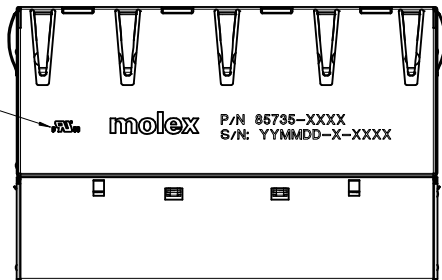
PRINTING

LED VERSION

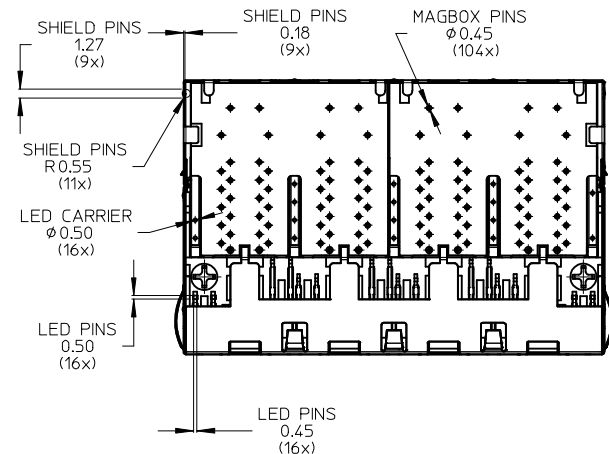
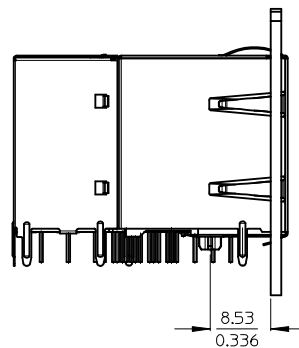
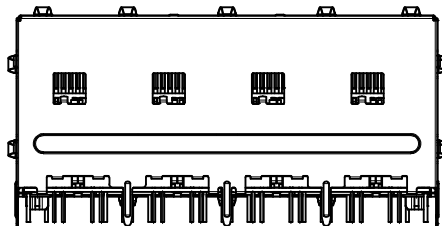
P/N: 85735-XXXX
S/N: YYMMDD-CM-CONSECUTIVE NUMBER

PRINTING

SEE NOTE 3



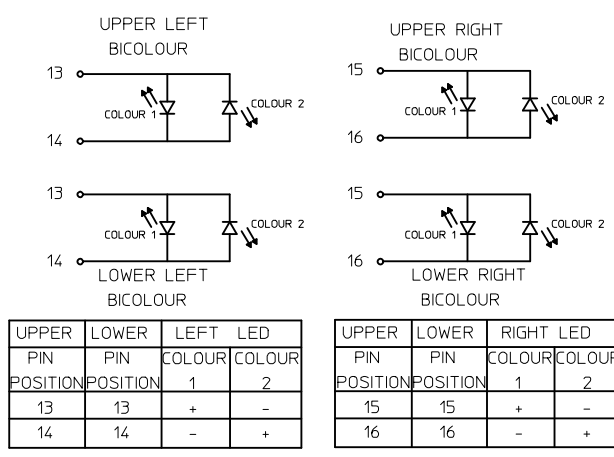
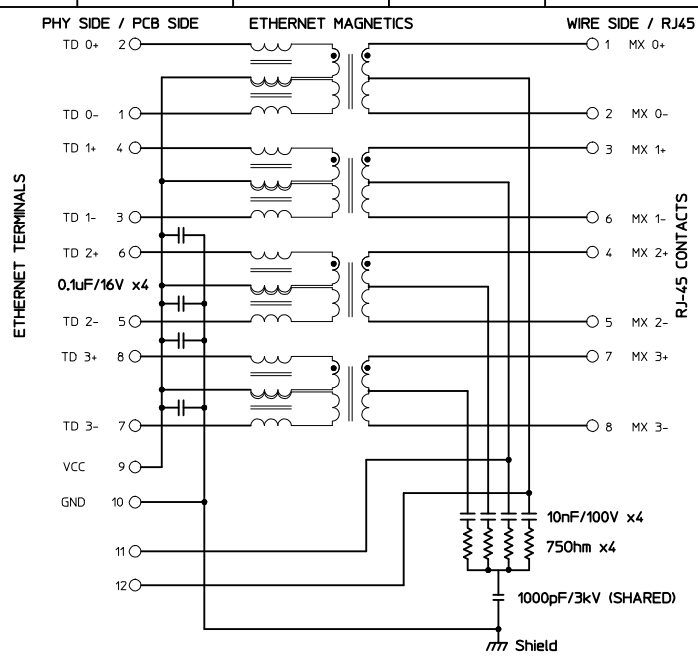
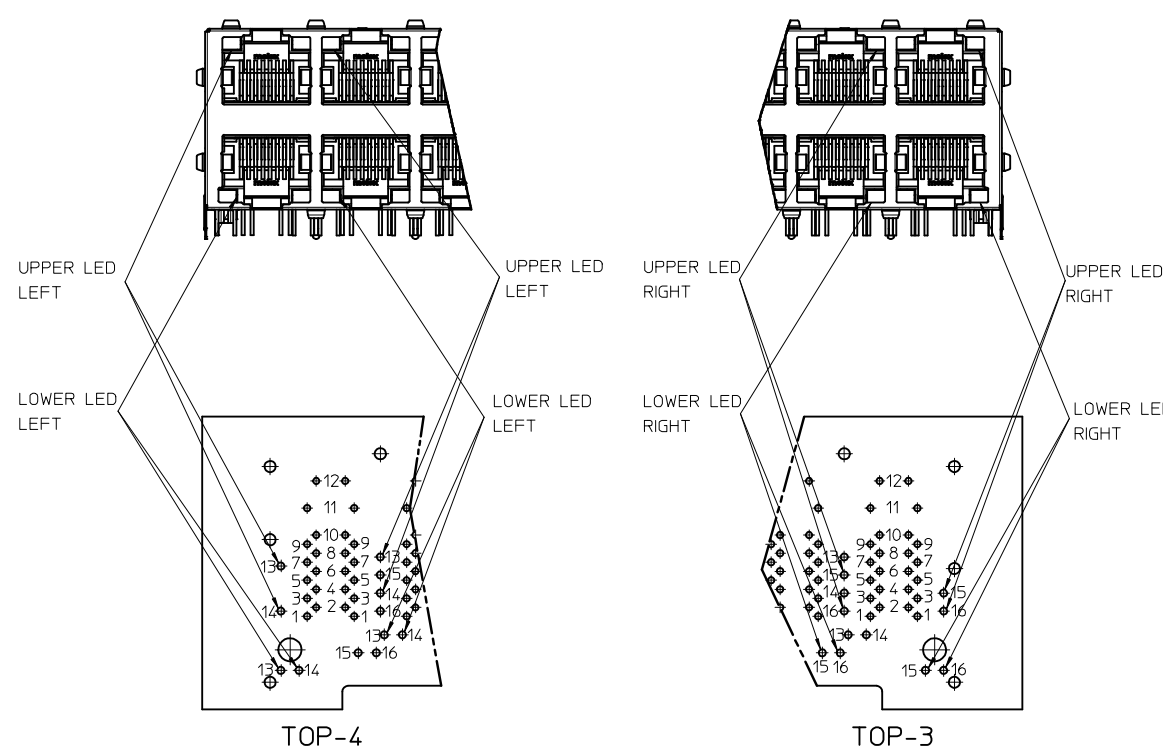
SUGGESTED PANEL CUT OUT



NOTES:

- PRINTING MARKED BY LASER
- INSCRIPTION:
 - 1st LINE: PART NUMBER
 - 2nd LINE: DATE CODE (YEAR, MONTH, DAY)- MANUFACTURER ID - CONSECUTIVE NUMBER
- UL LOGO

ENTER DESCRIPTION EC NO: IPC2014-0764 DRAWN BY: JBADER 2013/07/02 CHKD: MMANGARUDOV 2013/07/02 APPR: SSTE INKE 2013/10/31	QUALITY SYMBOLS ▽=0 ▽=0	GENERAL TOLERANCES (UNLESS SPECIFIED)		DIMENSION STYLE MM ONLY		SCALE 2:1	DESIGN UNITS METRIC	THIRD ANGLE PROJECTION
		4 PLACES ± --- ± ---	3 PLACES ± --- ± ---	2 PLACES ± 0.25 ± ---	1 PLACE ± 0.5 ± ---	ANGULAR ± .5 °	DRAFT WHERE APPLICABLE MUST REMAIN WITHIN DIMENSIONS	DRAWN BY: JBADER 2013/07/02 CHECKED BY: MMANGARUDOV 2013/07/02 APPROVED BY: SSTE INKE 2013/10/31
A	REV	SIZE A 2		SEE BOM		MATERIAL NO.	DOCUMENT NO. SD-85735-201	SHEET NO. 3 OF 4



POWER-SUPPLY POLARITY DEFINITION
TO ACHIEVE PoE POWER ASSIGNMENT
ACCORDING IEEE 802.3at
ALTERNATIVE A:

	MDI-X	MDI
PIN 11	Vc +	Vc -
PIN 12	Vc -	Vc +

PIN	ETHERNET MAGNETICS
10	GND
9	Vcc
8	TD 3+
7	TD 3-
6	TD 2+
5	TD 2-
4	TD 1+
3	TD 1-
2	TD 0+
1	TD 0-
11	PWR 3-6
12	PWR 1-2

ENTER DESCRIPTION EC NO: IFC2014-0764 DRWN: JBADER 2013/07/02 CHKD: MMANGARUDOV 2013/07/02 APPR: SSTEINKE 2013/10/31	QUALITY SYMBOLS ▽=0 ▽=0	GENERAL TOLERANCES (UNLESS SPECIFIED)		DIMENSION STYLE MM ONLY	SCALE 2:1	DESIGN UNITS METRIC	THIRD ANGLE PROJECTION
		4 PLACES ± --- ± --- 3 PLACES ± --- ± --- 2 PLACES ± 0.25 ± --- 1 PLACE ± 0.5 ± --- ANGULAR ± .5 °	mm INCH ± --- ± --- ± 0.25 ± --- ± 0.5 ± ---	DRAWN BY JBADER DATE 2013/07/02	CHECKED BY MMANGARUDOV DATE 2013/07/02	TITLE GIGABIT MAGNETIC JACK POE PLUS ENABLED 2X4 LED	
REVISION A	DRAFT WHERE APPLICABLE MUST REMAIN WITHIN DIMENSIONS	MATERIAL NO. SEE SHEET 3		APPROVED BY SSTEINKE DATE 2013/10/31		MOLEX INCORPORATED	
		SIZE A 2		THIS DRAWING CONTAINS INFORMATION THAT IS PROPRIETARY TO MOLEX INCORPORATED AND SHOULD NOT BE USED WITHOUT WRITTEN PERMISSION		DOCUMENT NO. SD-85735-201	