



## EVN-EMA Range Emergency fluorescent fitting with automatic test



### Approvals / Characteristics



### Features

- Main body constructed of a GRP for high impact strength
- Polycarbonate diffuser to resist harsh and corrosive environments
- Battery duration 3 hours
- Automatic testing for preventive maintenance
- Clear LED for easy visual inspection
- Including accessories, cable gland & fixing brackets

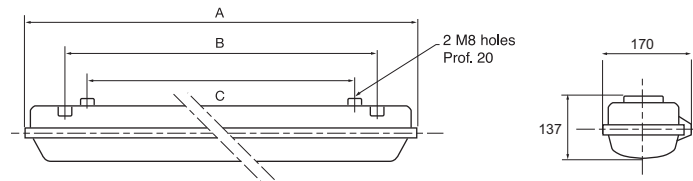
### Certification & Standards

Approved to: EN60079-0, 60079-15, EN61241-1  
 EC TYPE Examination Certificate: Under new 94/9/EC self certified  
 Ex II 3 G  
 Ex nr IIC T4 Gb for  $\leq -40^{\circ}\text{C}$  to  $\leq +60^{\circ}\text{C}$   
 Ex nr IIC T6 Gb for  $\leq -40^{\circ}\text{C}$  to  $\leq +35^{\circ}\text{C}$   
 Ex II 3 D  
 Ex td IIC A22 T85 $^{\circ}\text{C}$  to T135 $^{\circ}\text{C}$  Db IP6x  
 Glow wire test: 960 $^{\circ}\text{C}$  EN605988-2-22  
 Safe operating temperature range: -10 $^{\circ}\text{C}$  to +40 $^{\circ}\text{C}$

# Ex Emergency lighting - EVN-EMA Range

## Dimensions

## Technical Specifications



Type	Wiring		Battery	Nominal Current (A)	Dimensions (mm)			Weight (kg)
	Configuration	Rating (W)			A	B	C	
EVN120EMA-A000	5 Wire Loop	1 x 18	3h	0.09	785	170	432	6.5
EVN140EMA-A000	5 Wire Loop	1 x 36	3h	0.17	1370	170	900	8.5
EVN140EMA-B000	5 Wire Through	1 x 36	3h	0.17	1370	170	900	8.5
EVN220EMA-A000	5 Wire Loop	2 x 18	3h	0.17	785	170	432	7.5
EVN240EMA-A000	5 Wire Loop	2 x 36	3h	0.33	1370	170	900	10.5
EVN240EMA-B000	5 Wire Through	2 x 36	3h	0.33	1370	170	900	10.5

### Enclosure

Fibreglass reinforced polyester body  
Polycarbonate diffuser (protective coating optional)  
EPDM cellular gasket

### Power factor

Superior to 0.98

### Cable entries

Standard: Three M20 entries included  
Two M20 Nylon plugs and  
One cable gland - ISO M20 Nylon, diameter  
8-13mm for non-armoured cable

### Fixing

Standard: V015 - 2 Zinc Plated Steel brackets for  
ceiling mounting

### Rated voltages

Standard: single tube electronic ballast  
AC 220-240V, 50-60Hz  
For other voltages contact Sales

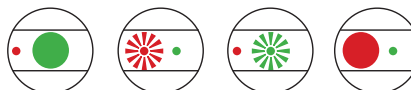
### Battery

Ni-Cd 6V 4Ah for 18W /  
Ni-Cd 6V 7Ah for 36W battery  
Lumen level in emergency mode (1 tube lit): 40%  
in 18W, 33% in 36W  
Battery duration in emergency mode:  
3 hours

### Preventive maintenance - Self test

- Battery charge - daily
- Emergency lamp during 1min - weekly
- Battery charge capacity during 1hr - quarterly
- Clean system test display

Battery charge monitored by 2 LED



Healthy  
(test OK)

Emergency or  
Indicator  
Lamp Fault  
(must be  
replaced)

Test in  
Progress  
(waiting end  
of test)

Fault  
(replace  
battery)

### Terminal block

Up to 6mm<sup>2</sup> (rigid wire), 4.5mm<sup>2</sup> (flexible wire)  
Separate switch from line  
**Lamps** (order separately)

Tube G13 bi-pin T8 Ø 26 coolwhite 4000°k

Spares & Fixings Accessories see pages 94-99



EXB Conduit 136



Nylon Stopping  
Plugs 164



XB100 Range 108



Exe Nylon Gland 166

## Related Products