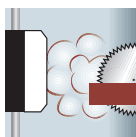
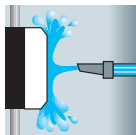
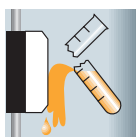




Switch-Disconnecter DMM125 and DMM160 in CI-K5-enclosure



We have added Dumeco DMM125 and DMM160 switch-disconnectors with a CI-K5 enclosure to our range of main switch, maintenance switch, and repair switch products. This means that this range of products now features units with current ratings of 125 A and 160 A as well. The fibre glass reinforced polycarbonate housing is a robust solution offering tremendous chemical resistance performance. The high-quality seal on the housing is rated to protection class IP65, ensuring full protection for the switchgear. Total insulation offers optimal protection for the operator.

The DMM125 and DMM160 are universally compatible with the blue or grey toggles. All units will also be available in two versions: a version that can be locked with a padlock (max. three padlocks) and a version with a cylinder lock.

The switch-disconnectors are available in 3-pole, 3-pole + solid neutral, and 4-pole configurations.

EATON

Powering Business Worldwide

Product range DMM125 and DMM160 at a glance

Designation	Part no.	Article no.	Part no.	Article no.
	125 Ampere		160 Ampere	
Main switch 3P, surface mounting, cylinder lock				
Toggle blue	DMM-125/3/I5/C-B	172858	DMM-160/3/I5/C-B	172801
Toggle grey	DMM-125/3/I5/C-G	172859	DMM-160/3/I5/C-G	172802
Toggle red/yellow	DMM-125/3/I5/C-R	172860	DMM-160/3/I5/C-R	172803
Main switch 3P, surface mounting, padlock				
Toggle blue	DMM-125/3/I5/P-B	172849	DMM-160/3/I5/P-B	172792
Toggle grey	DMM-125/3/I5/P-G	172850	DMM-160/3/I5/P-G	172793
Toggle red/yellow	DMM-125/3/I5/P-R	172851	DMM-160/3/I5/P-R	172794
Main switch 3P+N, surface mounting, cylinder lock				
Toggle blue	DMM-125/3N/I5/C-B	172855	DMM-160/3N/I5/C-B	172798
Toggle grey	DMM-125/3N/I5/C-G	172856	DMM-160/3N/I5/C-G	172799
Toggle red/yellow	DMM-125/3N/I5/C-R	172857	DMM-160/3N/I5/C-R	172800
Main switch 3P+N, surface mounting, padlock				
Toggle blue	DMM-125/3N/I5/P-B	172846	DMM-160/3N/I5/P-B	172789
Toggle grey	DMM-125/3N/I5/P-G	172847	DMM-160/3N/I5/P-G	172790
Toggle red/yellow	DMM-125/3N/I5/P-R	172848	DMM-160/3N/I5/P-R	172791
Main switch 4P, surface mounting, cylinder lock				
Toggle blue	DMM-125/4/I5/C-B	172861	DMM-160/4/I5/C-B	172804
Toggle grey	DMM-125/4/I5/C-G	172862	DMM-160/4/I5/C-G	172805
Toggle red/yellow	DMM-125/4/I5/C-R	172863	DMM-160/4/I5/C-R	172806
Main switch 4P, surface mounting, padlock				
Toggle blue	DMM-125/4/I5/P-B	172852	DMM-160/4/I5/P-B	172795
Toggle grey	DMM-125/4/I5/P-G	172853	DMM-160/4/I5/P-G	172796
Toggle red/yellow	DMM-125/4/I5/P-R	172854	DMM-160/4/I5/P-R	172797

Dimensions

