

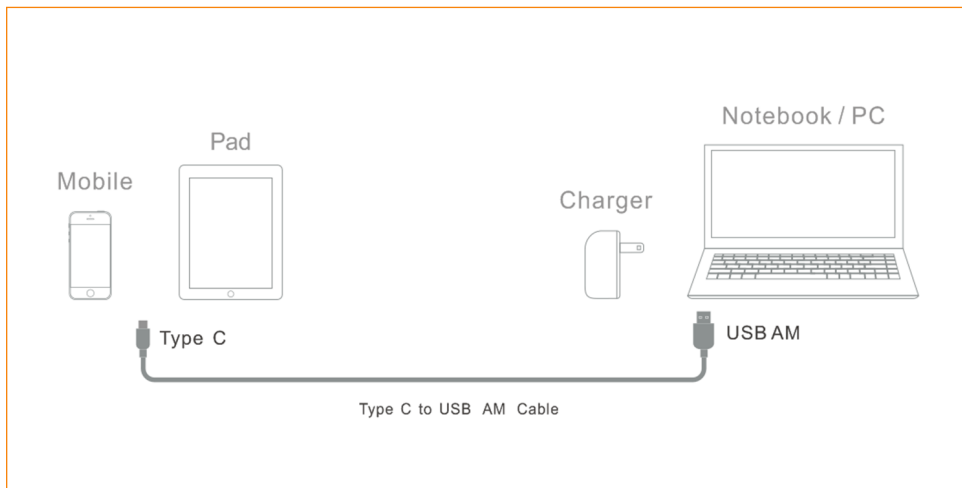
USB Type-C

- *Simpler, faster and more powerful.*



Type-C USB allows for bi-directional power, so apart from charging the peripheral device, when applicable, a peripheral device could also charge a host device. All this means you can do away with an array of proprietary power adapters and USB cables, and move to a single robust and tiny solution that works for all devices. Type-C USB will significantly cut down the amount of wires currently needed to make devices work.

Type-C to Type-A



- An entirely new design tailored to work well with emerging product designs.
- New smaller size - similar in size to the existing USB 2.0 Micro-B.
- Usability enhancements - users will no longer need to be concerned with plug orientation/cable direction, making it easier to plug in.
- The Type-C connector and cable will support scalable power and charging.
- Scalability - the connector design will scale for future USB performance.

The Type C Connector will be the Standard Connector in all New Tablets and Devices including the iPhone 7, (unlike) USB connectors it is Capable of Powering Monitors and other Devices.

CABLE POWER

Call **01206 825 381** to find out more or visit our website at www.cablepower.co.uk

Length	1 Metre
Width A Plug	15.2mm
Width C Plug	11.7mm
Height A Plug	7.58mm
Height C Plug	5.80mm
Hot pluggable	Yes
External	Yes
Cable	32AWG*1P+ 24AWG*1C+FE AB,TPE.WHITE,OD:3.0MM,V W-1
Connector A	single face, Au 30u,Black,UL 94V-0
Connector C	USB 22 Pin Au 30u Shell Plated NI, Black, UL94V-0
Signal	D+ D-
Max Voltage	5V
Max Current	3A
Max Watts	15W
Data Signal	360~440mv(High-speed data signaling high) -10~10mv(High-speed data signaling low)
	14ns MAX (Full-speed Data Timings)
	210ns MAX (Low-speed Source Electrical Characteristics)
Bitrate	480Mbps
Protocol	USB 2.0

USB Type-C

- Simpler, faster and more powerful.

CABLE POWER

Call 01206 825 381 to find out more or visit our website at www.cablepower.co.uk

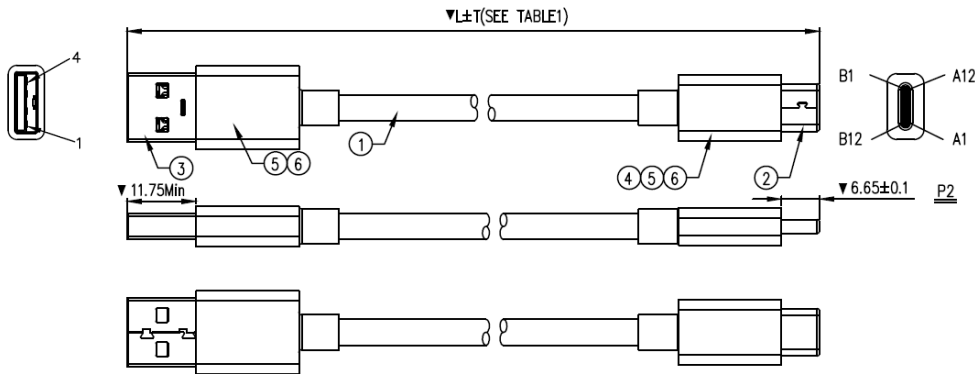


Table 1

Current Rating 0.5A						
ITEM	LENGTH(mm)	Tol.(mm)	Vbus AWG	GND AWG	SIGNAL AWG	OD (mm)
1	1000	±30	30	30	32	2.6
2	2000	±50	30	26	30	2.8
3	4000	±100	26	24	28	3.2
Current Rating 1.5A						
ITEM	LENGTH(mm)	Tol.(mm)	Vbus AWG	GND AWG	SIGNAL AWG	OD (mm)
4	1000	±30	28	24	32	2.8
5	2000	±50	24	20	30	3.2
6	4000	±100	20	16	28	4.0
Current Rating 3A						
ITEM	LENGTH(mm)	Tol.(mm)	Vbus AWG	GND AWG	SIGNAL AWG	OD (mm)
7	1000	±30	24	20	32	3.0
8	2000	±50	20	16	30	4.0

Table 2

3A	10KΩ
1.5A	22KΩ
0.5A	56KΩ
CURRENT	Rp

Table 3

1	VBUS	SEE TABLE 1	VBUS	A4,B4,A9,B9	Rp (SEE TABLE 2)
2	D-		D-	A7	
3	D+		D+	A6	
4	GND		GND	A1,B1,A12,B12	
			CC	A5	
SHELL	SHIELD	SHIELD	SHIELD	SHELL	
PIN	SIGNAL	WIRE AWG	SIGNAL	PIN	
P1		WIRE	P2		
WIRE CONNECTION TABLE					