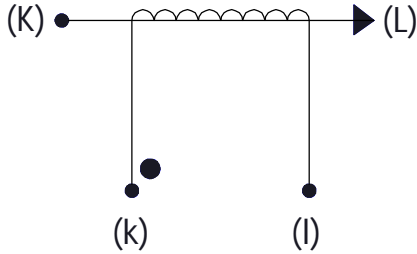


Product Type	Current Transformer
GT Part Number	L01-8003
Alttec Part Number	L01-8003
Place of Manufacture	GT Electronic India Pvt Ltd

SCHEMATIC:

ELECTRICAL SPECIFICATION:



- Rated Input Current = 100A
- Secondary nominal Current = 5A
- Burden = 2.5VA
- Maximum operating Voltage = 0.72kV
- Operating Frequency = 50 / 60 Hz
- Turns Ratio = 1:20
- Primary to secondary isolation = 3kV
- Temperature Class = E
- Ambient Temperature ≤ 40°C

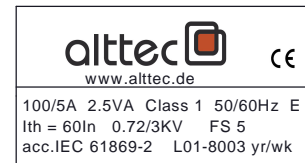
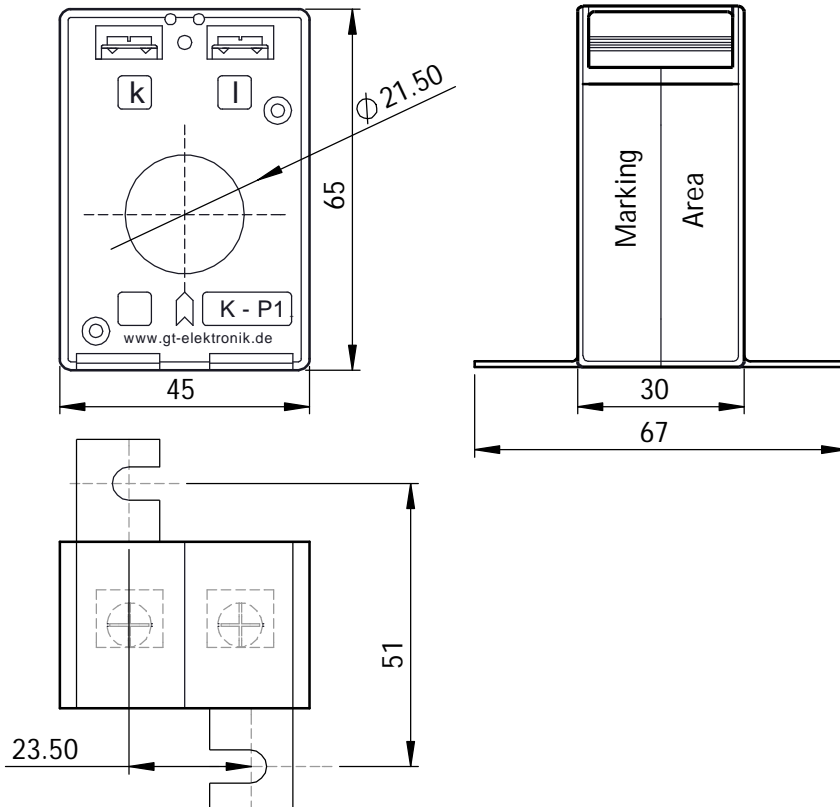


LOAD TEST DETAILS

Testing Parameters	% of Rated Input Current								Accuracy Class
	5%		20%		100%		120%		
	Ratio Error in %	Phase Error in minute	Ratio Error in %	Phase Error in minute	Ratio Error in %	Phase Error in minute	Ratio Error in %	Phase Error in minute	
Specifications	Max ±3.0%	Max 180	Max ±1.5%	Max 90	Max ±1.0%	Max 60	Max ±1.0%	Max 60	1

MECHANICAL SPECIFICATION:

MARKING INFORMATION:



TRAFU. WEIGHT:

Approximate trafo. weight = ~ 0.210kg

All Dimensions are in mm
Dimensional Tolerance ±0.2mm

----- Initial Issue -----	1	0	R.Arunprasad	13-Nov'15
Changes	Issue	Rev	Initial	Date