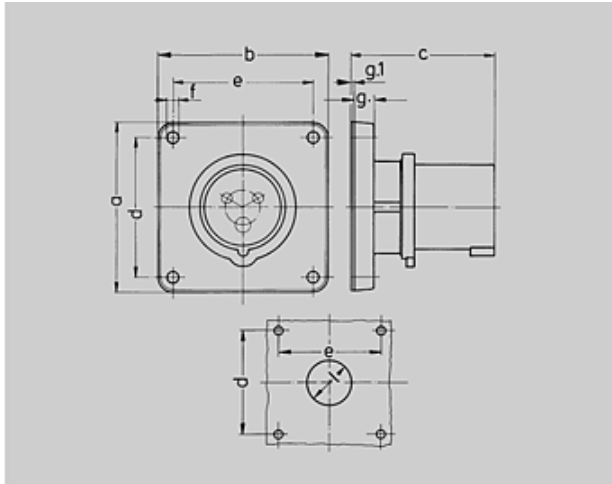




: 810







## Panel mounted inlet

with nickel-plated contacts, a retaining nose to hold the hinged lid of the connector must be provided by the customer in order to ensure satisfactory locking



Drawing	Amp.	16			32		
		3	4	5	3	4	5
<b>2 MB 173/2 Poles</b>							
<b>Dim. in mm</b>	<b>a</b>	85,7	85,7	85,7	85,7	85,7	85,7
	<b>b</b>	85,7	85,7	85,7	85,7	85,7	85,7
	<b>c</b>	72	72	72	90	90	90
	<b>d</b>	69,5	69,5	69,5	69,5	69,5	69,5
	<b>e</b>	69,5	69,5	69,5	69,5	69,5	69,5
	<b>f</b>	5,5	5,5	5,5	5,5	5,5	5,5
	<b>g.</b>	11	11	11	11	11	11
	<b>g.1</b>	2	2	2	2	2	2
	<b>l</b>	32	36	36	47	47	47
	<b>Terminal for cond. cross section (mm²) min.-max.</b>		1,5	1,5	1,5	2,5	2,5
		-4	-4	-4	-10	-10	-10

	<b>: 2083</b>
voltages :	110V
rated current :	16A
pole :	3 pole
IP protection types :	44
position of ground contact :	4h
	: 136

		<b>110</b>	<b>230</b>	<b>400</b>	<b>500</b>	<b>&gt;50-500</b>	
		50,60	50,60	50,60	50,60	100-300	300-500
							
<b>16 A</b>	3	<b>810</b>	812				
	4		837	813	814		
	5			815			
<b>32 A</b>	3	816	817				
	4		838	819	820		
	5			821			