

Datasheet

## **RS Pro Black Brass, Fibreglass Reinforced Nylon Concealed Fixings Matte Handle, 107mm x 40.5mm x 20mm 94mm**

RS Stock No: **456-551**



### **Product Details**

RS Pro drawer handle measures 107 x 40.5 x 20 mm. This handle in black colour, is made of brass and fibreglass reinforced nylon with matte finishing for added durability. The fixing centres are 94 mm apart.

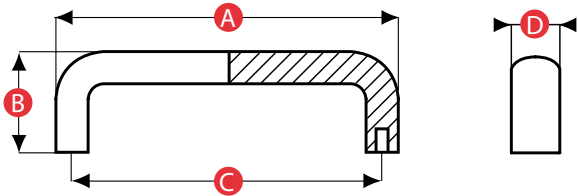
### **Features and Benefits**

- Black thermoplastic non chip material
- Threaded brass inserts
- Durable construction

**Specifications:**

Colour	Black
Concealed Fixings	Yes
Finish	Matte
Insert Material	Brass
Material	Brass, Fibreglass Reinforced Nylon
Thread Type	M5
Fixing Centres	94 mm
Height	40.5 mm
Length	107 mm
Width	20 mm

Bridge Handle Model 07 - Nylon - Concealed



PATTERN	PART NO.	A	B	C	D	THREAD SIZE	WEIGHT (g)
65094	456551	107	40.5	94	20	M5	42.9
65117	456557	134	50	117	25	M6	84.5
65120	456563	137	50	120	25	M6	86.5
65132	456529	148	50	132	25	M6	92.5
65150	456513	168	58	150	29	M8	128.1
65179	456523	197	58	179	29	M8	286.0

Material: 15% glass filled nylon (PA6)  
 Insert Material: Brass  
 Standard Colour: Black  
 Available colours: A wide range of RAL colours can be produced  
 - MOQs apply

All dimensions are in mm (unless otherwise stated) and are approximate. All weights are in grams and are approximate.