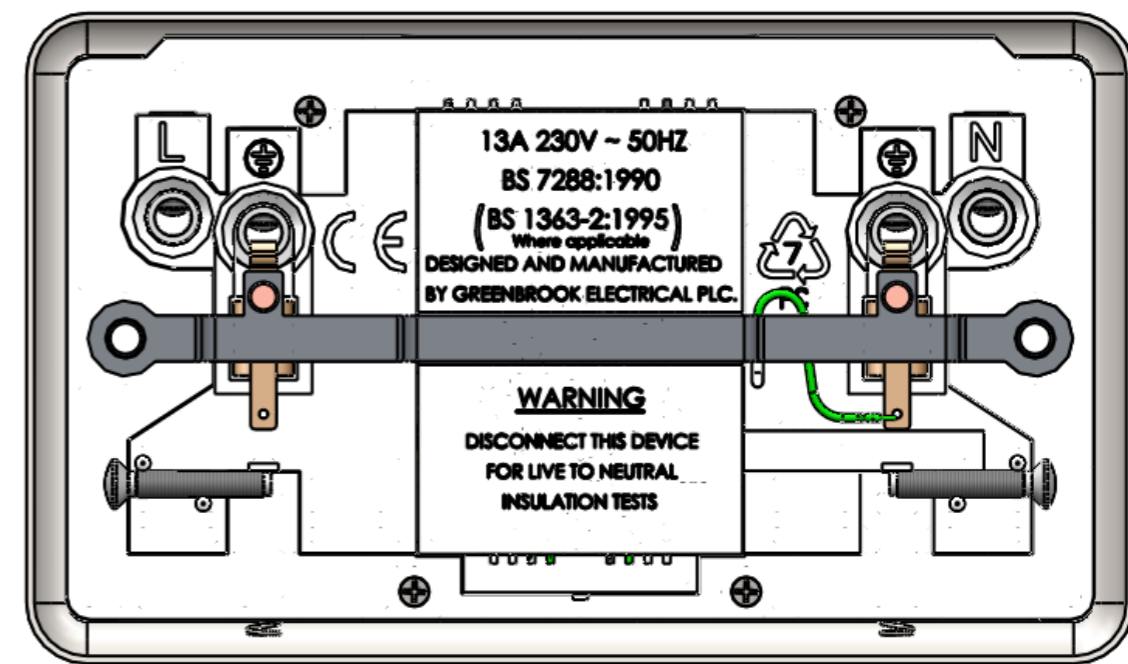
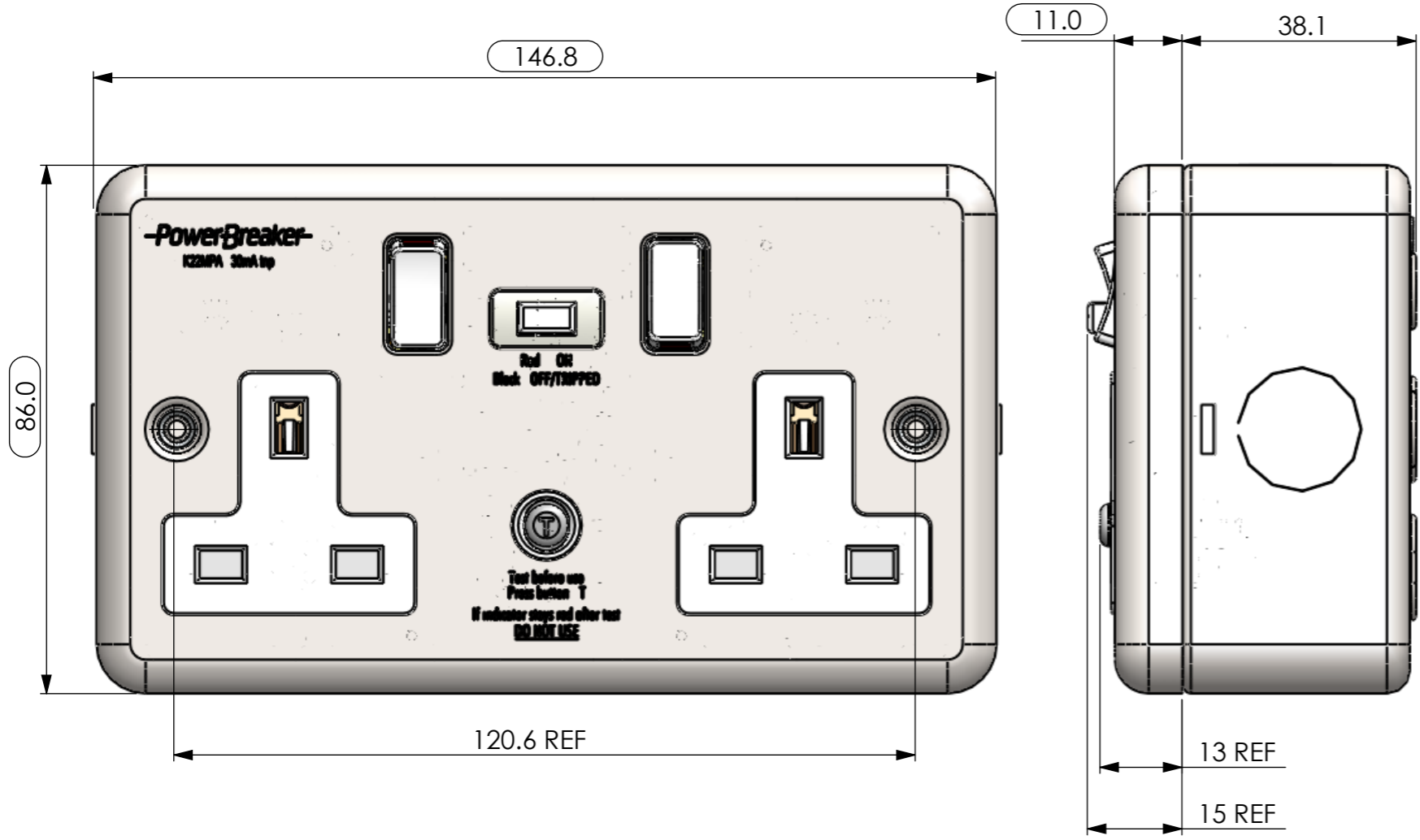
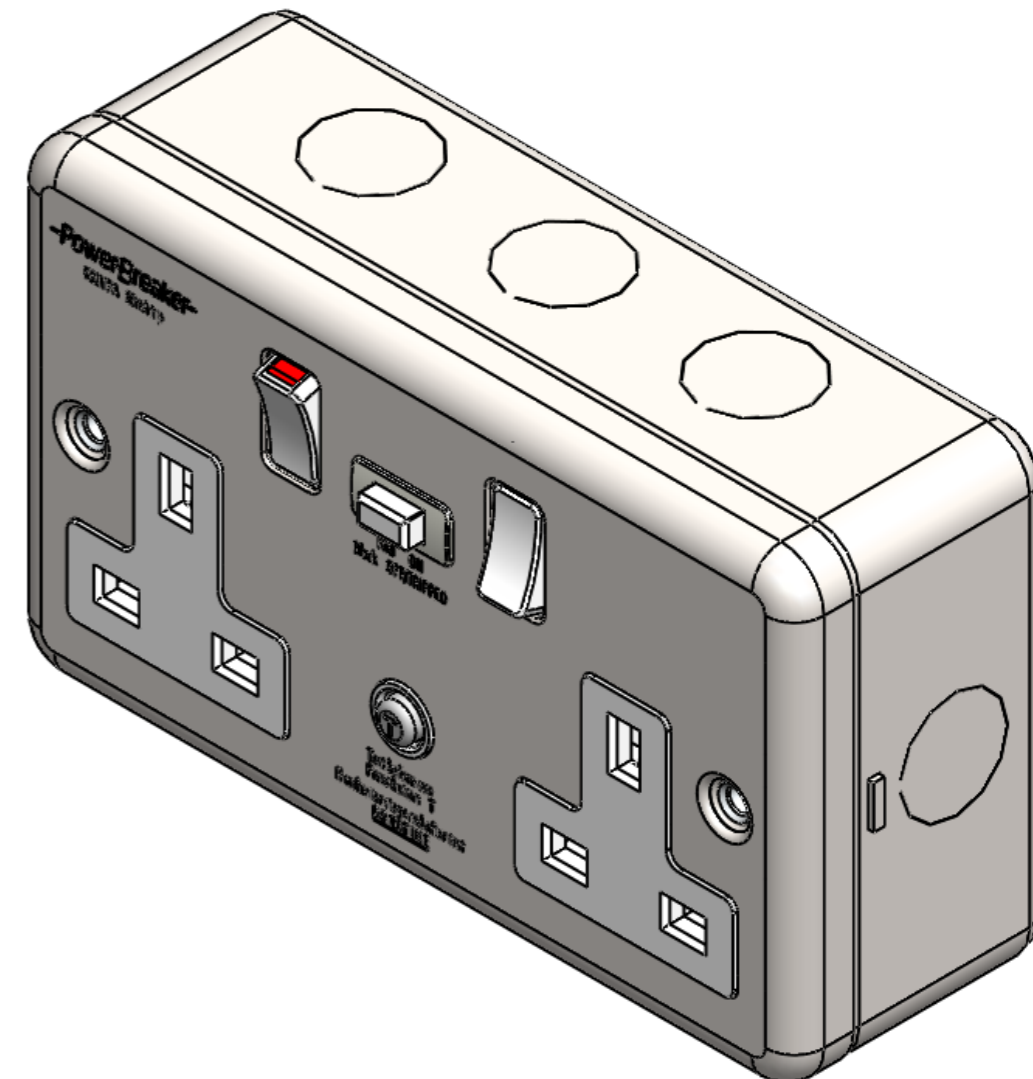


AND DESIGN GREENBROOK ELECTRICAL PLC. CONTENTS STRICTLY PRIVATE AND CONFIDENTIAL. TO BE USED ONLY FOR THE PURPOSES NOTIFIED BY GREENBROOK ELECTRICAL PLC. OR ITS LICENCEE.
 ALL INTELLECTUAL PROPERTY IN AND IN RELATION TO THIS DRAWING AND ITS SUBJECT MATTER ARE RESERVED, AND HEREBY LICENCED TO GREENBROOK ELECTRICAL PLC.

1 2 3 4 5 6 7 8

A
B
C
D
E



| | | |
|---------|----------|--------------|
| | | |
| A | 100 | 22/12/10 |
| ISS | CCD | DATE |
| DWG NO. | GB400340 | A3GB |
| | | SHEET 1 OF 3 |

MATERIAL:

FINISH:

PROJECTION THIRD ANGLE. IF IN DOUBT ASK

TOLERANCES
(UNLESS STATED OTHERWISE)

- 1 DEC PLACE 0.4
- 2 DEC PLACE 0.1
- ANGULAR 1.0

DRAFT CONSIDERATIONS
(S) - SMALLEST DIMENSION
(L) - LARGEST DIMENSION
GENERAL - 1 PER SIDE 0.5

ALL DIMENSIONS IN MILLIMETERS



TITLE:

K22MPA Product Specification

GREENBROOK
WEST ROAD, HARLOW
ESSEX CM20 2BG UK

DRAWN BY C.E

SCALE: 1:1

DO NOT SCALE THIS DRAWING

DESCRIPTION - K22MPA - Twin Metalclad RCD Socket - Switched

The "K" series RCD socket is a double pole fixed socket Residual Current Device (SRCD) with switched output sockets in the form of a 13 amp device for the installation into standard BS4662 wall box installation. It is designed and manufactured to the requirements of BS7288. The products are based upon a generic design and construction with variations to include:
 White Plastic face plate versions for domestic / light industrial applications.
 Metal clad enclosure variants for the more robust applications

CLASSIFICATION

Fixed RCD socket outlet (SRCD)
 Double Pole break
 Mechanically latched (contacts remain closed when mains power is removed and re-applied) - generally defined as "Passive"
 CLASS 2 device.

BRITISH AND EUROPEON STANDARDS

Current Standards
 BS7288 :1990 (socket out-lets incorporating SRCD`s)
 BS1363-2:1995 (specification for 13A socket-outlets.)
 BS4662:2006 (Flush mounted boxes for electrical accessories)
 EMC -
 Emissions: EN 55014-1:2006 & EN55014-1:2000 inc A1:2001 & A2:2002
 Immunity: EN 61543:1995 inc A11:2003, A12:2005 & A2:2006

RATING

Voltage 230 Volts AC
 Current (max) 13 Amps Resistive - 13 Amps inductive (Each socket out-let)
 Frequency 50 Hertz
 Environmental IP40 (Ingress Protection Rating)
 Trip Current 30 mA maximum 22 mA typical
 Non Trip Current 15 mA max
 Trip Speed 20 mSeconds (at 150mA)
 Circuit fault break current 1500Amps
 Earth fault break current 250 Amps

DESIGN FEATURES

Built in switches for socket disconnection (Live only)
 Additional safety indication:
 White Button: Switches mechanism "ON"
 Trip indication: Red flag & light - visible only when mechanism ON (closed contacts)
 Test Button: Activates mechanism to "OFF"
 Enclosure: Polycarbonate skeleton plate with metal cover and metal backbox assy.
 Rear molding - Thermoplastic, High Impact, Colour "White"

INSTALLATION & TESTING

System Install as a BS1363 wiring accessory in-line with the 17th Edition Wiring Regulations.
 Routine Testing Assuming the device has been installed correctly the SRCD should be tested regularly, each time before use, as follows:-
 Press White button fully in and release
 Window indicator shows "RED" & illuminates.
 Press Test button fully in and release.
 Window indicator has turned WHITE (no illumination)
 In this test the device has latched ready for use and then has been tested using the in built test function. Device is now ready for normal use.
 To Use - Press and release white button. Red flag & light illumination will be displayed in the respective window..
 RCD Performance Testing. RCD testers (ROBIN KMP5406) are available for this purpose.
 Circuit Insulation, Resistance and Earth Fault loop impedance Testing:
 It is important that the device is disconnected during these tests otherwise the internal electronics maybe damaged.

SERVICE CONDITIONS

Temperature -5 to +40 degrees C
 Altitude 2000m max (above sea level)
 Abnormal conditions Avoid pollution by smoke, chemical and flammable fumes,
 Salt laden spray, periods of high humidity, greater 95% Relative Humidity (R.H.)

| | | | |
|--------------|-----|----------|----------|
| ISS | A | 100 | 22/12/10 |
| DATE | ISS | CCD | DATE |
| DWG NO. | | GB400340 | |
| SHEET 2 OF 3 | | A3 | |

TITLE:
 K22MPA Product Specification
 DRAWN BY C.E
 SCALE: 1:1
DO NOT SCALE THIS DRAWING



DRAFT CONSIDERATIONS
 (S) - SMALLEST DIMENSION
 (L) - LARGEST DIMENSION
 GENERAL - 1 PER SIDE 0.5
ALL DIMENSIONS IN MILLIMETERS

TOLERANCES
 (UNLESS STATED OTHERWISE)
 - 1 DEC PLACE 0.4
 - 2 DEC PLACE 0.1
 - ANGULAR 1.0

MATERIAL:
FINISH:
PROJECTION THIRD ANGLE. IF IN DOUBT ASK

AND DESIGN GREENBROOK ELECTRICAL PLC. CONTENTS STRICTLY PRIVATE AND CONFIDENTIAL. TO BE USED ONLY FOR THE PURPOSES NOTIFIED BY GREENBROOK ELECTRICAL PLC. OR ITS LICENCEE. ALL INTELLECTUAL PROPERTY IN AND IN RELATION TO THIS DRAWING AND ITS SUBJECT MATTER ARE RESERVED, AND HEREBY LICENCED TO GREENBROOK ELECTRICAL PLC.

CONNECTIONS

| L | N | E | Notes | Trip | Damaged after connected | Test Button | Protection | Output LED |
|---|---|---|---------------------------------|------|-------------------------|----------------|--------------------------|-------------------------|
| L | N | E | Correctly connected | No | No | Functional | OK | ON |
| L | E | N | Earth and Neutral reversed | No | No | Functional | OK | ON |
| N | L | E | Line and Neutral reversed | No | No | Functional | OK | ON |
| N | E | L | Line to Earth, always dangerous | No | No | Not Functional | OK | ON (weak brightness) |
| E | N | L | Line to Earth, always dangerous | No | No | Not Functional | OK | ON (weak brightness) |
| E | L | N | | No | No | Functional | OK | ON |
| L | N | - | Earth not connected | No | No | Functional | OK | ON |
| N | L | - | Earth not connected | No | No | Functional | OK | ON |
| L | - | E | Neutral not connected | No | No | Not Functional | OK | ON (weak brightness) |
| E | - | L | Neutral not connected | No | No | Not Functional | OK | ON (weak brightness) |
| - | N | E | Line not connected | No | No | Not Functional | no leakage current occur | OFF |
| - | E | N | Line not connected | No | No | Not Functional | no leakage current occur | OFF |
| | L | E | Dangerous | No | No | Not Functional | OK | ON (weak brightness) |

| | | |
|-----|-----|----------|
| | | |
| A | 100 | 22/12/10 |
| ISS | CCD | DATE |

MATERIAL:
FINISH:
PROJECTION THIRD ANGLE. IF IN DOUBT ASK

TOLERANCES
(UNLESS STATED OTHERWISE)
- 1 DEC PLACE 0.4
- 2 DEC PLACE 0.1
- ANGULAR 1.0

DRAFT CONSIDERATIONS
(S) - SMALLEST DIMENSION
(L) - LARGEST DIMENSION
GENERAL - 1 PER SIDE 0.5
ALL DIMENSIONS IN MILLIMETERS

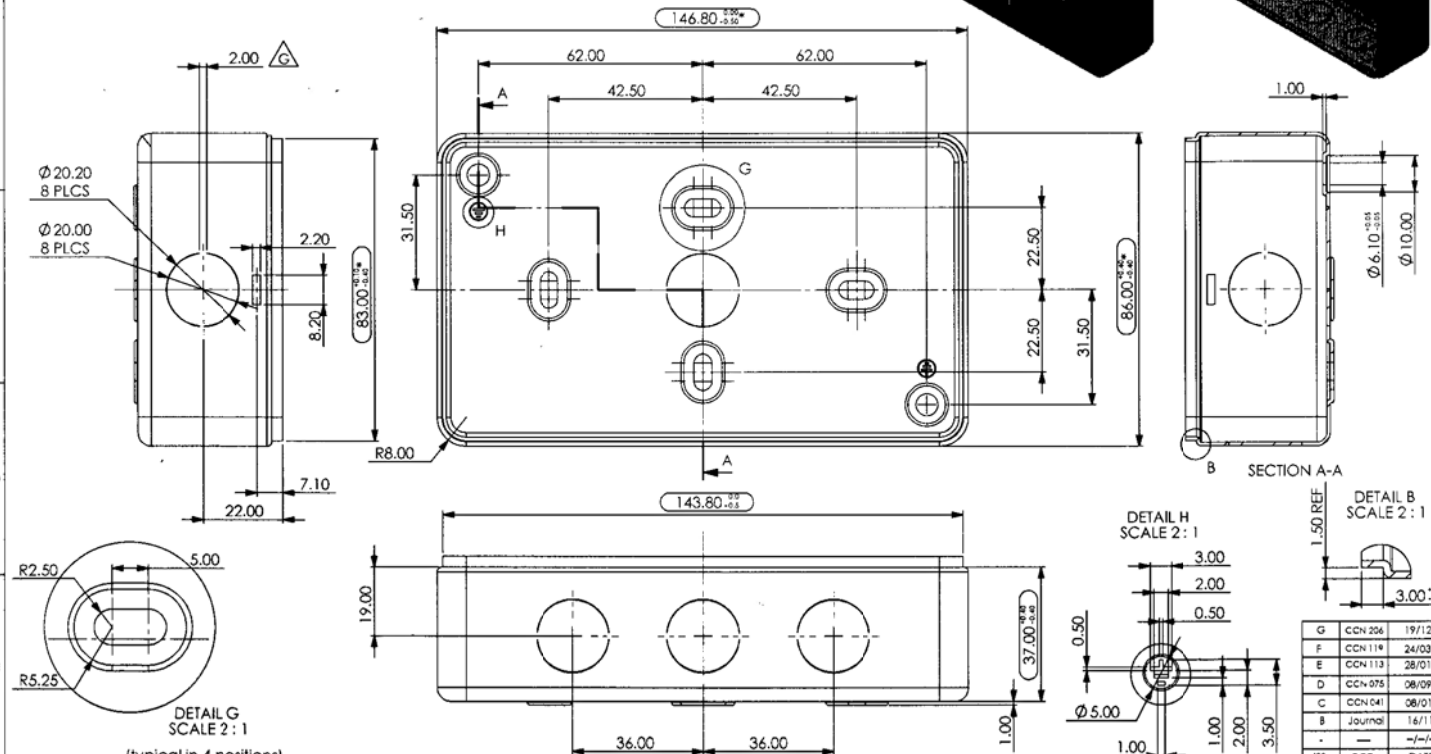
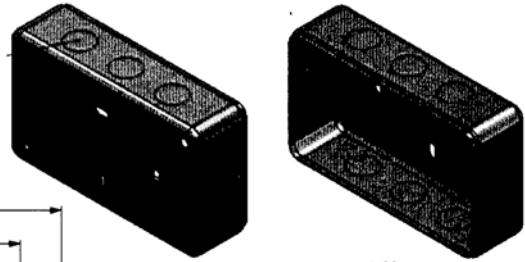


TITLE:
K22MPA Product Specification
GREENBROOK
WEST ROAD, HARLOW
ESSEX CM20 2BG UK

DWG NO.
GB400340
A3GB
SCALE: 1:1
DO NOT SCALE THIS DRAWING

DRAWN BY C.E
SHEET 3 OF 3

© AND/OR BY GREENBROOK ELECTRICAL P.L.C. CONCEPTS, STRICTLY PRIVATE AND CONFIDENTIAL. TO BE USED ONLY FOR THE PURPOSES INTENDED BY GREENBROOK ELECTRICAL P.L.C. OR ITS LICENSEE.
 ALL INTELLECTUAL PROPERTY AND INFORMATION IN THIS DRAWING AND ITS SUBJECT MATTER ARE RESERVED AND HEREBY UNCHECKED TO GREENBROOK ELECTRICAL P.L.C.



MATERIAL: SPCC 1.0mm
FINISH: See Notes
PROJECTION THIRD ANGLE. IF IN DOUBT ASK

TOLERANCES
 (UNLESS STATED OTHERWISE)
 +1 DEC PLACE ± 0.4
 -2 DEC PLACE ± 0.1
 - ANGULAR ± 1.0°

DRAFT CONSIDERATIONS
 (S) - SMALLEST DIMENSION
 (L) - LARGEST DIMENSION
 GENERAL - 1° PER SIDE ± 0.5°
ALL DIMENSIONS IN MILLIMETERS

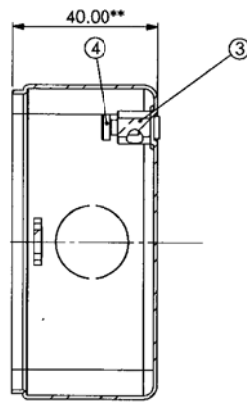
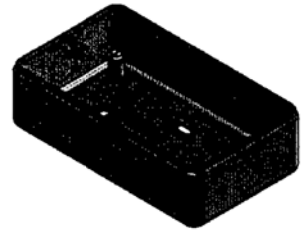


TITLE:
 Back Box
 GREENBROOK
 WEST ROAD, HARLOW
 ESSEX CM20 2BG UK

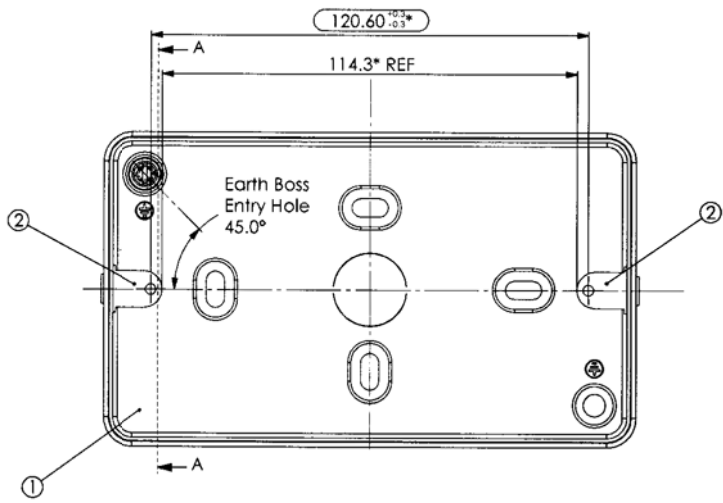
DWG NO: GB400072
SHEET 1 OF 1
DRAWN BY: C.E
SCALE: 1:1
DO NOT SCALE THIS DRAWING

| REV | DESCRIPTION | DATE |
|-----|-------------|----------|
| G | CCN 206 | 19/12/12 |
| F | CCN 118 | 24/03/11 |
| E | CCN 113 | 28/01/11 |
| D | CCN 075 | 08/09/10 |
| C | CCN 041 | 08/01/10 |
| B | Journal | 16/11/05 |
| | | -/-/- |
| ISS | CCD | DATE |

© AND DESIGN GREENBROOK ELECTRICAL PLC. CONTENTS STRICTLY PRIVATE AND CONFIDENTIAL. TO BE USED ONLY FOR THE PURPOSE NOTIFIED BY GREENBROOK ELECTRICAL PLC. OR BY LICENSEE.
 ALL INTELLECTUAL PROPERTY IN AND IN RELATION TO THIS DRAWING AND ITS SUBJECT MATTER ARE RESERVED AND HEREBY LICENCED TO GREENBROOK ELECTRICAL PLC.



SECTION A-A



| Item No. | Part Number | Description | Qty. |
|----------|-------------|-----------------------|------|
| 1 | GB400072 | Back Box | 1 |
| 2 | GB400073 | Lug Box | 2 |
| 3 | GB400071 | Earth Boss - Back Box | 1 |
| 4 | GB400089 | Terminal/Earth Screw | 1 |

| | | |
|-----|---------|------------|
| K | CCN 206 | 19-12-2012 |
| J | CCN 205 | 13-12-2012 |
| H | CCN 204 | 07-12-2012 |
| G | CCN 119 | 28-01-2011 |
| F | CCN 087 | 14-09-2010 |
| E | CCN 075 | 08-09-2010 |
| D | CCN 041 | 08-01-2010 |
| C | CCN001 | 06-08-06 |
| B | Journa | 09-11-2005 |
| - | - | -/-/- |
| ISS | CCD | DATE |

MATERIAL: See Notes
FINISH: See Notes
PROJECTION THIRD ANGLE. IF IN DOUBT ASK

TOLERANCES
 (UNLESS STATED OTHERWISE)
 - 1 DEC PLACE ± 0.4
 - 2 DEC PLACE ± 0.1
 - ANGULAR ± 1.0°

DRAFT CONSIDERATIONS
 (S) - SMALLEST DIMENSION
 (L) - LARGEST DIMENSION
 GENERAL - 1° PER SIDE ± 0.5°
ALL DIMENSIONS IN MILLIMETERS



TITLE
 Back Box Assembly
 GREENBROOK
 WEST ROAD, HARLOW
 ESSEX CM20 2BG UK

DWG NO. GB400069
SHEET 1 OF 2
DRAWN BY C.E
SCALE: 1:1 **DO NOT SCALE THIS DRAWING**