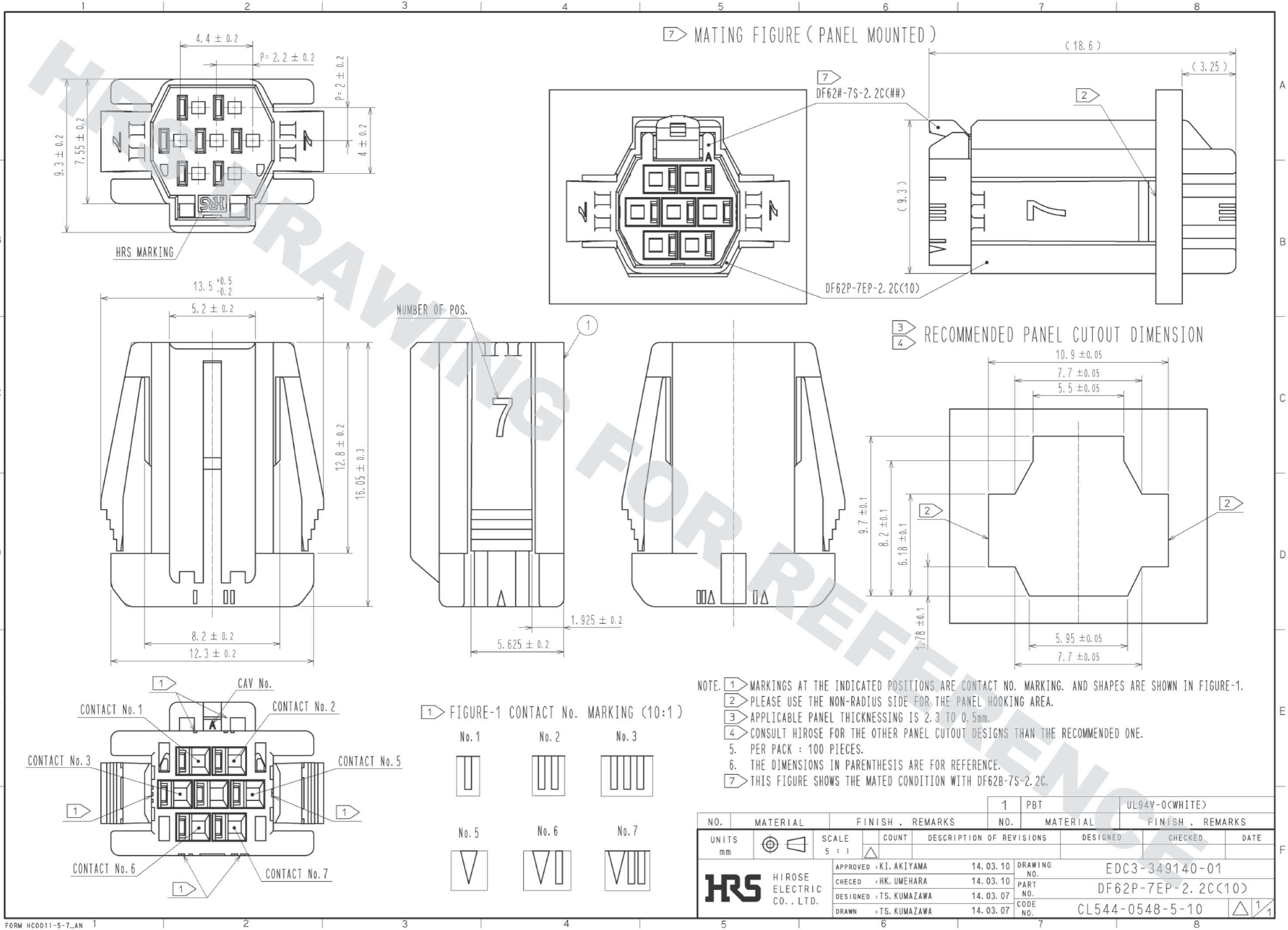
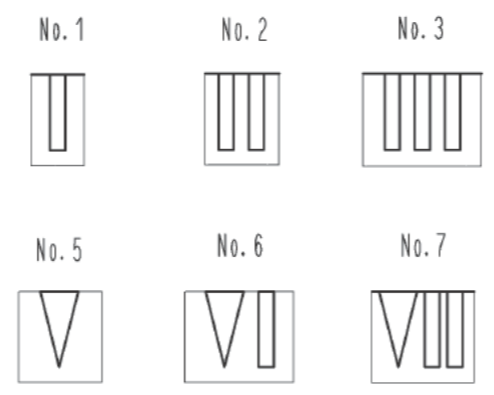


DRAWING FOR REFERENCE: This is subject to change without notice  
05/31/2014



NOTE. ① MARKINGS AT THE INDICATED POSITIONS ARE CONTACT NO. MARKING. AND SHAPES ARE SHOWN IN FIGURE-1.  
 ② PLEASE USE THE NON-RADIUS SIDE FOR THE PANEL HOOKING AREA.  
 ③ APPLICABLE PANEL THICKNESS IS 2.3 TO 0.5mm.  
 ④ CONSULT HIROSE FOR THE OTHER PANEL CUTOUT DESIGNS THAN THE RECOMMENDED ONE.  
 ⑤ PER PACK : 100 PIECES.  
 ⑥ THE DIMENSIONS IN PARENTHESIS ARE FOR REFERENCE.  
 ⑦ THIS FIGURE SHOWS THE MATED CONDITION WITH DF62B-7S-2.2C.

① FIGURE-1 CONTACT No. MARKING (10:1)



NO.	MATERIAL	FINISH	REMARKS	NO.	MATERIAL	FINISH	REMARKS		
1	PBT			1	PBT		UL94V-0(CWHITE)		
UNITS	mm	SCALE	5 : 1	COUNT	△	DESCRIPTION OF REVISIONS	DESIGNED	CHECKED	DATE
<b>HRS</b> HIROSE ELECTRIC CO., LTD.		APPROVED	: KI. AKIYAMA	14.03.10	DRAWING NO.	EDC3-349140-01			
		CHECKED	: HK. UMEHARA	14.03.10	PART NO.	DF62P-7EP-2.2C(10)			
		DESIGNED	: TS. KUMAZAWA	14.03.07	CODE NO.	CL544-0548-5-10			
		DRAWN	: TS. KUMAZAWA	14.03.07		△ 1/1			