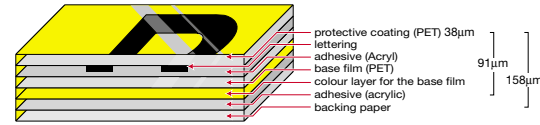




**Tape Colours**

Brother's unique, patented TZ tapes are designed to be extra hard wearing. Tests have shown that they can withstand heavy abrasion, electrical resistance and lengthy exposure to chemicals, sunlight, water and extreme temperatures. Brother laminated tapes consist of six layers of materials, resulting in a thin, extremely strong label. Characters formed with thermal transfer ink are actually printed onto the underside of the laminate. Sandwiched between two layers of PET (polyester film) this lets you create characters that are virtually indestructible.



**Brother Laminated Tape Construction**

Brother TZ tapes have a unique construction comprising of six layers of material. These scratch-proof labels can resist temperatures from -50°C to 300°C.

**Tape options**

- Options include standard laminated tape including fluorescent and transparent options. Specialist tapes include Non-laminated, Matt, Strong Adhesive, Security Tape, and Flexi ID. All are available in varying widths, character and tape colour options.
- Tape widths of 6, 9, 12, 18 and 24mm
- Standard tape length of 8m\*

\*Providing approximately 100 labels (based on 10 characters & standard label length 8cm)

**Technical Information**

Hardware		Firmware	
<b>Housing Dimensions</b>	117(W) x 239(D) x 81(H) (mm)	<b>Number of Lines</b>	Max. 7 lines
<b>Housing Design</b>	Handheld	<b>Number of Blocks</b>	Max. 50 blocks
<b>Housing Weight</b>	610g	<b>Text Buffer</b>	Approx. 500 chr.
<b>Housing Colour</b>	Orange (Pantone144C)	<b>Max. Label Length</b>	1 m
<b>Key Board</b>	Rubber, ABCD and Numeric keys	<b>Repeat Printing</b>	1 - 99
<b>Number of Keys</b>	56 (55 + On/Off key)	<b>Auto Numbering</b>	1 - 99
<b>Cutter</b>	Manual Cutter and Tape Cut Pause	<b>Mirror Printing</b>	Yes
<b>Power Supply</b>	6 x AA Type Alkaline 6 x AA Rechargeable Batteries AC-Adapter (Type : Model-H1)	<b>Font</b>	Helsinki
<b>LCD</b>	16 Chrs x 2 line	<b>Type Sizes</b>	8
<b>Tape Type</b>	TZ Tape	<b>Type Styles</b>	Bold / Outline / Italic / Italic bold / Italic outline
<b>Tape Size</b>	6, 9, 12, 18, 24mm	<b>Frames</b>	15
<b>Print Head</b>	180 dpi	<b>Pre-formatted Label Templates</b>	10
<b>Print Height</b>	18.1mm	<b>Layout Preview</b>	Yes
<b>Print Speed</b>	10 mm / sec.	<b>Memory</b>	Approx. 2,000 chr.
<b>Interface</b>	USB 1.1 (Transfer Only)	<b>Bar Code Settings</b>	CODE39 / I-2/5 / EAN13 / EAN8 / UPC-A / UPC-E / CODABAR / EAN128 / CODE128
		<b>Template Download</b>	Yes
		<b>Database Download</b>	Yes
		<b>Upgradable Software</b>	Yes
		<b>Backup Capability</b>	Yes
		<b>Cutter System</b>	Tape Cut Pause Function and Optional Chain Printing
		<b>Auto Power Off</b>	Yes (5 minutes)
		<b>Battery Weak Indication</b>	Yes
		<b>Label Types</b>	NORMAL, ROTATE&REPEAT, PORT, PANEL, VERTICAL, FLAG
Firmware		Firmware	
<b>CD Includes</b>	P-touch Editor Version 3.2 for Windows, P-touch Transfer Manager, P-touch Backup Manager	<b>Operating System</b>	Microsoft® Windows® 98/98SE/Me/2000Pro/XP
<b>Operating System</b>	Microsoft® Windows® 98/98SE/Me/2000Pro/XP	<b>Languages</b>	English / French / German / Dutch / Norwegian / Swedish / Italian / Danish / Spanish

Contact:



**Brother International Europe Ltd**  
 Brother House, 1 Tame Street, Audenshaw, Manchester M34 5JE  
 Tel: +44 (0)161-330 6531 Fax: +44 (0)161-330 5520  
 Web-site: www.brother.com

All specifications correct at time of printing. Brother is a registered trademark of Brother Industries Ltd. Brand product names are registered trademarks or trademarks of their respective companies.



Brother P-touch 2480

NOW WITH  
**USB**  
 CONNECTIVITY



Always at your side

The LCD screen allows you to preview font styles and sizes, width, style, frames, alignment, margins and length, so you can customise your label before you decide to print.

Tapes can be cut manually to any length whilst the tape cut pause function makes printing the same label several times so much easier.

USB connectivity port can link your P-touch 2480 to your laptop or PC, opening endless possibilities in terms of label design. You can create labels on your PC or laptop and download them to your P-touch 2480, for use when you need them.

Robust rubber casing remains intact even when changing tapes or batteries. So if ever it is knocked or dropped the machine is protected and still immediately ready for action.



## The P-touch 2480 from Brother.

Portable and durable, this is the labeller for industry, the warehouse and electrics. Tough working environments not only need labels that last, they need a labelling machine that can go everywhere and take the knocks. The handheld, robust P-touch 2480 delivers on every front.

### Go Anywhere Take on Anything

The P-touch 2480 is a durable labelling machine designed to stand up to rigorous demands. Whatever you want to label, the P-touch 2480 makes it easy. The functions have been created specifically for labelling

### Portable

The light handheld machine is compact and easy to use, producing clear, readable labels to last in tough conditions. And it's supplied in a practical carry case for easy transportation.

- CABLES
- TERMINAL BLOCKS
- SHELVING
- TOOLS
- SIGNAGE
- MACHINERY
- COMPUTER HARDWARE
- DATACOMM EQUIPMENT
- SAFETY AND ELECTRICAL EQUIPMENT

## Speed And Versatility

### Industrial labels

With over 450 accents, symbols and characters to chose from, you'll be able to create long lasting durable labels to suit your all professional requirements. In addition, nine of the most common bar codes are included as standard.

### Customised labels

Customise your labels to meet your needs with the wide choice of fonts, frames and margins. You can even create labels featuring symbols, logos and images.

### Print options

The machine has wide range of print options, such as rotate and repeat, panel, vertical and mirror printing. It means everything from the thinnest wire to the thickest pipe can be labelled clearly and complex switchboards and datacom applications can be tackled with confidence. The specially designed templates, for labelling terminals, cables, patchpanels and connectors, make labelling anything easy.

### Memory function

Text, formats and templates can be saved so those often-used labels can be reproduced whenever they are required.

## Enhancing Performance

### Software

The P-touch 2480 is provided with P-touch editor version 3.2 for windows. This easy-to-use software means that you can create and edit labels before downloading them to your machine.



### b-PAC software

Brother can also supply a Windows® Software Development Kit, b-PAC, which opens up even more possibilities for your labelling skills. This gives computer programmers the tools and resources needed to enable printing of labels directly from custom software, or from within the Microsoft® Office suite of applications such as Microsoft® Access and Excel. The programmer uses b-PAC to produce a system bespoke to you, which means that you wont have to learn how to use another software package. Further information and downloads can be found at: [www.p-touchsolutions.com](http://www.p-touchsolutions.com).

### Instant labels

With a print speed of 10mm per second, you can produce the labels you need in an instant.

### Versatile labels

Tape widths from 6mm to 24mm, so you can select the right label for the right environment, and with the ability to print up to 7 lines of text, your labels can contain all the detail you need.

## Long Lasting Labels

### Brother laminated tapes

Brother TZ tapes have a unique construction comprising of six layers of material. No other labels offer such levels of resistance and wear. These labels are able to withstand heavy abrasion, electrical resistance, lengthy exposure to chemicals, sunlight, water and temperatures from -50°C to 300°C.

## Always at your side



Panel



Flag



Bar code



Rotate and repeat

