

Rittal – The System.

Faster – better – everywhere.

Hygienic Design Terminal boxes HD – HD 1671.600

Date : Feb 16, 2016

ENCLOSURES

POWER DISTRIBUTION

CLIMATE CONTROL

IT INFRASTRUCTURE

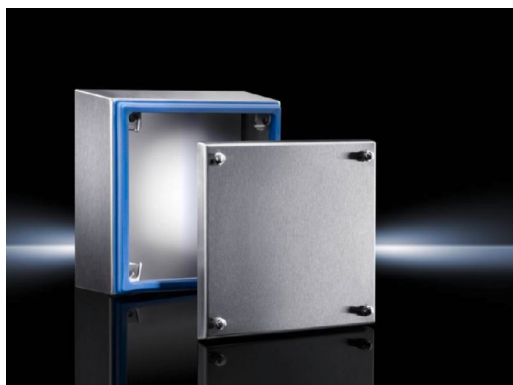
SOFTWARE & SERVICES

FRIEDHELM LOH GROUP



Hygienic Design Terminal boxes HD – HD 1671.600

erstellt am : 16.02.2016 build on www.rittal.com/uk-en



Product description

Material: Enclosure and cover: Stainless steel 1.4301 (AISI 304) 1.5 mm
Mounting bracket: Sheet steel, zinc-plated, passivated, 2.0 mm
Screw plug: Stainless steel
Seal: Silicone, compliant with FDA Guideline 21 CFR 177.2600

Surface finish: Enclosure and cover: Brushed, grain 400, peak-to-valley height < 0.8 µm
Seal: Blue, dyed (RAL 5010)

**Protection category
IP to IEC 60 529:** IP 66

**Protection category
IP to DIN 40 050-9:** IP 69K

**Protection category
NEMA:** NEMA 13
NEMA 3R
NEMA 4X

Supply includes: Enclosure of all-round solid construction
Cover
Mounting bracket (pre-assembled)
Seal and screw plug (supplied loose)

Packs of: 1 pc(s).

EAN: 4028177639744

**Customs tariff
number:** 94032080

eCl@ss 5.1: 27180102

eCl@ss 7.0: 27180101

ETIM 6.0: EC002713

Product features

Dimensions: Width (front): 150 mm
Width (rear): 177 mm
Height (front): 150 mm
Height (rear): 177 mm
Depth: 120 mm

Weight/pack: 2.15 kg

Approvals

Approvals:  [UL + C-UL \(EN\)](#)

Certificates:  [DGVV](#)
EN

Declarations:  [Declaration of conformity \(DE\)](#)
 [Manufacturer's declaration \(EN, DE\)](#)

Downloads

Data sheets:  [Technical details](#)
EN

Documentation:  [Instructions \(EN, DE\)](#)

CAD drawings: Request

Please note that there are the following alternative products:



Terminal boxes KL without gland plate

Weitere Informationen zu diesem Produkt

www.rittal.com/uk-en/Terminal_boxes_KL_without_gland_plate



Terminal boxes KL Stainless steel

Weitere Informationen zu diesem Produkt

www.rittal.com/uk-en/Terminal_boxes_KL_Stainless_steel