

## Datasheet

Art.No. R1.188.0530.1

Two-hand control relay SNZ4052K-A AC/DC 24V (B)

Base unit, two-channel control, 2x N.C./N.O. startup inhibit circuit, cross circuit monitoring, synchronous time monitoring, 2 enabling current paths, 1 signalling output, AC/DC 24 V 50-60Hz, screw-terminals pluggable



Art.No.	R1.188.0530.1
EAN	4015573808515
Order unit	1 pieces

## Approvals



## Technical data

### General

Function display	3 LED, green
Creepage distances and clearances between the circuits	EN 60664-1
Protection degree according to DIN EN 60529 (housing)	IP40
Protection degree according to DIN EN 60529 (terminals)	IP20
Ambient temperature min.	-25 °C
Ambient temperature max.	55 °C
Wire ranges screw terminals, fine-stranded / solid	1 x 0,14 mm <sup>2</sup> - 2,5 mm <sup>2</sup> / 2 x 0,14 mm <sup>2</sup> - 0,75 mm <sup>2</sup>
Wire ranges screw terminals, fine-stranded with ferrules	1 x 0,25 mm <sup>2</sup> - 2,5 mm <sup>2</sup> / 2 x 0,25 mm <sup>2</sup> - 0,5 mm <sup>2</sup>
Permissible torque min.	0.5 Nm
Permissible torque max.	0.6 Nm
Tightening moment	0.6 Nm
Wire range cage clamp terminals	2 x 0,25mm <sup>2</sup> - 1,5mm <sup>2</sup>
Weight	0.2 kg
Standards	EN ISO 13849-1;EN 62061;EN 574
Suited for safety functions	Yes
Category according to EN ISO 13849-1	4
Feedback circuit	Yes
Start contact	No
Performance level acc. to EN ISO 13849-1	e
SIL according to IEC 62061	3
Rail mounting possible	Yes
Applicable in accordance with EN 574	Type III C

### Connection Data

Detachable clamps	Yes
Type of electric connection	Screw connection

### Output circuit

Enabling paths	Normally open contact
Signaling paths	Opener
Contact material	Ag-alloy, gold-plated
Rated switching voltage, enabling paths AC	230 V
Max. thermal current I <sub>th</sub> , enabling paths	6 A
Max. thermal current I <sub>th</sub> , signaling paths	2 A
Max. total current I <sub>z</sub> of all current path	9 A <sup>2</sup>
Application category AC-15 (NO)	Ue 230V, Ie 3A
Application category DC-13 (NO)	Ue 24V, Ie 2,5A
Short-circuit protection (NO), max. fuse insert	6 A class gG fuse, fuse integral
Mechanical life	107 switching cycles
Outputs, signalling function, undelayed, with contact	1
Outputs, signalling function, delayed, with contact	0
Outputs, safe, undelayed, with contact	2
Outputs, safe, delayed, with contact	0

### Control circuit

Nominal output voltage DC	24 V
Input current (safety circuit / reset circuit)	60 mA
max. peak current (safety circuit / reset circuit)	1000 mA
Response time tA1	40 ms
Response time tA2	40 ms
Recovery time tW	250 ms
Release time tR	50 ms
Synchronous time tS	500 ms
max. resistivity, per channel	≤ (5 + (1,333 x U <sub>B</sub> / U <sub>N</sub> - 1) x 200) Ω
Type of switch function of the inputs	Change-over contact

### Supply circuit

Nominal voltage U <sub>N</sub>	AC/DC 24 V
Rated consumption DC	2.4 W
Rated frequency min.	50 Hz
Rated frequency max.	60 Hz
Electrical isolation supply circuit - control circuit	yes (at U <sub>N</sub> = AC 115-230 V, AC 230 V)
Min. rated control supply voltage at AC 50 Hz	20.4 V
Max. rated AC voltage for controls, 50 Hz	26.4 V
Min. rated DC voltage for controls	20.4 V
Max. rated DC voltage for controls	26.4 V
Min. rated control supply voltage at DC	20.4 V
Rated control supply voltage at AC 60HZ	20.4 V
Rated control supply voltage at AC 50HZ	26.4 V

### Dimensions

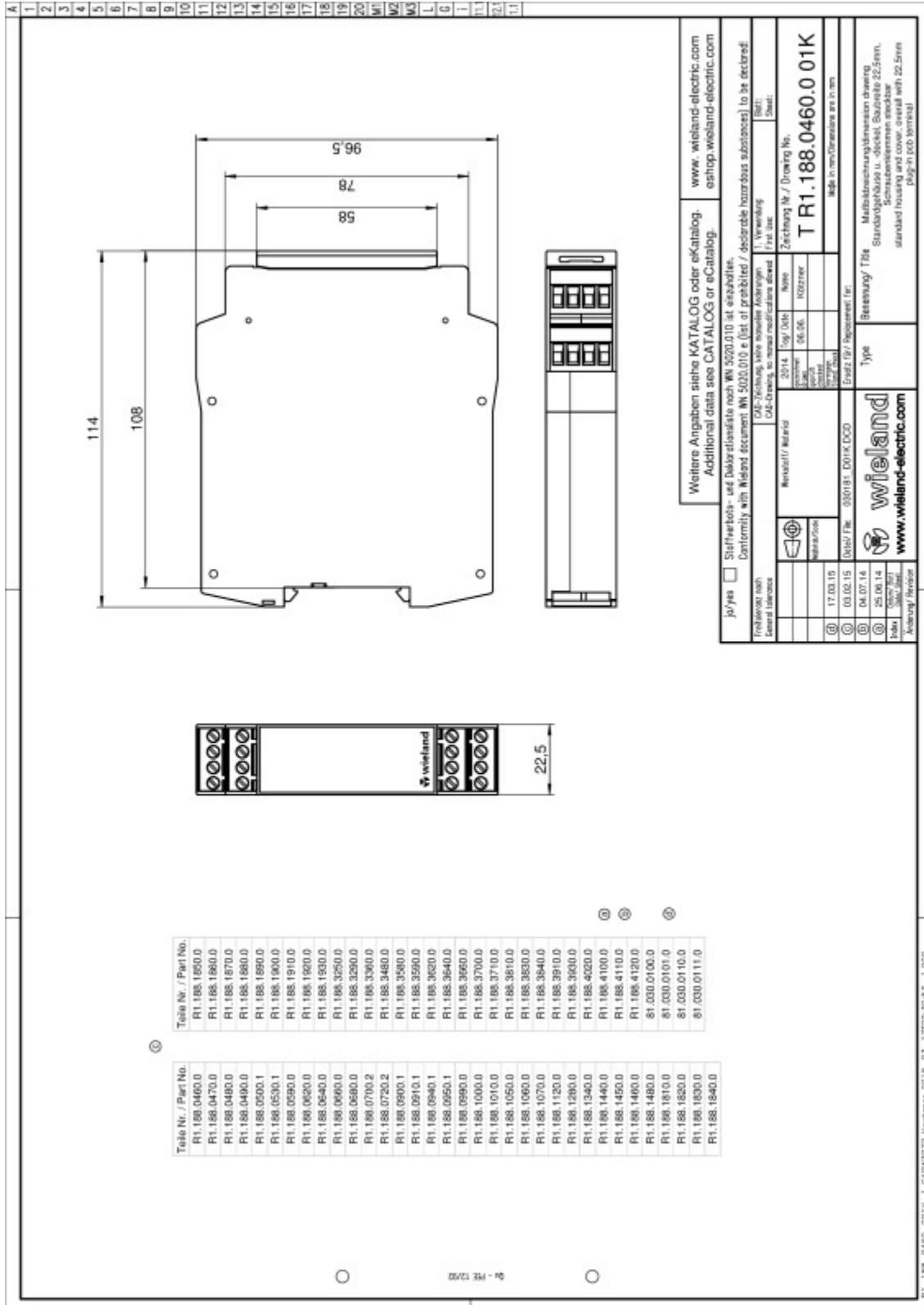
Depth	114 mm
Width	22.5 mm
Height	96.5 mm

### Classification

ECLASS 8.1	27371821: Two-hand control relay
------------	----------------------------------

ETIM 5.0	EC001452: Two-hand control relay
ETIM 4.0	EC001452: Two-hand control relay
ETIM 3.0	EC001452: Two-hand control relay

Drawings



R1.188.0460.001K\_1 CADW3072 Revisieren 2015-03-17 10:29:30.53 1.000