



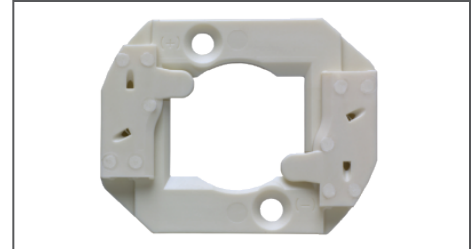
Ideal for OEM light-fixture manufacturers, Molex LED Array Holders feature superior electrical performance in a low-profile, one-piece design and simplify the installation process for next-generation Nichia COB-L arrays by eliminating hand soldering

LED technology has been proven to reduce the amount of energy consumed and is becoming a more reliable, efficient and user-friendly way for accommodating general illumination requirements. Using unmatched interconnect technology, Molex provides a solderless solution to mounting LED arrays into OEM fixtures. Ideal for OEM light-fixture manufacturers, Molex

LED Array Holders feature superior electrical performance in a low-profile, one-piece design and simplify the installation process for next-generation Nichia COB-L arrays by eliminating hand soldering LED array holders simplify the LED installation process by eliminating the need for hand or SMT soldering and expensive SMT equipment. The holders allow customers to install LED arrays quickly into fixtures, enable field replacements and facilitate upgrades to current applications.

LED Array Holder for Nichia COB-L110 and COB-L110-H3 Arrays

180580 LED Array Holder for Nichia COB-L110 and COB-L110-H3 Arrays



LED Array Holder for Nichia COB-L110 and L110-H3 Arrays

Features and Benefits

Concealed wire trap design	Protects electrical contacts and provides additional voltage isolation when incorporating metal reflectors
Optical Clearance Area (OCA) area around Light Emitting Surface (LES)	Provides maximum area for easy addition of secondary optics. Provides electrical and thermal connection without interrupting light output or beam angle
4.10mm low-profile design	Provides design flexibility for many applications
Compression contact deliver power to array	Ensures stable connection in high-ambient temperatures. Simplifies the LED installation process by eliminating hand soldering or expensive Surface Mount Technology (SMT) equipment. Reduces installation time
Double-ended wire-trap terminal to attach power source	Allows for wiring serial or parallel LED sequences, ensuring ease of array assembly
Screw-mount attachment method for securing array to heat sink	Provides voltage isolation between LED and heat sink with external mounting holes
Releasable wire trap for rework or replacement	Allows for field serviceability
High-temperature thermoplastic housing	Supports high heat-generating environments

LED Array Holder for Nichia COB-L110 and COB-L110-H3 Arrays

Specifications

Reference Information

Packaging: Tray
 UL File No.: Pending
 CSA File No.: Pending
 Designed In: Millimeters
 RoHS: Yes
 REACH SVHC: Contains SVHC: No

Electrical

Voltage (max.): 600V DC
 Current (max.): 2.5A continuous; 3.5A
 Contact Resistance (max.):
 20 milliohms
 Dielectric Withstanding Voltage:
 300V DC
 Insulation Resistance(min.):
 5000 Megohms

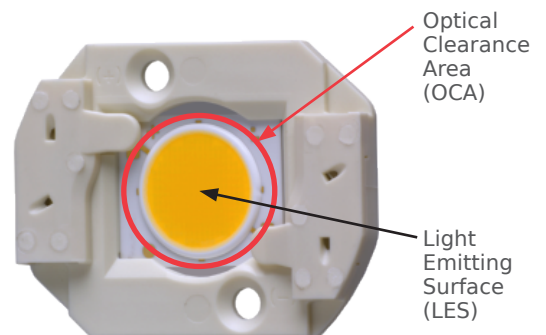
Mechanical

Wire Insertion Force (max.): 5N
 Wire Pull Out Force (max.): 30N
 Durability (min.): 5 Cycles

Physical

Housing:
 PA66 Nylon 25% Glass fill UL94V-0
 Contact:
 Copper (Cu) Alloy, Nickel (Ni) and
 Gold (Au)
 Plating:
 Contact Area — Gold (Au)
 Underplating — Nickel (Ni)

Designed exclusively to fit Nichia LED Arrays (L110 and L110-H3)
 Optical Clearance Area (OCA) area around Light Emitting Surface (LES)
 provides larger area for easy addition of secondary optics



Applications

All general illumination applications

- Downlighting
- Track
- Pendants
- Linear

Areal Lighting

- Roadways
- Parking Lots
- Wall Packs



Recessed downlighting in residential and commercial buildings

Ordering Information

Order No.	Product Description	Mounting Method	Releasable Wire Trap	Optical Attachment
180580-0001	LED Array Holder for Nichia COB-L Series Arrays with Gold (Au) Plating, One-Piece Design	M3 Screw	Yes	Yes

www.molex.com/link/ledholdernichia.html
www.molex.com/industry/solidstatelighting.html