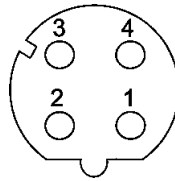


# M12 Panel feed-through D-coded



Mating face



D-coding  
Mating face  
acc. to IEC 61076-2-101



Identification

Part No.

Drawing

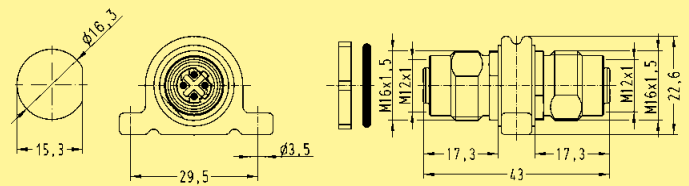
Dimensions in mm

M12 Gender Changer  
Female-Female



4 poles, D-coding  
Cat. 5

21 03 381 6405

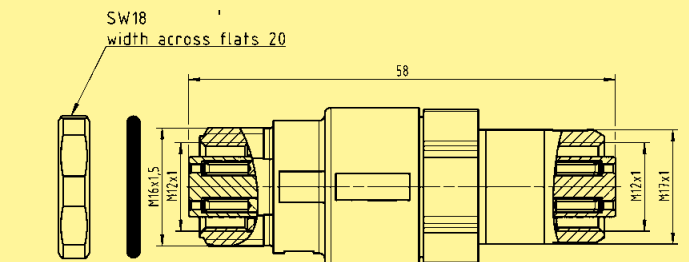


M12 Gender Changer  
Female-Female

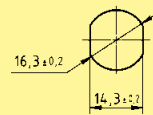


4 poles, D-coding  
Cat. 5

21 03 381 6401\*



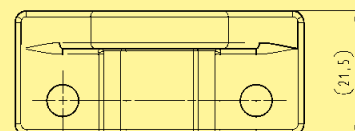
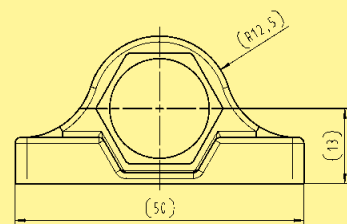
Panel cut out  
(1:1)



Wall bracket



21 01 000 0036



03

03  
85