

**Ordering number CN12296\_LENA-S-DL**

Family	Lena	FWHM	12 degrees
Type	Pack	Efficiency	77 %
LED	LUXEON CoB 1204/1205	cd/lm	7.300
Color	Metal	Gerber File	Available
Diameter	111 mm		
Height	85.6 mm		
Style	Round		
Optic Material	PC		
Holder Material	PC		
Fastening	Screw		
Status	On production		

**Ordering number CN12297\_LENA-M-DL**

Family	Lena	FWHM	21 degrees
Type	Pack	Efficiency	74 %
LED	LUXEON CoB 1204/1205	cd/lm	3.400
Color	Metal	Gerber File	Available
Diameter	111 mm		
Height	85.6 mm		
Style	Round		
Optic Material	PC		
Holder Material	PC		
Fastening	Screw		
Status	On production		

**Ordering number CN12298\_LENA-W-DL**

Family	Lena	FWHM	44 degrees
Type	Pack	Efficiency	68 %
LED	LUXEON CoB 1204/1205	cd/lm	1.200
Color	Metal	Gerber File	Available
Diameter	111 mm		
Height	85.6 mm		
Style	Round		
Optic Material	PC		
Holder Material	PC		
Fastening	Screw		
Status	On production		

**NOTE: The typical divergence will be changed by different color, chip size and chip position tolerance. The typical total divergence is the full angle measured where the luminous intensity is half of the peak value.**



## PRODUCT DATASHEET

### Lena series

last update 18/6/2013

PHILIPS  
LUMILEDS

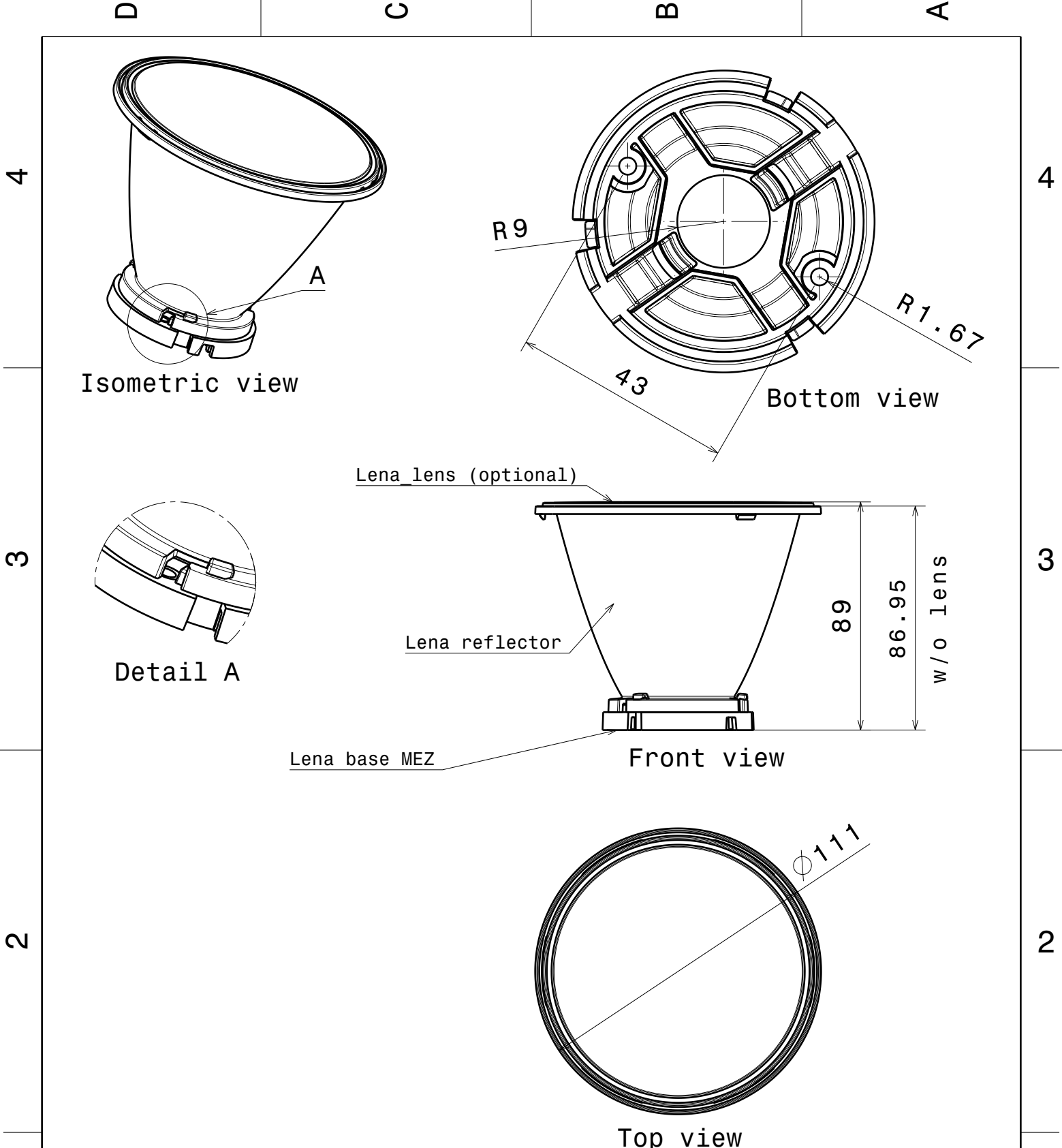
#### GENERAL INFORMATION

- Product series especially designed & optimized for LUXEON CoB 1204/1205 series of LEDs.
- Special care taken to make light distribution as uniform as possible.
- Lens material optical grade PC with high UV and temperature resistance (120 degrees of Celcius / 248 degrees of Fahrenheit). Allows use of high current and temperature conditions.

Please find more information about used materials from below:

[http://ledil.fi/sites/default/files/Documents/Technical/Material/PC%20Makrolon%202400\\_2407\\_2456\\_2458-UL.pdf](http://ledil.fi/sites/default/files/Documents/Technical/Material/PC%20Makrolon%202400_2407_2456_2458-UL.pdf)

- Reflector is made of aluminium coated PC (120 degrees of Celcius / 248 degrees of Fahrenheit) with protective lacquer (110 degrees of Celcius / 230 degrees of Fahrenheit).
- Optic holder molded by high quality PC material (120 dergees of Celcius / 248 degrees of Fahrenheit).



This drawing is our property. It can't be reproduced or communicated without our written agreement.



Ledil Oy  
 Salorankatu 10  
 FIN-24100 SALO  
 Finland

DRAWING TITLE

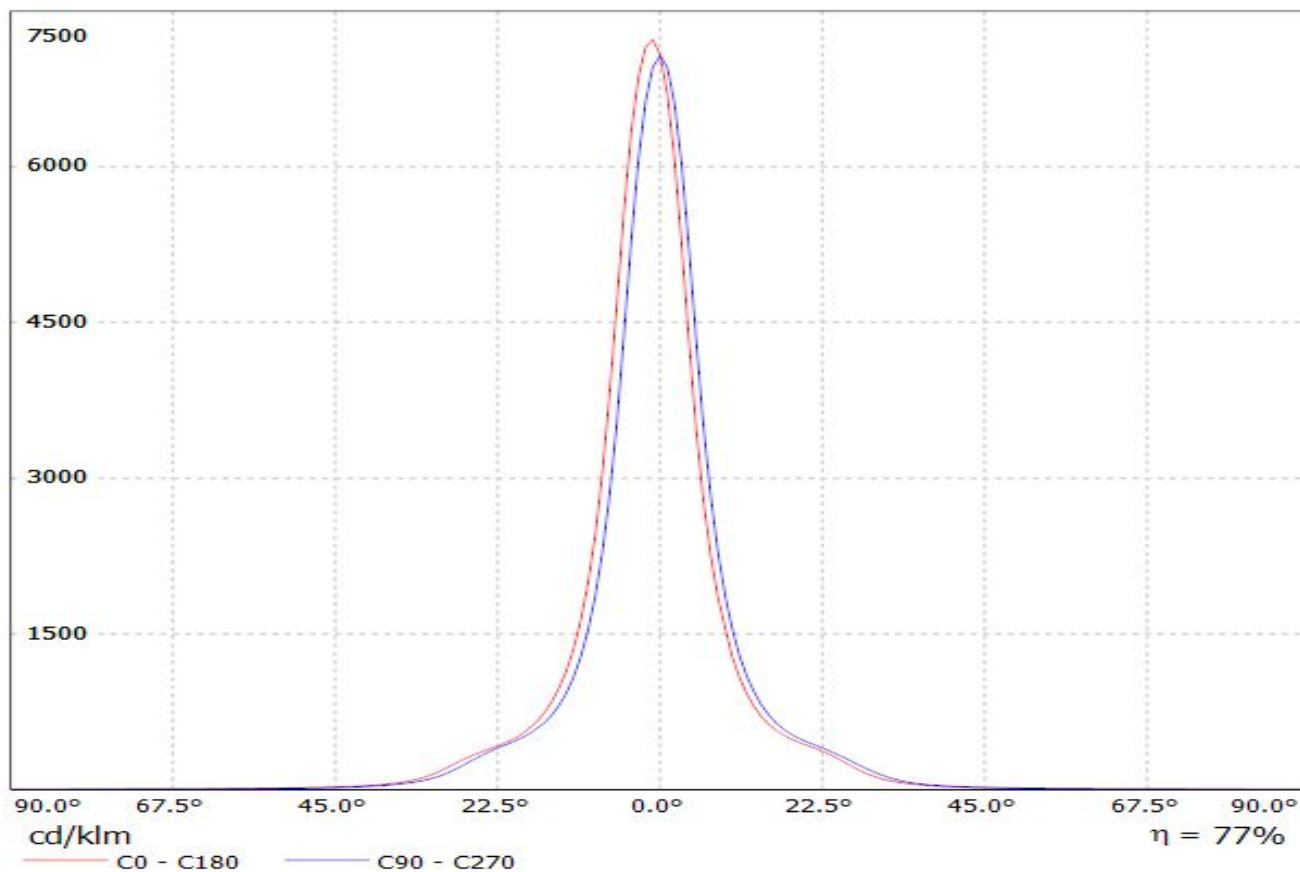
Datasheet Lena-MEZ

DRAWN BY ah	DATE 14.12.2012	DRAWING TITLE Datasheet Lena-MEZ		
CHECKED BY pl	DATE 14.12.2012	SIZE A4	DRAWING NUMBER -	REV 2
DESIGNED BY pl	DATE 14.12.2012	SCALE 1:2	WEIGHT (g)	SHEET 1/1

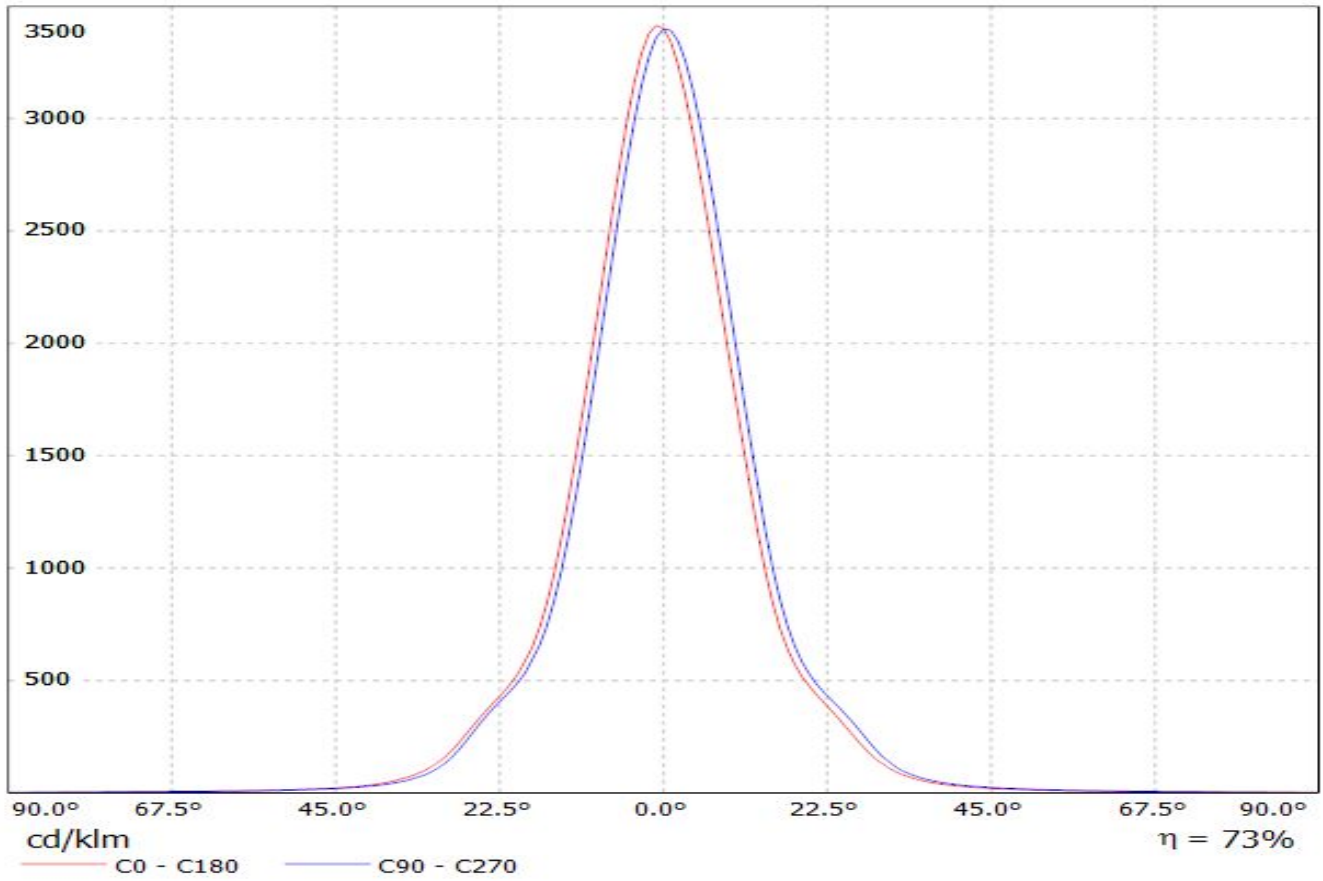
D

A

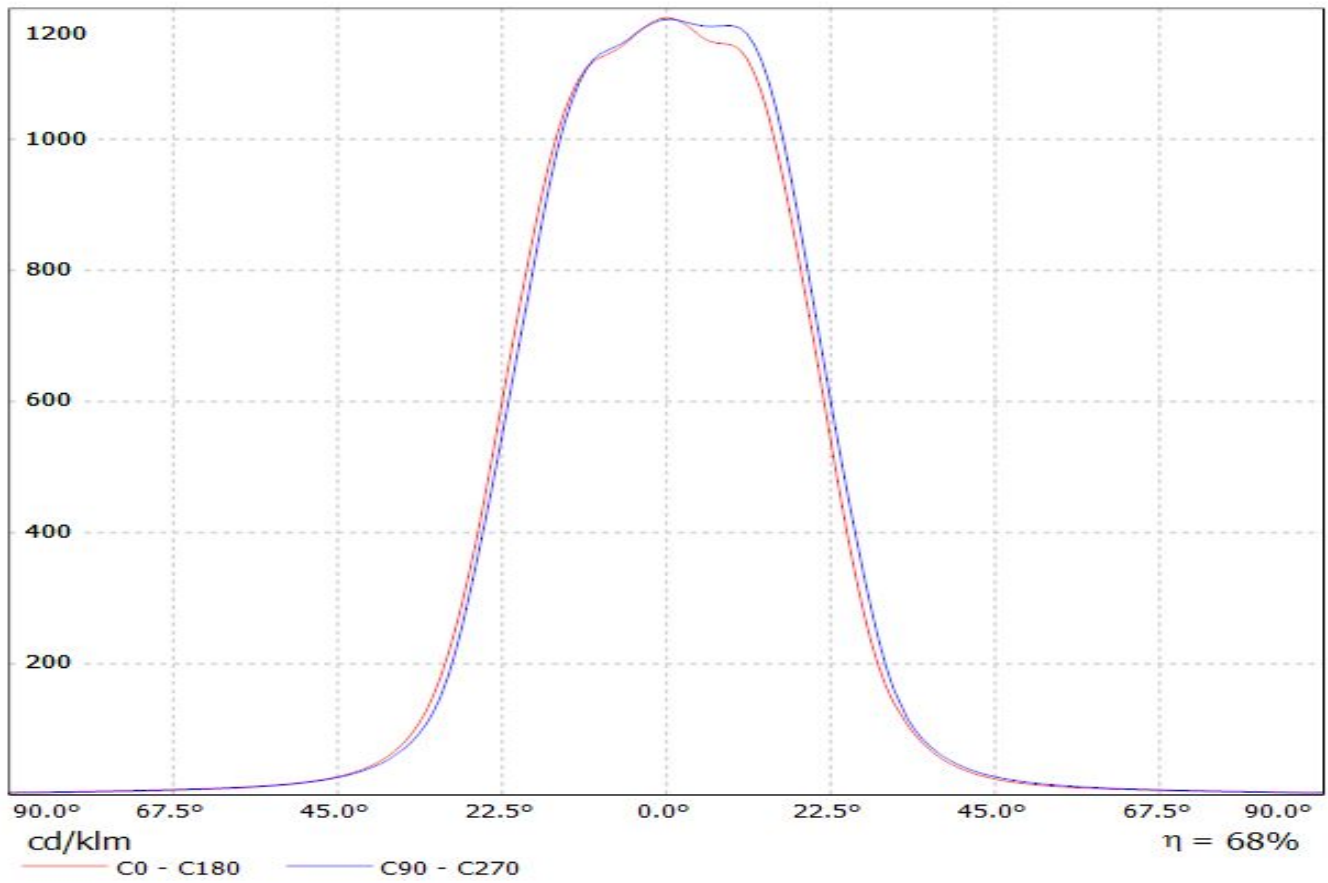
Luminaire: LEDiL Oy CN12296\_LENA-S-DL (LUXEON CoB\_1205) Eff: 77 %  
Lamps: 1 x LUXEON CoB 1205 (LHC1-3080-1205) 1106lm@250mA CCT=3000K P=8.3W I=250mA



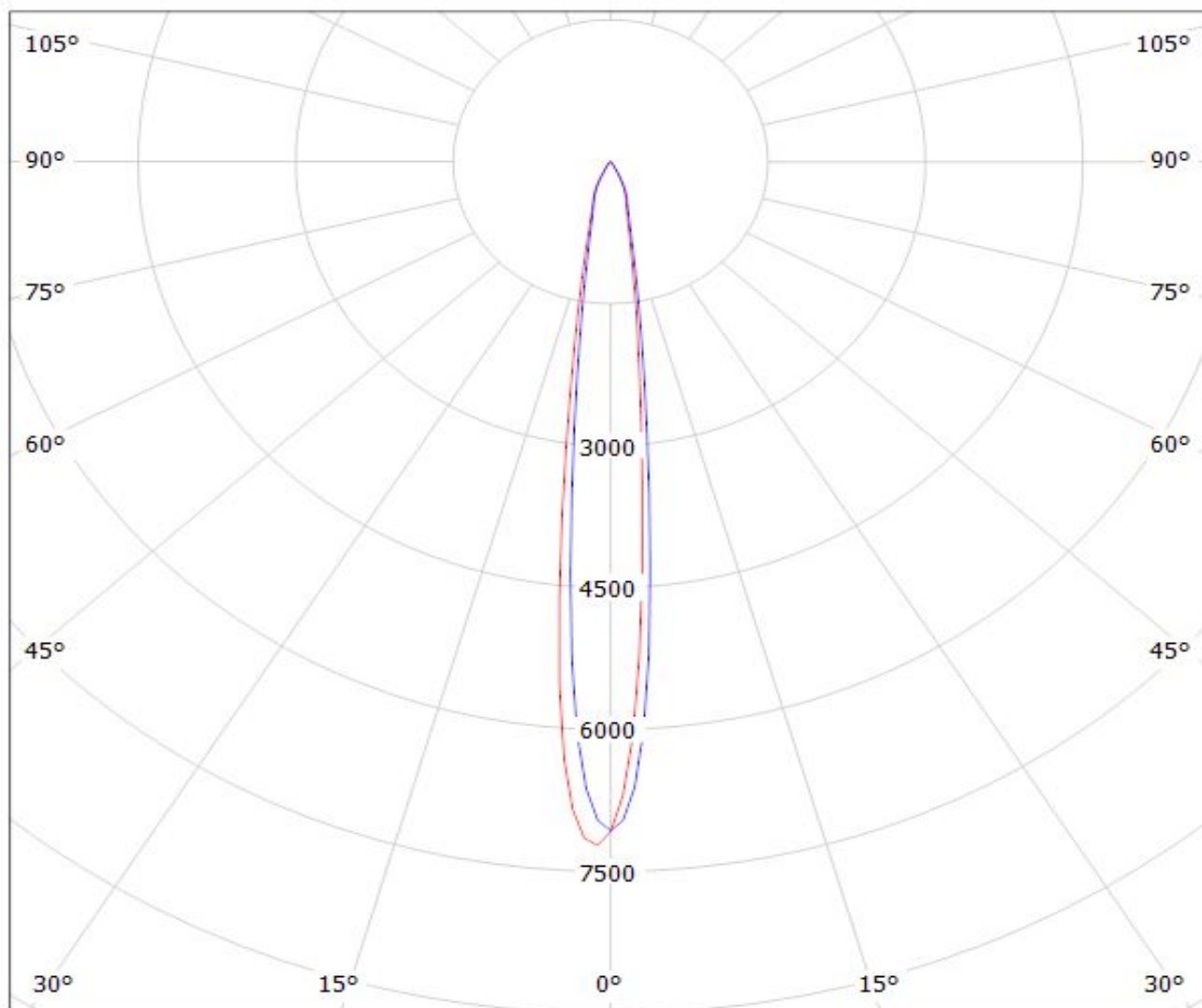
Luminaire: LEDiL Oy CN12297\_LENA-M-DL\_(LUXEON\_CoB\_1205) Eff: 74 %  
Lamps: 1 x LUXEON CoB 1205 (LHC1-3080-1205) 1106lm@250mA CCT=3000K P=8.3W I=250mA



Luminaire: LEDiL Oy CN12298\_LENA-W-DL\_(LUXEON\_CoB\_1205) Eff. 68%  
Lamps: 1 x LUXEON CoB 1205 (LHC1-3080-1205) 1106lm@250mA CCT=3000K P=8.3W I=250mA



Luminaire: LEDiL Oy CN12296\_LENA-S-DL\_(LUXEON\_CoB\_1205) Eff: 77 %  
Lamps: 1 x LUXEON CoB 1205 (LHC1-3080-1205) 1106lm@250mA CCT=3000K P=8.3W I=250mA



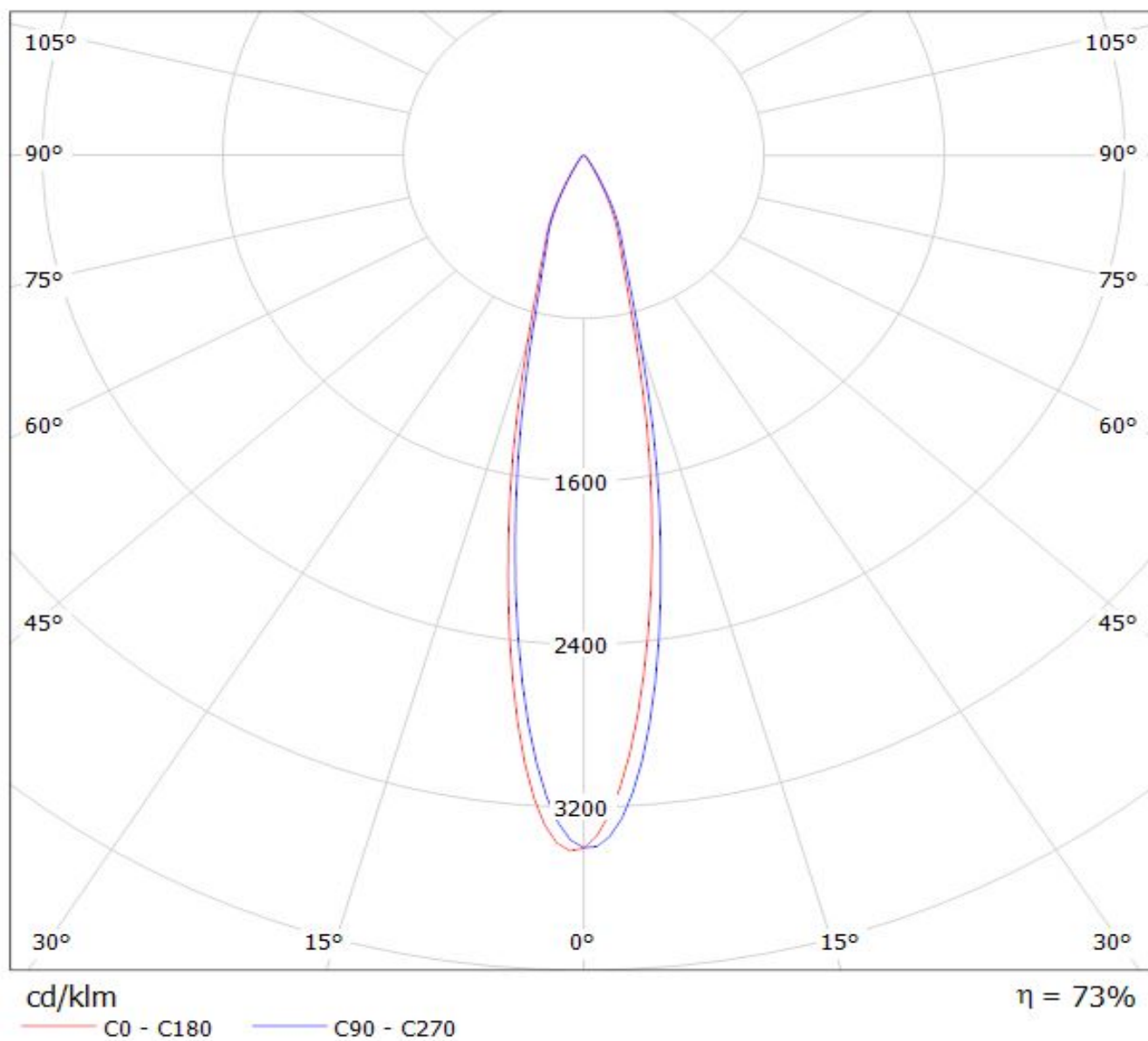
cd/klm

$\eta = 77\%$

— C0 - C180

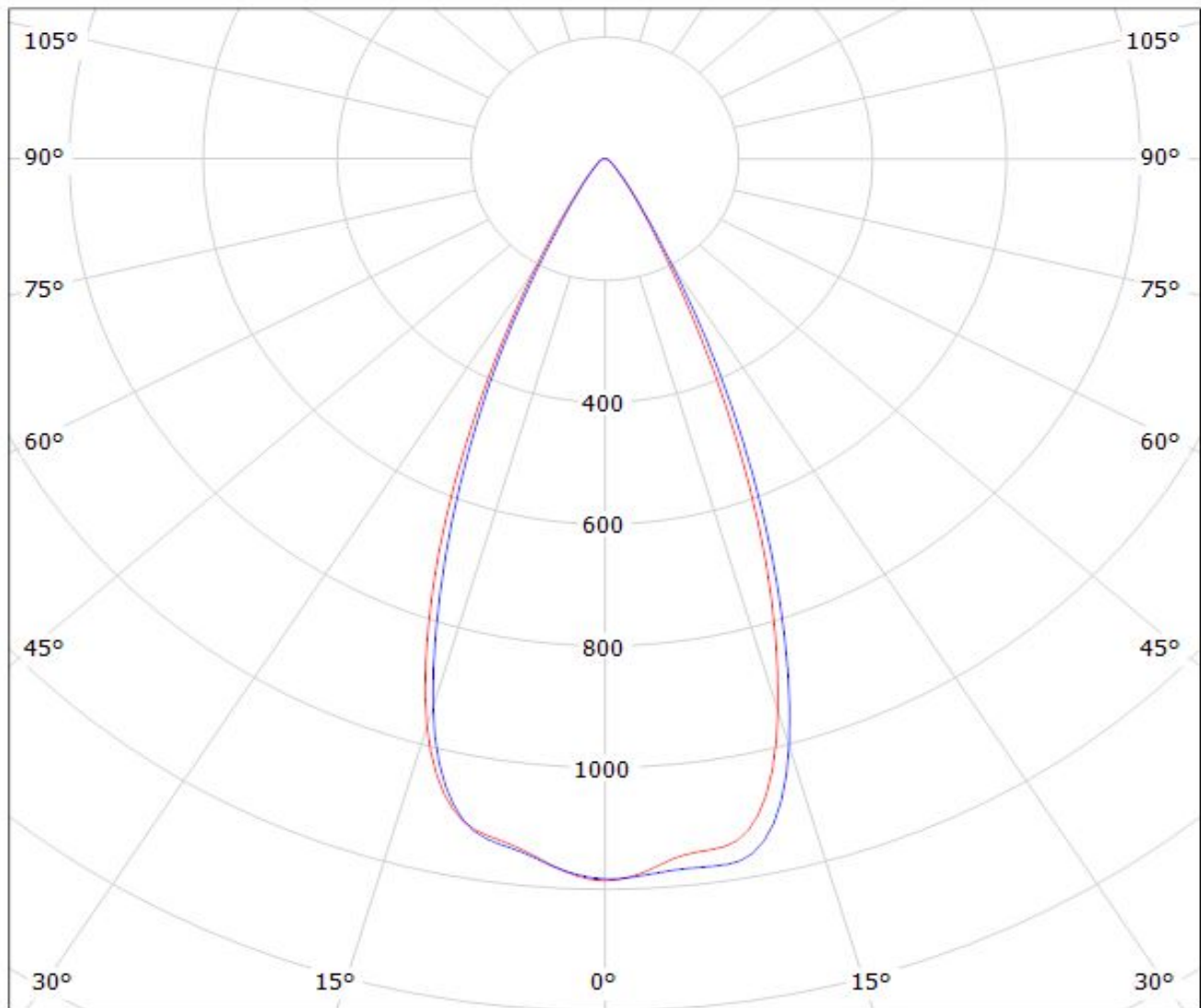
— C90 - C270

Luminaire: LEDiL Oy CN12297\_LENA-M-DL\_(LUXEON\_CoB\_1205) Eff. 74 %  
Lamps: 1 x LUXEON CoB 1205 (LHC1-3080-1205) 1106lm@250mA CCT=3000K P=8.3W I=250mA



Luminaire: LEDiL Oy CN12298\_LENA-W-DL\_(LUXEON\_CoB\_1205) Eff. 68%

Lamps: 1 x LUXEON CoB 1205 (LHC1-3080-1205) 1106lm@250mA CCT=3000K P=8.3W I=250mA



cd/klm

$\eta = 68\%$

— C0 - C180

— C90 - C270