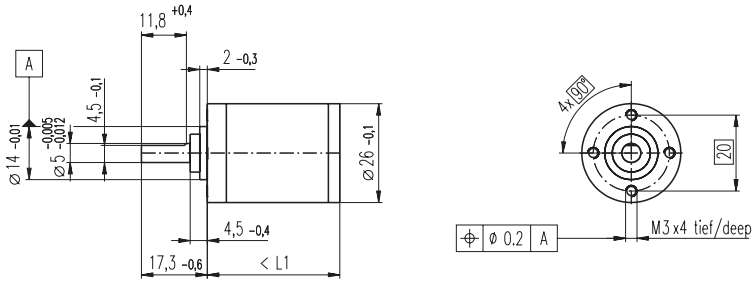


Planetary Gearhead GP 26 B $\varnothing 26$ mm, 0.5 - 2.0 Nm

Ceramicversion



Technical Data

Planetary Gearhead	straight teeth
Output shaft	stainless steel, hardened
Bearing at output	ball bearings
Radial play, 10 mm from flange	preloaded
Axial play	preloaded
Max. perm. radial load 10 mm from flange	70N
Max. permissible axial load	100 N
Max. permissible force for press fits	100 N
Recommended input speed	< 8000 rpm
Recommended temperature range	-15 / +80°C

- Stock program
- Standard program
- Special program (on request!)

Order Number

Gearhead Data	144026	144029	144035	144041	144045	144051	144057	144059	144066	144072	144078
1 Reduction	3.8 : 1	14 : 1	53 : 1	104 : 1	198 : 1	370 : 1	590 : 1	742 : 1	1386 : 1	1996 : 1	3189 : 1
2 Reduction absolute	15/4	225/16	3375/64	87723/845	50625/256	10556001/28561	59049/100	759375/1024	158340015/114244	285012027/142805	1594323/500
Order Number	144027	144030	144036	144042	144046	144052	144058	144061	144067	144073	144079
1 Reduction	4.4 : 1	16 : 1	62 : 1	109 : 1	231 : 1	389 : 1	690 : 1	867 : 1	1460 : 1	2102 : 1	3728 : 1
2 Reduction absolute	57/13	855/52	12825/208	2187/20	192375/832	263169/676	1121931/1625	2885625/3328	3947535/2704	7105563/3380	30292137/8125
Order Number	144028	144031	144037	144043	144047	144053	144060	144062	144068	144074	144080
1 Reduction	5.4 : 1	19 : 1	72 : 1	128 : 1	270 : 1	410 : 1	850 : 1	1014 : 1	1538 : 1	2214 : 1	4592 : 1
2 Reduction absolute	27/5	3249/169	48735/676	41553/325	731025/2704	6561/16	5314441/625	10965375/10816	98415/64	177147/80	14348907/3125
Order Number	144032	144038	144044	144048	144054	144063	144069	144075			
1 Reduction	20 : 1	76 : 1	157 : 1	285 : 1	455 : 1	1068 : 1	1621 : 1	2458 : 1			
2 Reduction absolute	81/4	1215/16	19683/125	18225/64	5000211/10985	273375/256	601692057/371293	135005697/54925			
Order Number	144033	144039	144049	144055	144064	144070	144076				
1 Reduction	24 : 1	84 : 1	316 : 1	479 : 1	1185 : 1	1707 : 1	2589 : 1				
2 Reduction absolute	1539/65	185193/2197	2777895/8788	124659/260	41668425/35152	15000633/8788	3365793/1300				
Order Number	144034	144040	144050	144056	144065	144071	144077				
1 Reduction	29 : 1	89 : 1	333 : 1	561 : 1	1249 : 1	1798 : 1	3027 : 1				
2 Reduction absolute	729/25	4617/52	69255/208	2368521/4225	1038825/832	373977/208	63950067/21125				
3 Number of stages	1	2	3	3	4	4	4	5	5	5	5
4 Max. continuous torque at gear output	Nm	0.5	0.6	1.3	1.3	1.8	1.8	1.8	2.0	2.0	2.0
5 Intermittently permissible torque at gear output	Nm	0.8	0.9	1.9	1.9	2.7	2.7	2.7	3.0	3.0	3.0
6 Sense of rotation, drive to output		=	=	=	=	=	=	=	=	=	=
7 Max. efficiency	%	84	70	59	59	49	49	49	42	42	42
8 Weight	g	65	86	108	108	130	130	130	152	152	152
9 Average backlash no load	°	0.5	0.6	0.8	0.8	1.0	1.0	1.0	1.0	1.0	1.0
10 Mass inertia	gcm ²	0.6	0.5	0.4	0.4	0.4	0.4	0.4	0.4	0.4	0.4
11 Gearhead length L1	mm	29.2	36.0	42.8	42.8	49.6	49.6	49.6	56.4	56.4	56.4



Combination:

+ Motor	Page	+ Tacho / Brake	Page	Overall length [mm]										
RE 25, 10 W	73			83.7	90.5	97.3	97.3	104.1	104.1	104.1	110.9	110.9	110.9	110.9
RE 25, 10 W	73	MR Encoder	201	94.7	101.5	108.3	108.3	115.1	115.1	115.1	121.9	121.9	121.9	121.9
RE 25, 10 W	73	DC-Tacho 22	213	106.1	112.9	119.7	119.7	126.5	126.5	126.5	133.3	133.3	133.3	133.3
RE 25, 10 W	73	Digital Encoder 22	203	97.7	104.5	111.3	111.3	118.1	118.1	118.1	124.9	124.9	124.9	124.9
RE 25, 10 W	73	Digital Encoder HED_ 55_	205/207	104.5	111.3	118.1	118.1	124.9	124.9	124.9	131.7	131.7	131.7	131.7
RE 25, 20 W	74			83.7	90.5	97.3	97.3	104.1	104.1	104.1	110.9	110.9	110.9	110.9
RE 25, 20 W	74	DC-Tacho 22	213	106.1	112.9	119.7	119.7	126.5	126.5	126.5	133.3	133.3	133.3	133.3
RE 25, 20 W	74	Digital Encoder 22	203	97.7	104.5	111.3	111.3	118.1	118.1	118.1	124.9	124.9	124.9	124.9
RE 25, 20 W	74	Digital Encoder HED_ 55_	205/207	104.5	111.3	118.1	118.1	124.9	124.9	124.9	131.7	131.7	131.7	131.7
RE 25, 20 W	74	Brake 40	236	117.8	124.6	131.4	131.4	138.2	138.2	138.2	145.0	145.0	145.0	145.0
RE 26, 18 W	75			88.0	94.8	101.6	101.6	108.4	108.4	108.4	115.2	115.2	115.2	115.2
RE 26, 18 W	75	MR Encoder	201	99.0	105.8	112.6	112.6	119.4	119.4	119.4	126.2	126.2	126.2	126.2
RE 26, 18 W	75	DC-Tacho 22	213	109.0	115.8	122.6	122.6	129.4	129.4	129.4	136.2	136.2	136.2	136.2
RE 26, 18 W	75	Digital Encoder 22	203	105.4	112.2	119.0	119.0	125.8	125.8	125.8	132.6	132.6	132.6	132.6
RE 26, 18 W	75	Digital Encoder HED_ 55_	205/207	106.4	113.2	120.0	120.0	126.8	126.8	126.8	133.6	133.6	133.6	133.6
S 2322, 6 W	81/82			77.2	84.0	90.8	90.8	97.6	97.6	97.6	104.4	104.4	104.4	104.4
S 2322, 6 W	82	Digital Encoder 22	203	91.2	98.0	104.8	104.8	111.6	111.6	111.6	118.4	118.4	118.4	118.4
S 2322, 6 W	82	Digital Encoder HED_ 55_	205/207	98.0	104.8	111.6	111.6	118.4	118.4	118.4	125.2	125.2	125.2	125.2
A-max 26	113-120			73.9	80.7	87.5	87.5	94.3	94.3	94.3	101.1	101.1	101.1	101.1
A-max 26	113-120	MR Encoder	201	83.0	89.8	96.6	96.6	103.4	103.4	103.4	110.2	110.2	110.2	110.2
A-max 26	113-119	Digital Magnetic Encoder 13	212	81.0	87.8	94.6	94.6	101.4	101.4	101.4	108.2	108.2	108.2	108.2
A-max 26	114-120	Digital Encoder 22	204	88.4	95.2	102.0	102.0	108.8	108.8	108.8	115.6	115.6	115.6	115.6
A-max 26	114-120	Digital Encoder HED_ 55_	206/208	92.3	99.1	105.9	105.9	112.7	112.7	112.7	119.5	119.5	119.5	119.5
RE-max 29	141-144			73.9	80.7	87.5	87.5	94.3	94.3	94.3	101.1	101.1	101.1	101.1
RE-max 29	141/143	MR Encoder	201	83.0	89.8	96.6	96.6	103.4	103.4	103.4	110.2	110.2	110.2	110.2