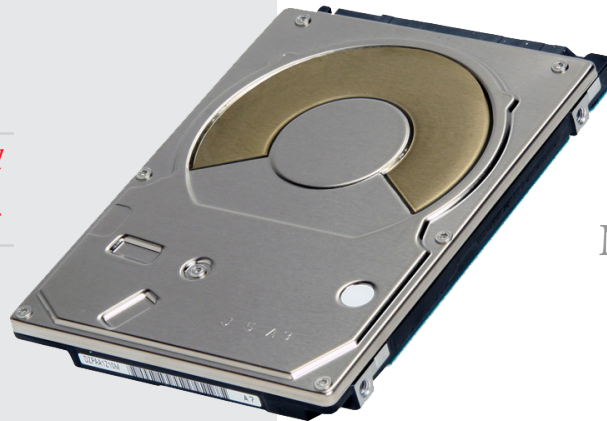


4,200 RPM

2.5-Inch 24/7 Power-On Hard Disk Drive

TOSHIBA
Leading Innovation >>>

*24/7 Power-On Storage, Engineered
for Rugged Operating Environments*



MK1060GSCX

Expanding the applications for digital storage technologies, Toshiba's MK1060GSCX Serial ATA hard disk drive is engineered for rugged 24-hour power-on operation in commercial equipment and industrial computing environments. The MK1060GSCX offers exceptional reliability and performance across wide temperature, altitude, and vibration ranges. Featuring a storage capacity of 100GB* and a "case temperature" range of -15 to +70 degrees Celsius – the widest temperature range for 24/7 power-on operation in the HDD market, the MK1060GSCX offers better resistance to vibration when compared to standard mobile HDD models.

Ideal for lower-duty cycle applications, the MK1060GSCX is an excellent choice for use in industrial equipment such as ATMs, digital surveillance, factory automation, and ruggedized PCs. In addition, this class of Toshiba disk drive models is typically available over a longer time period than PC-class disk drives, providing a better option for the design and business cycles of non-PC commercial applications.

The robust features and high storage capacity of the MK1060GSCX utilize the design expertise gained from Toshiba's long-standing market leadership in automotive-grade HDD technology. As part of Toshiba's commitment to the environment, the MK1060GSCX is halogen free and compliant with the European Union's Directive on the Restriction of the Use of Certain Hazardous Substances in Electrical and Electronic Equipment (RoHS).

- 100GB¹ Storage Capacity
- 24/7 Power-On Operation in Lower-duty Cycle Applications
- Extended Temperature Operating Range (-15° to 70°C)
- Extended Altitude Operating Range (-300 to 5,650 meters)
- Industry Standard 2.5 inch, 9.5-mm High Form Factor
- Serial ATA, Revision 2.6 / ATA-8
- 3-year Limited Warranty

Hard Drive

4,200 RPM

2.5-Inch 24/7 Power-On Hard Disk Drives

TOSHIBA
Leading Innovation >>>

MK1060GSCX

Series Overview

Drive Capacity	100GB ¹
Drive Interface	Serial ATA, Revision 2.6 / ATA-8
Number of Platters (disks)	1
Number of Data Heads	2
RoHS Compliant	Yes
Transfer Rate to Host	1.5 Gb/sec

Performance

Track-to-track Seek	2ms
Average Seek Time	12ms
Rotational Speed	4,200 RPM
Average Latency	7.14ms
Buffer Size	8MB

Power Requirements

Voltage	5V (+/-5%)
Spin up (start) Power	5.5 watts (-20° to 85°C) / 7.0 watts (-30° to -20°C)
Seek Power	2.3 watts
Read/Write Power	2.0 watts
Active Idle Power	1.0 watts ²
Low Power Idle	0.8 watts ²
Standby Power	0.25 watts ²
Sleep Power	0.13 watts ²

Physical Size

Dimensions (W) x (D) x (H)	69.85 mm (2.75 in) x 100.0 mm (3.94 in) x 9.5 mm (0.37 in)
Weight	96 g (3.39 oz)

Environmental

Temp - Operating	-15° to 70°C (5° to 158°F) (60°C / hr)
Temp - Non-Operating	-40° to 95°C (-40° to 203°F) (60°C / hr)
Vibration - Operating	29.4m/s ² , (3G) 8-50Hz / 24.5m/s ² , (2.5G) 50-200Hz
Vibration - Non-Operating	49m/s ² , (5G) 10-500Hz
Shock - Operating	2,940m/s ² , (300G) 2.0ms, 1/2sine / 980m/s ² , (100G) 11ms, 1/2sine
Shock Non-Operating	7,840m/s ² , (800G) 1.0ms, 1/2sine
Atmospheric Pressure (Altitude ³) Operating	495hPa (5,650m) – 1,013hPa (-300m)
Atmospheric Pressure (Altitude ³) Non-operating	193hPa (12,000m) – 1,013hPa (-300m)

Reliability

Load	600,000 times (5 to 60°C)
Unload	400,000 times (Operating Temperature Range)

Acoustics

Acoustics (idle)	23 dB
Acoustics (seek)	23 dB

¹One Gigabyte (1 GB) means 10⁹ = 1,000,000,000 bytes using powers of 10. A computer operating system, however, reports storage capacity using powers of 2 for the definition of 1 GB = 2³⁰ = 1,073,741,824 bytes, and therefore shows less storage capacity. Available storage capacity will also be less if the computer includes one or more pre-installed operating systems, pre-installed software applications, or media content. Actual formatted capacity may vary.

²SATA power management features applied.

³Transfer functions set by the International Civil Aviation Organization's (ICAO) standard for atmospheric pressure states that variations can occur depending on conditions, such as

Visit us at: www.toshibastorage.com

temperature and other factors. Based on Chronological Scientific Tables, variations can occur depending on conditions, such as temperature and other factors.

Subject to Change: While Toshiba has made every effort at the time of publication to ensure the accuracy of the information provided herein, product specifications, configurations, prices, system/component/options availability are all subject to change without notice.
© 2010 Toshiba America Information Systems, Inc. All rights reserved.

MK1060GACX 11/2010