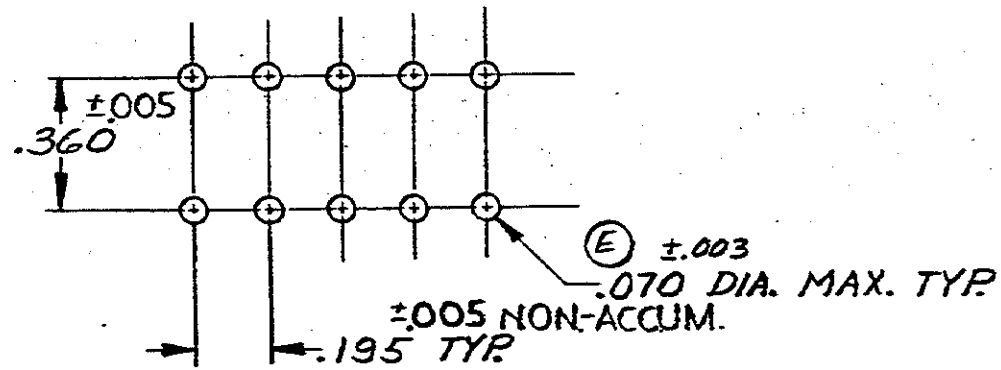
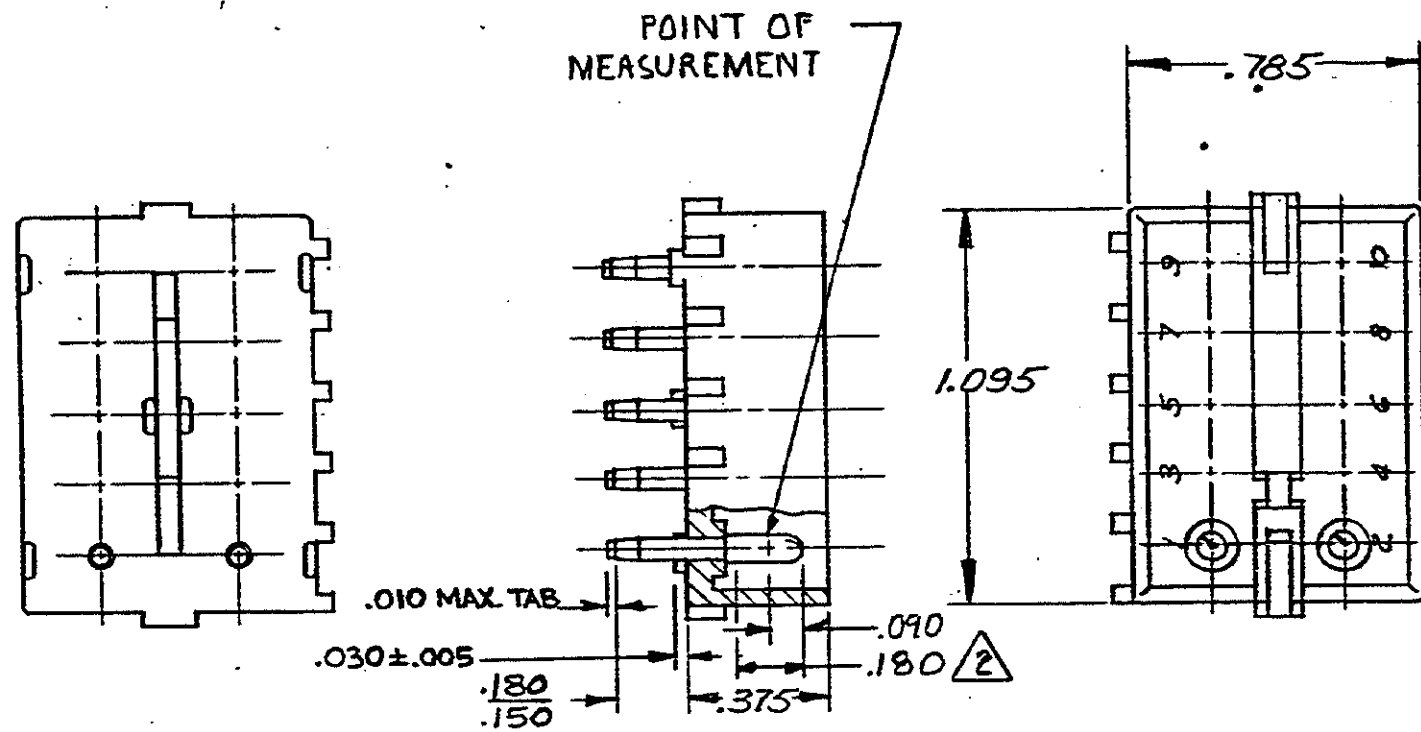


2

S



RECOMMENDED LAYOUT FOR
.062 P.C. BOARD

1. PARTS COMPLY WITH AMP SOLDERABILITY SPEC. NO. 109-11-3.
2. CONTACT IS PLATED OVERALL WITH .000050 NICKEL, THEN .000030 GOLD OVER CONTACT LENGTH INDICATED AND MATTE TIN ON SOLDER TAIL END.

| ASSEMBLY NO. | HSG. MATL & COLOR | PIN MATL & FINISH |
|--------------|-------------------|------------------------|
| 2-380991-0 | NYLON - NATURAL | COPPER ALLOY - GOLD |
| 1-380991-0 | NYLON - NATURAL | COPPER ALLOY - PRE-TIN |

Unpublished copy not to be reproduced nor published without written permission of AMP Incorporated.

| LTR | REVISION RECORD | DR | CHK | DATE |
|-----|--------------------------------|-----|-----|---------|
| T | OBS 1--1, 1--2 PER ECN CM-2706 | NG | RS | 8-9-72 |
| S | OBS 1-5 & 1-6 PER CM 2213 | TS | RS | 3/20/89 |
| R | OBS. 1-3 & 1-4 PER CM-160 | PKC | TS | 4-28-88 |

| NUMBER | REQUIRED PER ASSEMBLY | DESCRIPTION |
|--------|-----------------------|-------------|
| 156088 | | |

© 1973 BY AMP INCORPORATED. ALL RIGHTS RESERVED. AMP PRODUCTS COVERED BY PATENTS AND/OR PATENTS PENDING.

DR: 9. Edman 6-12-73
CHK: E. Croner 6-13-73
DE: [Signature]

MATERIAL AND FINISH: SEE-TABLE

CLASS: #
TYPE: #

WIRE - RANGE - INSULATION: #

TOLERANCE EXCEPT AS NOTED: ±.015 ±1°0'

SCALE: #

LOC: CM B NO: 380991

NAME: 10 CIRCUIT MATE-N-LOK P.C. BOARD PIN HEADER

CUSTOMER COPY REFERENCE ONLY

DIMENSIONS IN INCHES. DO NOT SCALE PRINT.

