

Surge protection device - C-UFB- 5DC/E - 2782300

Please be informed that the data shown in this PDF Document is generated from our Online Catalog. Please find the complete data in the user's documentation. Our General Terms of Use for Downloads are valid (<http://download.phoenixcontact.com>)




Attachment plug with surge voltage coarse and fine protection, for coaxial signal interfaces with floating shield, signal voltage 5 V. Connection: BNC socket/plug

Why buy this product

- Ground connection via separately led cable
- For insertion in the cable



Key commercial data

Packing unit	10 pc
GTIN	 4 017918 069445
Weight per Piece (excluding packing)	106.62 g
Custom tariff number	85363010
Country of origin	Germany

Technical data

Dimensions

Height	93 mm
Width	25.4 mm
Length	25.4 mm

Ambient conditions

Ambient temperature (operation)	-40 °C ... 80 °C
Degree of protection	IP20

General

Housing material	Aluminum
Color	black
Standards for air and creepage distances	VDE 0110-1
	IEC 60664-1
Mounting type	Connection-specific intermediate plugging

Surge protection device - C-UFB- 5DC/E - 2782300

Technical data

General

Type	Attachment plug
Direction of action	Line-Shield/Earth Ground

Protective circuit

IEC test classification	C2
	C3
	D1
Maximum continuous operating voltage U_C	5 V DC
Maximum continuous voltage U_C (wire-shield)	5 V DC
Nominal current I_N	185 mA (25 °C)
Operating effective current I_C at U_C	$\leq 300 \mu\text{A}$
Residual current I_{PE}	$\leq 2 \mu\text{A}$
Nominal discharge current I_n (8/20) μs (Core-Earth)	10 kA
Nominal discharge current I_n (8/20) μs (Core-Shield)	10 kA
Total surge current (8/20) μs	20 kA
Output voltage limitation at 1 kV/ μs (Core-Earth) spike	$\leq 500 \text{ V}$
Output voltage limitation at 1 kV/ μs (Core-Shield) spike	$\leq 35 \text{ V}$
Output voltage limitation at 1 kV/ μs (Core-Shield) static	$\leq 15 \text{ V}$
Residual voltage at I_n , (conductor-shield)	$\leq 10 \text{ V}$
Voltage protection level U_p (Core-Earth)	$\leq 500 \text{ V}$ (C1 - 1 kV/500 A)
	$\leq 500 \text{ V}$ (C3 (10 A))
Voltage protection level U_p (Core-Shield)	$\leq 55 \text{ V}$ (C1 - 1 kV/500 A)
	$\leq 25 \text{ V}$ (C3 (10 A))
Response time t_A (Core-Earth)	$\leq 100 \text{ ns}$
Response time t_A (Core-GND)	$\leq 500 \text{ ns}$
Input attenuation a_E , asym.	typ. 2 dB ($\leq 20 \text{ MHz}$)
Cut-off frequency f_g (3 dB), asym. (shield) in 50 Ohm system	typ. 90 MHz
Surge carrying capacity in acc. with IEC 61643-21 (Core-Earth)	C2 (10 kV/5 kA)
	D1 (2.5 kA)

Connection data

Connection method	BNC 50 Ω
Connection type IN	BNC socket
Connection type OUT	BNC plug

Connection, equipotential bonding

Connection method	PVC litz wire
-------------------	---------------

Standards and Regulations

Standards/regulations	IEC 61643-21
-----------------------	--------------

Surge protection device - C-UFB- 5DC/E - 2782300

Classifications

eCl@ss

eCl@ss 4.0	27140201
eCl@ss 4.1	27130801
eCl@ss 5.0	27130801
eCl@ss 5.1	27130801
eCl@ss 6.0	27130807
eCl@ss 7.0	27130807
eCl@ss 8.0	27130807

ETIM

ETIM 2.0	EC000943
ETIM 3.0	EC000943
ETIM 4.0	EC000943
ETIM 5.0	EC000943

UNSPSC

UNSPSC 6.01	30212010
UNSPSC 7.0901	39121610
UNSPSC 11	39121610
UNSPSC 12.01	39121610
UNSPSC 13.2	39121620

Approvals

Approvals

Approvals

GOST

Ex Approvals

Approvals submitted

Approval details

GOST

Surge protection device - C-UFB- 5DC/E - 2782300

Accessories

Accessories

Flange coupling

Connector/Adapter - BNC-V 50 - 2805041



BNC connector, single-level, for mounting on NS 32 or NS 35/7.5, wave impedance: 50 Ohm

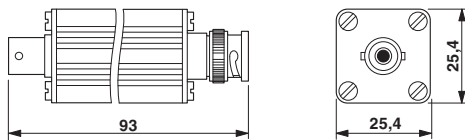
Connector/Adapter - BNC-DV 50 - 2805038



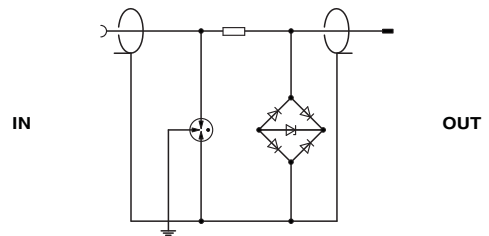
BNC connector, double-level, for mounting on NS 32 or NS 35/7.5, wave impedance: 50 Ohm

Drawings

Dimensioned drawing



Circuit diagram



Surge protection device - C-UFB- 5DC/E - 2782300

Diagram

