

Base strip - MC 1,5/ 7-G-3,5 THT - 1937541

Please be informed that the data shown in this PDF Document is generated from our Online Catalog. Please find the complete data in the user's documentation. Our General Terms of Use for Downloads are valid (<http://download.phoenixcontact.com>)

Header, Nominal current: 8 A, Rated voltage (III/2): 160 V, Number of positions: 7, Pitch: 3.5 mm, Color: black, Contact surface: Tin, Assembly: SMD/THT/THR, User information and design recommendations for through hole reflow technology can be found under "Downloads"




The figure shows a 10-position version of the product

Why buy this product

- 3.5 mm pitch
- Low-profile THR headers with a compact pitch
- Plug-in direction parallel to the PCB
- Delivery form: box packaging, in bulk for small series
- Delivery form: tape-on-reel packing according to IEC 60286-3 for automated mounting
- Use in SMT reflow processes



Key commercial data

| | |
|--------------------------------------|---|
| Packing unit | 50 pc |
| Minimum order quantity | 50 pc |
| GTIN |  4 017918 890216 |
| Weight per Piece (excluding packing) | 3.08 g |
| Custom tariff number | 85366990 |
| Country of origin | Germany |

Technical data

Dimensions

| | |
|----------------|--------------|
| Length | 9.2 mm |
| Pitch | 3.5 mm |
| Dimension a | 21 mm |
| Pin dimensions | 0,8 x 0,8 mm |
| Hole diameter | 1.4 mm |

General

| | |
|-------------------|------------------|
| Range of articles | MC 1,5/...-G-THT |
|-------------------|------------------|

Base strip - MC 1,5/ 7-G-3,5 THT - 1937541

Technical data

General

| | |
|---|--------------------|
| Insulating material group | IIIa |
| Rated surge voltage (III/3) | 2.5 kV |
| Rated surge voltage (III/2) | 2.5 kV |
| Rated surge voltage (II/2) | 2.5 kV |
| Rated voltage (III/3) | 160 V |
| Rated voltage (III/2) | 160 V |
| Rated voltage (II/2) | 250 V |
| Connection in acc. with standard | EN-VDE |
| Nominal current I _N | 8 A |
| Maximum load current | 8 A (per position) |
| Insulating material | PA-GF |
| Inflammability class according to UL 94 | V0 |
| Color | black |
| Number of positions | 7 |

Classifications

eCl@ss

| | |
|------------|----------|
| eCl@ss 4.0 | 272607xx |
| eCl@ss 4.1 | 27260701 |
| eCl@ss 5.0 | 27260701 |
| eCl@ss 5.1 | 27260701 |
| eCl@ss 6.0 | 27260704 |
| eCl@ss 7.0 | 27440402 |
| eCl@ss 8.0 | 27440402 |

ETIM

| | |
|----------|----------|
| ETIM 3.0 | EC001121 |
| ETIM 4.0 | EC002637 |
| ETIM 5.0 | EC002637 |

UNSPSC

| | |
|---------------|----------|
| UNSPSC 6.01 | 30211810 |
| UNSPSC 7.0901 | 39121409 |
| UNSPSC 11 | 39121409 |
| UNSPSC 12.01 | 39121409 |
| UNSPSC 13.2 | 39121409 |

Approvals

Approvals

Base strip - MC 1,5/ 7-G-3,5 THT - 1937541

Approvals

Approvals

VDE Gutachten mit Fertigungsüberwachung / GOST / IECCEB Scheme / UL Recognized / cUL Recognized / GOST / CCA / cULus Recognized

Ex Approvals

Approvals submitted

Approval details

VDE Gutachten mit Fertigungsüberwachung

| | |
|--------------------|-------|
| Nominal current IN | 8 A |
| Nominal voltage UN | 160 V |

GOST

IECEE CB Scheme

| | |
|--------------------|-------|
| Nominal current IN | 8 A |
| Nominal voltage UN | 160 V |

UL Recognized

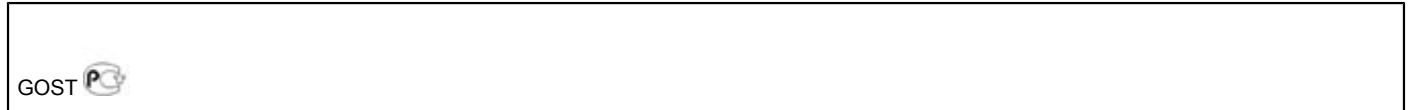
| | B | D |
|--------------------|-------|-------|
| Nominal current IN | 8 A | 8 A |
| Nominal voltage UN | 300 V | 300 V |

cUL Recognized

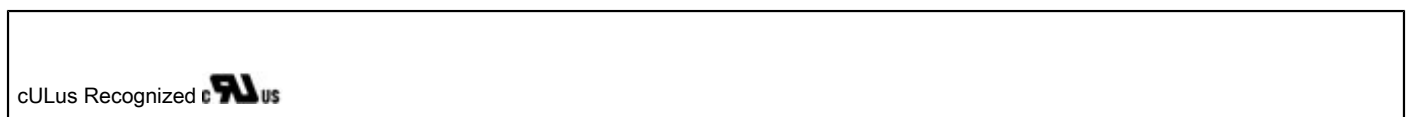
| | B | D |
|--------------------|-------|-------|
| Nominal current IN | 8 A | 8 A |
| Nominal voltage UN | 300 V | 300 V |

Base strip - MC 1,5/ 7-G-3,5 THT - 1937541

Approvals

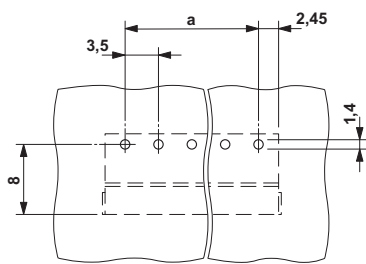


| | |
|-----------------------|-------|
| CCA | |
| Nominal current I_N | 8 A |
| Nominal voltage U_N | 160 V |

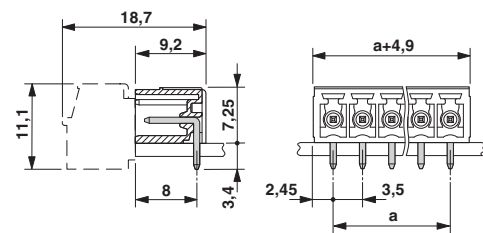


Drawings

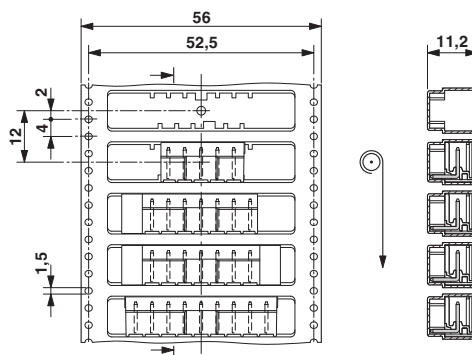
Drilling diagram



Dimensioned drawing

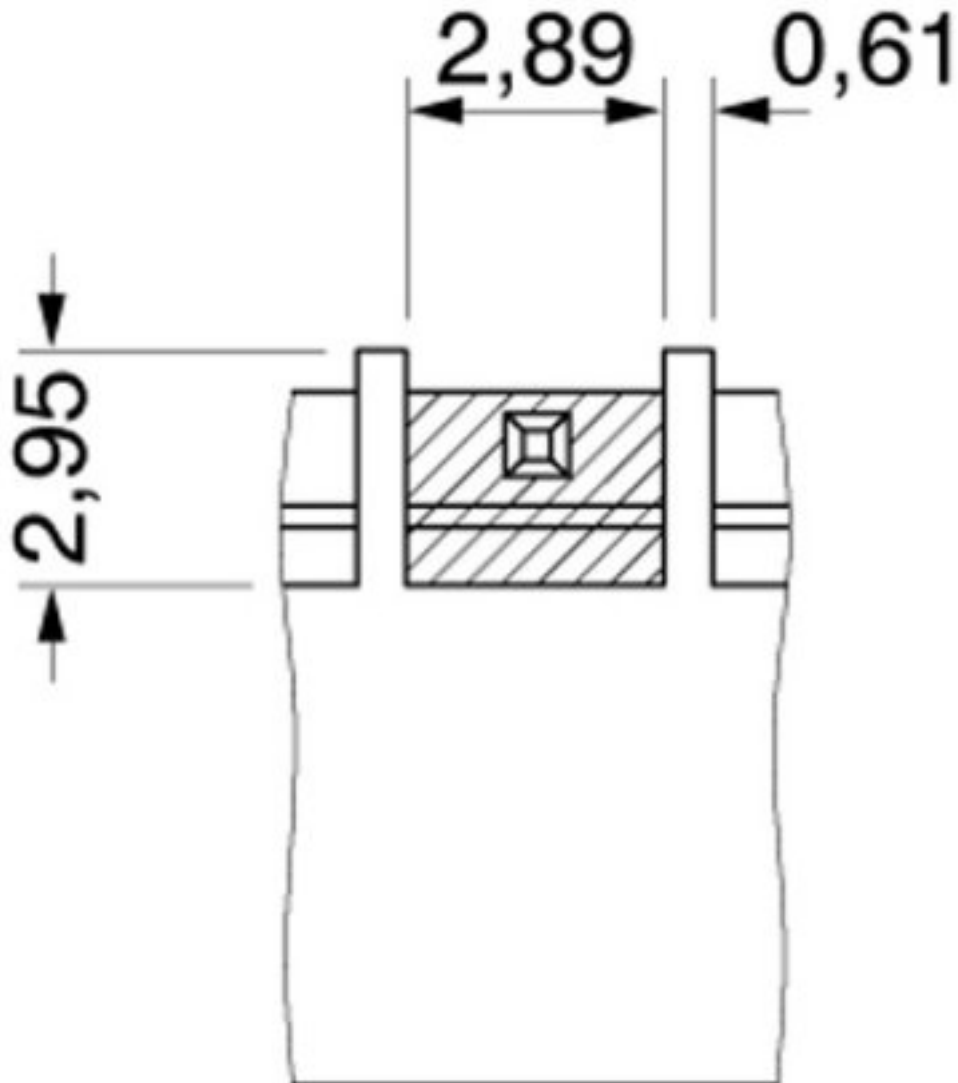


Dimensioned drawing



Base strip - MC 1,5/ 7-G-3,5 THT - 1937541

Dimensioned drawing



Bottom view, free space for solder paste, 0.3 mm deep