



Auxiliary
contactor
BG00

Product designation

Product type designation

Contact characteristics

Number of poles nr. 4

Rated insulation voltage U_i V 690

Operating frequency

Operational frequency min Hz 25

Operational frequency max Hz 400

Conventional free air thermal current I_{th} A 10

Tightening torque for terminals

min Nm 0.8

max Nm 1

min lbft 0.59

max lbft 0.74

Tightening torque for coil terminal

min Nm 0.8

max Nm 1

min lbft 0.59

max lbft 0.74

max number of wires simultaneously connectable nr. 2

Conductor section

AWG

min 18

max 12

Flexible w/o lug conductor section

min mm² 0.75

max mm² 2.5

Flexible c/w lug conductor section

min mm² 1.5

max mm² 2.5

Flexible with insulated spade lug conductor section

min mm² 1.5

max mm² 2.5

Power terminal protection according to IEC/EN 60529 IP20

Ambient conditions

Temperature

Operating temperature

min °C -40

max °C 60

Storage temperature

min °C -55

max °C 70

Max altitude m 3,000

Operating position

	normal allowable		Vertical plan ±30°
Mounting			Screw / DIN rail 35mm
Weight		g	0.175
Operations			
Mechanical life		Cycles	20,000,000
Safety related data			
Mirror contacts according to IEC/EN 609474-4-1			Yes
EMC compatibility			Yes
AC coil operating			
Rated AC voltage at 50/60Hz, 60Hz		min V	12
		max V	575
AC operating voltage			
of 50/60Hz coil powered at 50Hz			
pick-up		min %Us	75
		max %Us	115
drop-out		min %Us	20
		max %Us	55
of 50/60Hz coil powered at 60Hz			
pick-up		min %Us	80
		max %Us	115
drop-out		min %Us	20
		max %Us	55
of 60Hz coil powered at 60Hz			
pick-up		min %Us	75
		max %Us	115
drop-out		min %Us	20
		max %Us	55
AC operating voltage			
of 50/60Hz coil powered at 50Hz		in-rush VA	30
		holding VA	4
of 50/60Hz coil powered at 60Hz		in-rush VA	25
		holding VA	3
of 60Hz coil powered at 60Hz		in-rush VA	30
		holding VA	4
Dissipation at holding ≤20°C 50Hz		W	0.95
DC coil operating			
DC rated control voltage		min V	6
		max V	250
DC operating voltage			
pick-up		min %Us	75

drop-out	max	%Us	115
	min	%Us	10
	max	%Us	20

Average coil consumption $\leq 20^{\circ}\text{C}$

in-rush	W	3.2
holding	W	3.2

Max cycles frequency

Mechanical operations Cycles/h 3,600

Operating times

Average time for Us control

in AC

Closing NO

min	ms	12
max	ms	21

Opening NO

min	ms	9
max	ms	18

Closing NC

min	ms	17
max	ms	26

Opening NC

min	ms	7
max	ms	17

in DC

Closing NO

min	ms	18
max	ms	25

Opening NO

min	ms	2
max	ms	3

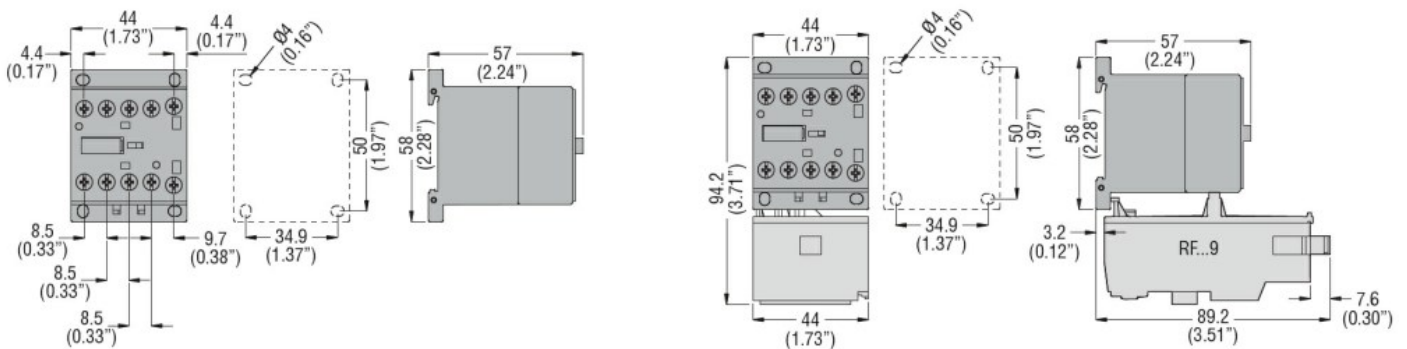
Closing NC

min	ms	3
max	ms	5

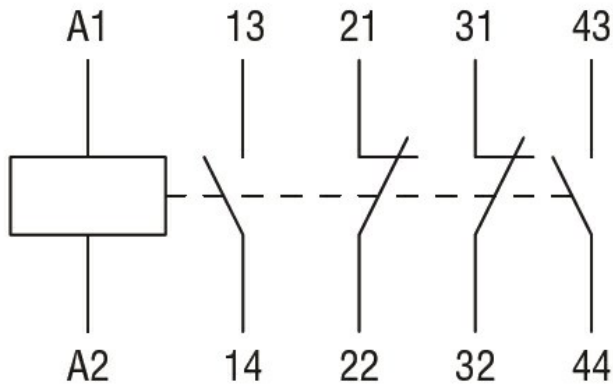
Opening NC

min	ms	11
max	ms	17

Dimensions



Wiring diagrams



Certifications and compliance

Certifications

CSA C22.2 n° 60947-1

CSA C22.2 n° 60947-5-1

IEC/EN 60947-1

IEC/EN 60947-5-1

UL 60947-1

UL 60947-5-1

Compliance

CCC

cULus

EAC

ETIM 6 classification

EC000066 - Power contactor, AC switching