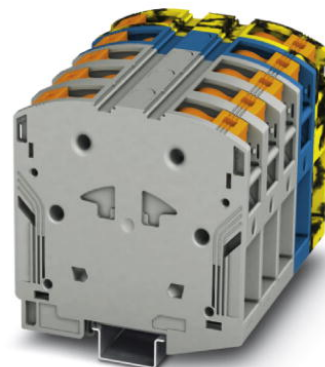



PTPOWER 95-3L/FE

Order No.: 3260115

The figure shows a version of the article



Termination block, Connection method: Push-in connection, Number of positions: 4, Cross section: 25 mm² - 95 mm², AWG: 4 - 3/0, Width: 100 mm, Color: Gray/black-yellow, Mounting type: NS 35/15

Commercial data	
EAN	4  046356 778978
Note	Made-to-order
Pack	2
Customs tariff	85369010
Gross weight in pieces	99.99 g
Country of Origin	PL
Catalog page information	Page 109 (CAT-3-2013)

Product notes

WEEE/RoHS-compliant since: 11/07/2012



Please note that the data given here has been taken from the online catalog. For comprehensive information and data, please refer to the user documentation at <http://www.download.phoenixcontact.com>. The General Terms and Conditions of Use apply to Internet downloads.

Technical data

General	
Number of levels	1
Number of connections	2
Color	Gray/black-yellow
Insulating material	PA
Inflammability class according to UL 94	V0

Dimensions

Width	100 mm
Length	105.5 mm
Height NS 35/15	108.7 mm

General

Maximum load current	232 A (with 95 mm ² conductor cross section)
Rated surge voltage	8 kV
Pollution degree	3
Surge voltage category	III
Insulating material group	I
Connection in acc. with standard	IEC 60947-7-1
Nominal current I _N	232 A
Nominal voltage U _N	1500 V
Open side panel	nein
Number of positions	4

Connection data

Conductor cross section solid min.	25 mm ²
Conductor cross section solid max.	95 mm ²
Conductor cross section AWG/kcmil min.	4
Conductor cross section AWG/kcmil max.	3/0
Conductor cross section stranded min.	25 mm ²
Conductor cross section stranded max.	95 mm ²
Min. AWG conductor cross section, stranded	4
Max. AWG conductor cross section, stranded	4/0
Conductor cross section stranded, with ferrule without plastic sleeve min.	25 mm ²
Conductor cross section stranded, with ferrule without plastic sleeve max.	95 mm ²
Conductor cross section stranded, with ferrule with plastic sleeve min.	25 mm ²
Conductor cross section stranded, with ferrule with plastic sleeve max.	95 mm ²
Cross section with insertion bridge, solid max.	95 mm ²
Cross section with insertion bridge, stranded max.	70 mm ²
Connection method	Push-in connection
Stripping length	40 mm

Certificates



Certification

GOST

Certifications applied for:

Certification Ex:

Accessories

Item	Designation	Description
Assembly		
3260145	AGK 10-PTPOWER	Pick-off terminal block, Connection method: Push-in connection, Cross section: 0.5 mm ² - 16 mm ² , AWG: 20 - 6, Width: 18.5 mm, Height: 34.7 mm, Color: gray, Mounting type: On base element
3260154	AGK 10-PTPOWER BK/YE	Pick-off terminal block, Connection method: Push-in connection, Cross section: 0.5 mm ² - 16 mm ² , AWG: 20 - 6, Width: 18.5 mm, Height: 34.7 mm, Color: black/yellow, Mounting type: On base element
3260148	AGK 10-PTPOWER BU	Pick-off terminal block, Connection method: Push-in connection, Cross section: 0.5 mm ² - 16 mm ² , AWG: 20 - 6, Width: 18.5 mm, Height: 34.7 mm, Color: blue, Mounting type: On base element
3260151	AGK 10-PTPOWER GN/YE	Pick-off terminal block, Connection method: Push-in connection, Cross section: 0.5 mm ² - 16 mm ² , AWG: 20 - 6, Width: 18.5 mm, Height: 34.7 mm, Color: green/yellow, Mounting type: On base element
1201662	E/AL-NS 35	End clamp, for end support of UKH 50 to UKH 240, is pushed onto DIN rail NS 35 and fixed with 2 screws, width: 10 mm, color: aluminum
1201756	NS 35/15 AL UNPERF 2000MM	DIN rail, deep drawn, high profile, unperforated, 1.5 mm thick, material: aluminum, height 15 mm, width 35 mm, length 2000 mm
1206573	NS 35/15 CAP	DIN rail end piece, for DIN rail NS 35/15
1201895	NS 35/15 CU UNPERF 2000MM	DIN rail, material: Copper, unperforated, 1.5 mm thick, height 15 mm, width 35 mm, length: 2 m
1201730	NS 35/15 PERF 2000MM	DIN rail, material: steel galvanized and passivated with a thick layer, perforated, height 15 mm, width 35 mm, length: 2000 mm
1201714	NS 35/15 UNPERF 2000MM	DIN rail, material: Steel, unperforated, height 15 mm, width 35 mm, length: 2 m
0806602	NS 35/15 WH PERF 2000MM	DIN rail 35 mm (NS 35)

1204135	NS 35/15 WH UNPERF 2000MM	DIN rail 35 mm (NS 35)
1206599	NS 35/15 ZN PERF 2000MM	DIN rail, material: Galvanized, perforated, height 15 mm, width 35 mm, length: 2 m
1206586	NS 35/15 ZN UNPERF 2000MM	DIN rail, material: Galvanized, unperforated, height 15 mm, width 35 mm, length: 2 m

General

3260157	EB 2-25/PT	Insertion bridge, Number of positions: 2, Color: red
3260160	EB 3-25/PT	Insertion bridge, Number of positions: 3, Color: red

Marking

0828295	TMT (EX9,5)R	Marker for terminal blocks, Roll, white, Unlabeled, Can be labeled with: THERMOMARK ROLL, THERMOMARK X, THERMOMARK S1.1, Mounting type: Snap into universal marker groove, Snap into flat marker groove, Lettering field: 9.5 x 50000 mm
0819217	UC-TM 16	Marker for terminal blocks, Sheet, white, Unlabeled, Can be labeled with: BLUEMARK CLED, BLUEMARK LED, Plotter, Mounting type: Snap into tall marker groove, For terminal block width: 16 mm, Lettering field: 15.45 x 10.5 mm
0824621	UC-TM 16 CUS	Marker for terminal blocks, Can be ordered: By sheet, white, Labeled according to customer specifications, Mounting type: Snap into tall marker groove, For terminal block width: 16 mm, Lettering field: 15.45 x 10.5 mm
0819262	UC-TMF 16	Marker for terminal blocks, Sheet, white, Unlabeled, Can be labeled with: BLUEMARK CLED, BLUEMARK LED, Plotter, Mounting type: Snap into flat marker groove, For terminal block width: 16 mm, Lettering field: 15.45 x 5.1 mm
0824678	UC-TMF 16 CUS	Marker for terminal blocks, Can be ordered: By sheet, white, Labeled according to customer specifications, Mounting type: Snap into flat marker groove, For terminal block width: 16 mm, Lettering field: 15.45 x 5.1 mm
0829146	UCT-TM 16	Marker for terminal blocks, Sheet, white, Unlabeled, Can be labeled with: THERMOMARK CARD PLUS, THERMOMARK CARD, BLUEMARK CLED, BLUEMARK LED, Mounting type: Snap into tall marker groove, For terminal block width: 16 mm, Lettering field: 14.8 x 9.6 mm
0829637	UCT-TM 16 CUS	Marker for terminal blocks, Can be ordered: By sheet, white, Labeled according to customer specifications, Mounting type: Snap into tall marker groove, For terminal block width: 16 mm, Lettering field: 14.8 x 9.6 mm
0829218	UCT-TMF 16	Marker for terminal blocks, Sheet, white, Unlabeled, Can be labeled with: THERMOMARK CARD PLUS, THERMOMARK CARD, BLUEMARK CLED, BLUEMARK LED, Mounting type: Snap into flat marker groove, For terminal block width: 16 mm, Lettering field: 15.2 x 4.7 mm

0829693	UCT-TMF 16 CUS	Marker for terminal blocks, Can be ordered: By sheet, white, Labeled according to customer specifications, Mounting type: Snap into flat marker groove, For terminal block width: 16 mm, Lettering field: 15.2 x 4.7 mm
0827463	ZB 16 CUS	Zack marker strip, Can be ordered: Strip, white, Labeled according to customer specifications, Mounting type: Snap into tall marker groove, For terminal block width: 16.3 mm, Lettering field: 10.5 x 16.25 mm
0827461	ZB 16:UNPRINTED	Zack marker strip, Strip, white, Unlabeled, Can be labeled with: Plotter, Mounting type: Snap into tall marker groove, For terminal block width: 16 mm, Lettering field: 16 x 10.5 mm
0827465	ZBF 16 CUS	Zack Marker strip, flat, Can be ordered: Strip, white, Labeled according to customer specifications, Mounting type: Snap into flat marker groove, For terminal block width: 16 mm, Lettering field: 5.15 x 16 mm
0827464	ZBF 16:UNPRINTED	Zack Marker strip, flat, Strip, white, Unlabeled, Can be labeled with: Plotter, Mounting type: Snap into flat marker groove, Lettering field: 16.25 x 10.5 mm

Plug/Adapter

0201731	MPS-IH BK	Insulating sleeve, Color: black
0201689	MPS-IH BU	Insulating sleeve, Color: blue
0201702	MPS-IH GN	Insulating sleeve, Color: green
0201728	MPS-IH GY	Insulating sleeve, Color: gray
0201676	MPS-IH RD	Insulating sleeve, Color: red
0201663	MPS-IH WH	Insulating sleeve, Color: white
0201692	MPS-IH YE	Insulating sleeve, Color: yellow
0201744	MPS-MT	Test plugs

Software

5146040	CLIP-PROJECT ADVANCED	Multilingual software for easy planning of Phoenix Contact on DIN rails together with the integrated TRABTECH-select software module for planning comprehensive surge protection concepts.
5146053	CLIP-PROJECT PROFESSIONAL	Multi-lingual software for terminal strip project planning. A marking module allows professional labeling of markers and labels for marking terminal blocks, conductors, cables and devices. The additionally integrated software module TRABTECH-select for planning comprehensive surge protection concepts.

Tools

1206612	SZF 3-1,0X5,5	Actuation tool, for ST terminal blocks, also suitable for use as a bladed screwdriver, size: 1.0 x 5.5 x 150 mm, 2-component grip, with non-slip grip
---------	---------------	---

Drawings

Circuit diagram



Address

PHOENIX CONTACT Ltd
Halesfield 13
Telford / Shropshire / TF7 4PG,England
Phone 01952 681 700
Fax 01952 681 799
<http://www.phoenixcontact.co.uk>



Phoenix Contact Ltd.
Technical modifications reserved;