


**Ordering number C11889\_STRADA-SQ-T-DN**

Family	Strada-SQ	FWHM	Asym degrees
Type	Lens	Efficiency	(simulated) 0 %
LED	XT-E	cd/lm	-
Color	Clear	Gerber File	Available
Diameter	25 + 25 mm		
Height	7.9 mm		
Style	Square		
Optic Material	PMMA		
Holder Material	-		
Fastening	Screw, pin, glue		
Status	Ready		


**Ordering number CA11890\_STRADA-SQ-T-DN**

Family	Strada-SQ	FWHM	Asym degrees
Type	Assembly	Efficiency	(simulated) 0 %
LED	XT-E	cd/lm	-
Color	Clear	Gerber File	Available
Diameter	25 + 25 mm		
Height	8.05 mm		
Style	Square		
Optic Material	PMMA		
Holder Material	-		
Fastening	Screw, pin, tape		
Status	Ready		


**Ordering number C11891\_STRADA-SQ-T-DW**

Family	Strada-SQ	FWHM	Asym degrees
Type	Lens	Efficiency	(simulated) 0 %
LED	XT-E	cd/lm	-
Color	Clear	Gerber File	Available
Diameter	25 + 25 mm		
Height	12.5 mm		
Style	Square		
Optic Material	PMMA		
Holder Material	-		
Fastening	Screw, pin, glue		
Status	Ready		

Designed for European streetlighting.


**Ordering number CA11892\_STRADA-SQ-T-DW**

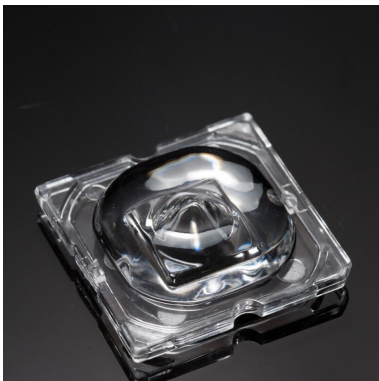
Family	Strada-SQ	FWHM	Asym degrees
Type	Assembly	Efficiency	(simulated) 0 %
LED	XT-E	cd/lm	-
Color	Clear	Gerber File	Available
Diameter	25 + 25 mm		
Height	12.65 mm		
Style	Square		
Optic Material	PMMA		
Holder Material	-		
Fastening	Screw, pin, tape		
Status	Ready		


**Ordering number C11962\_STRADA-SQ-T-DW**

Family	Strada-SQ	FWHM	Asym degrees
Type	Lens	Efficiency	(simulated) 0 %
LED	XT-E	cd/lm	-
Color	Clear	Gerber File	Available
Diameter	25 + 25 mm		
Height	11.5 mm		
Style	Square		Designed for USA streetlighting.
Optic Material	PMMA		
Holder Material	-		
Fastening	Screw, pin, glue		
Status	Ready		


**Ordering number CA11963\_STRADA-SQ-T-DW**

Family	Strada-SQ	FWHM	Asym degrees
Type	Assembly	Efficiency	(simulated) 0 %
LED	XT-E	cd/lm	-
Color	Clear	Gerber File	Available
Diameter	25 + 25 mm		
Height	11.65 mm		
Style	Square		Designed for US street lighting.
Optic Material	PMMA		
Holder Material	-		
Fastening	Screw, pin, tape		
Status	Ready		


**Ordering number C12727\_STRADA-SQ-VSM**

Family	Strada-SQ	FWHM	151 degrees
Type	Lens	Efficiency	93 %
LED	XT-E	cd/lm	0.200
Color	Clear	Gerber File	Available
Diameter	25 x 25 mm		
Height	6.8 mm		
Style	Square		
Optic Material	PMMA		
Holder Material	-		
Fastening	Screw, pin, glue		
Status	Ready		


**Ordering number CA12891\_STRADA-SQ-VSM**

Family	Strada-SQ	FWHM	151 degrees
Type	Assembly	Efficiency	93 %
LED	XT-E	cd/lm	0.200
Color	Clear	Gerber File	Available
Diameter	25 x 25 mm		
Height	6.95 mm		
Style	Square		
Optic Material	PMMA		
Holder Material	-		
Fastening	Screw, pin, tape		
Status	Ready		



**PRODUCT DATASHEET**  
**Strada-SQ series**  
last update 4/2/2013

**NOTE: The typical divergence will be changed by different color, chip size and chip position tolerance. The typical total divergence is the full angle measured where the luminous intensity is half of the peak value.**



## PRODUCT DATASHEET Strada-SQ series

last update 4/2/2013

### GENERAL INFORMATION

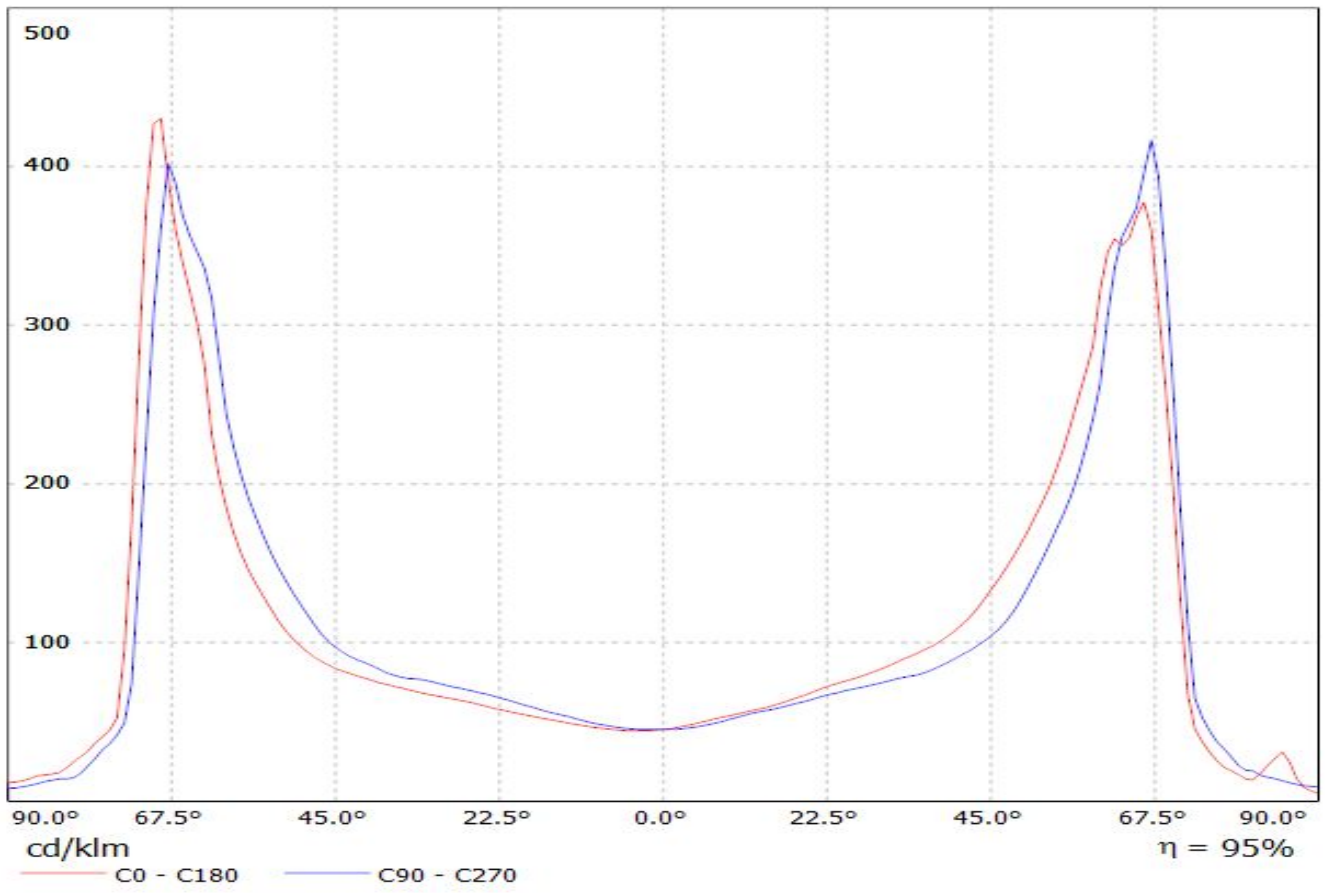
- Product series especially designed & optimized for XT-E series of LEDs.
- Special care taken to make light distribution as uniform as possible.
- Lens material optical grade PMMA with high UV and temperature resistance. Allows use of high current and temperature conditions.

Please find more information about used material from below:

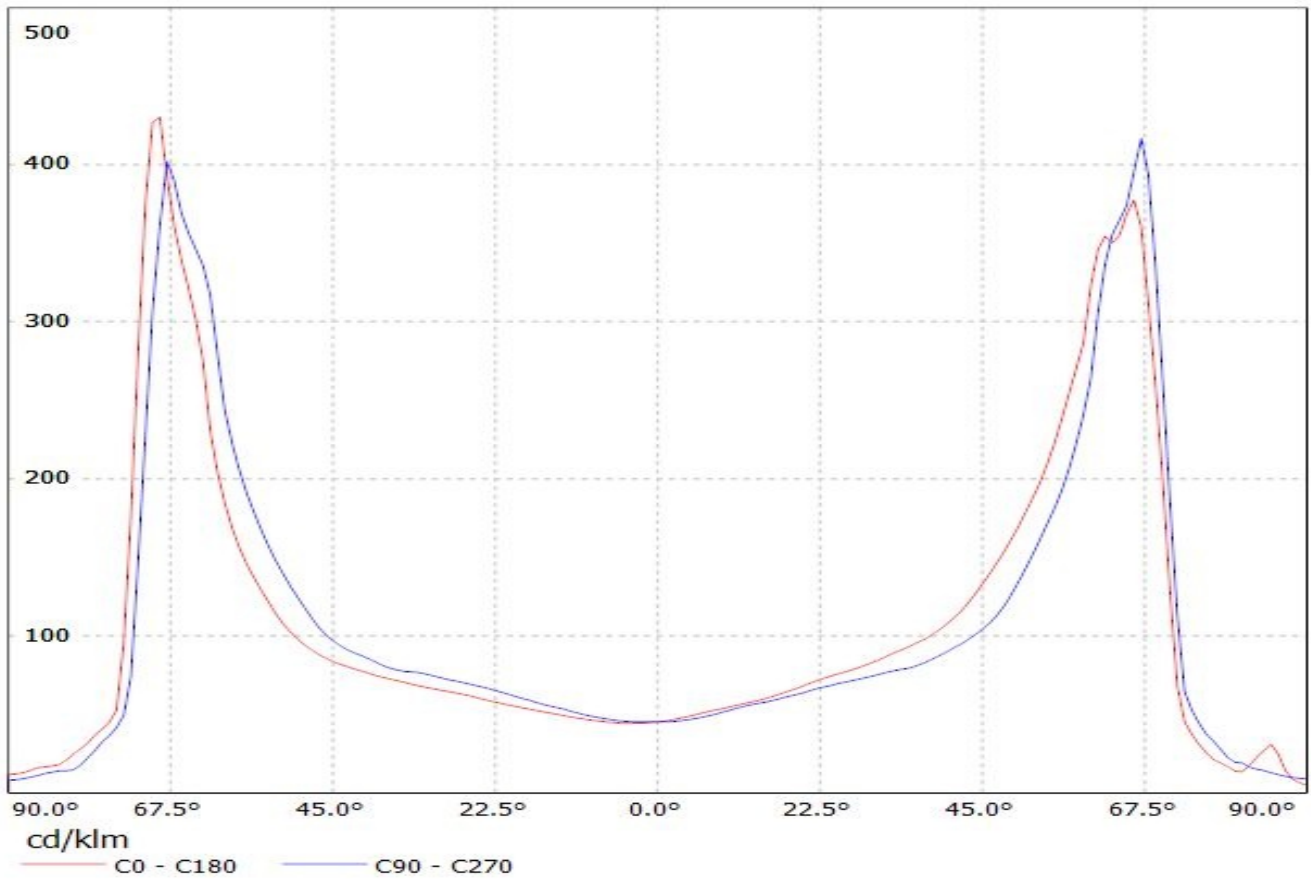
[http://ledil.fi/sites/default/files/Documents/Technical/Material/PMMA%20N%20UL94\\_Yellow%20Card.pdf](http://ledil.fi/sites/default/files/Documents/Technical/Material/PMMA%20N%20UL94_Yellow%20Card.pdf)

<http://ledil.fi/sites/default/files/Documents/Technical/Material/PMMA%20N%20PLEXIGLAS-Datasheet.pdf>

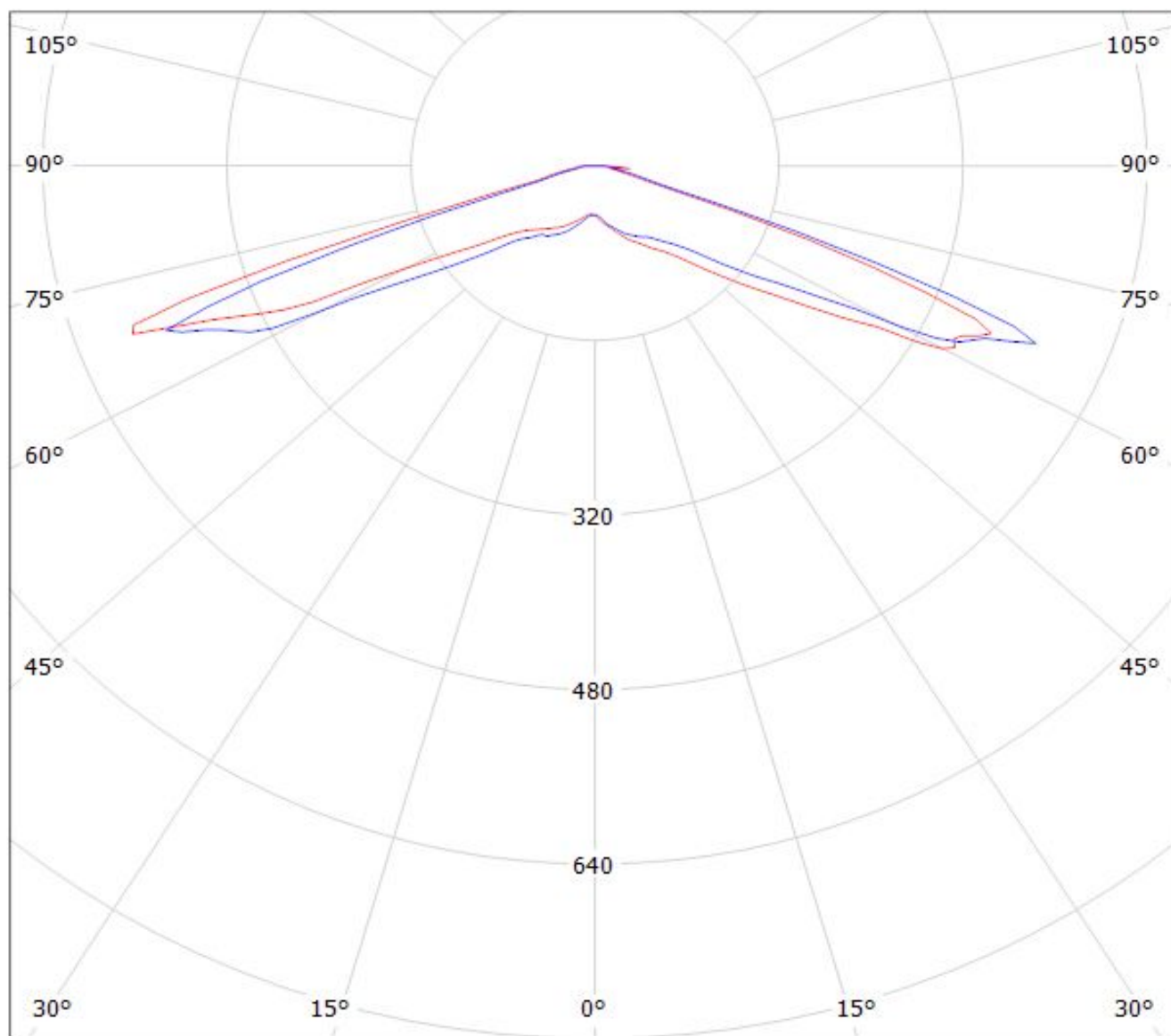
Luminaire: LEDiL Oy C12727\_STRADA-SQ-VSM\_(XT-E) Eff. 93%  
Lamps: 1 x Cree XT-E 100lm @ 250mA



Luminaire: LEDiL Oy CA12891\_STRADA-SQ-VSM\_(XT-E) Eff. 93%  
Lamps: 1 x Cree XT-E 100lm @ 250mA



Luminaire: LEDiL Oy C12727\_STRADA-SQ-VSM\_(XT-E) Eff. 93%  
Lamps: 1 x Cree XT-E 100lm @ 250mA



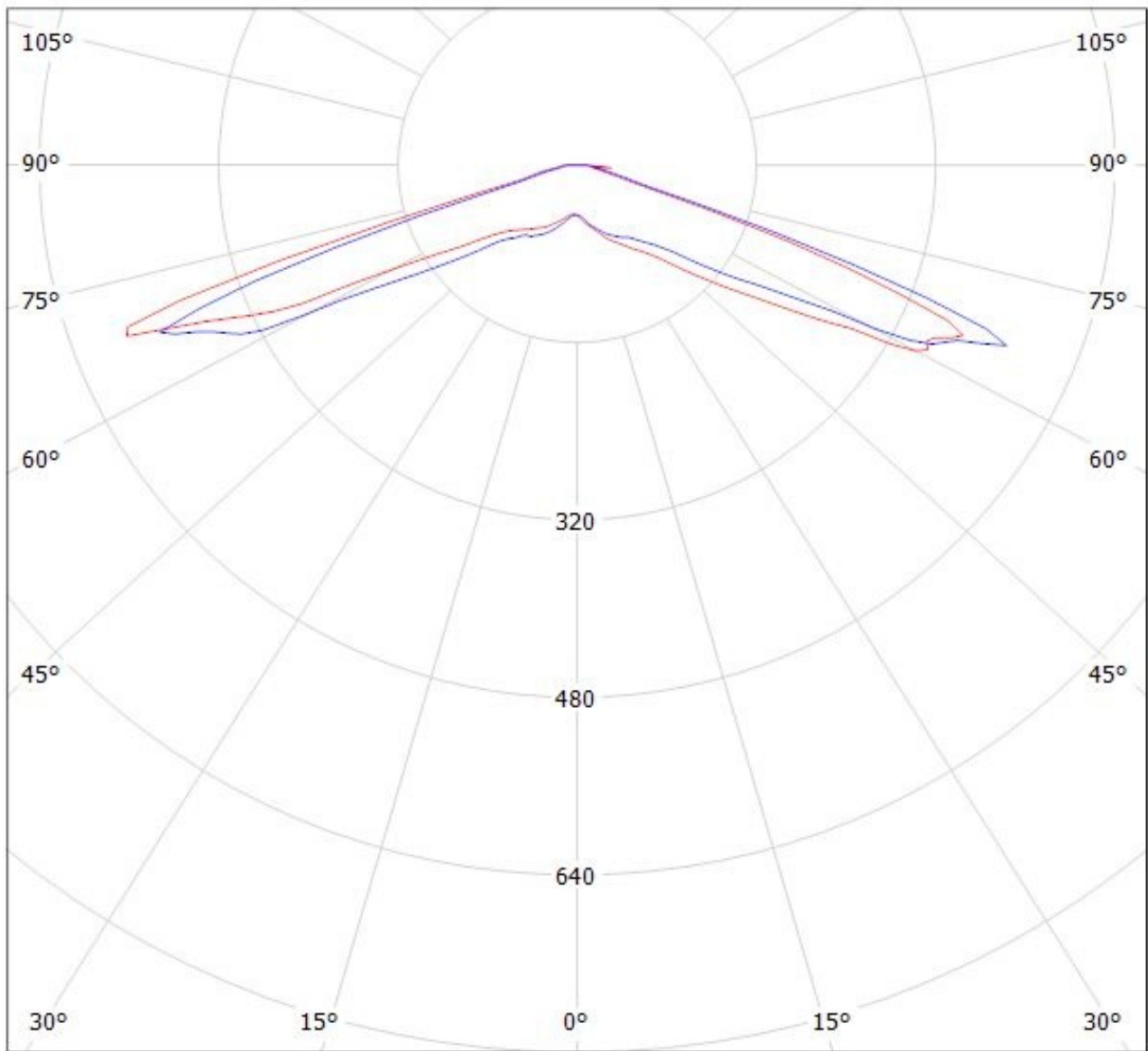
cd/klm

— C0 - C180

— C90 - C270

$\eta = 95\%$

Luminaire: LEDiL Oy CA12891\_STRADA-SQ-VSM\_(XT-E) Eff. 93%  
Lamps: 1 x Cree XT-E 100lm @ 250mA



cd/klm

— C0 - C180    — C90 - C270