

HE 21 W/865

LUMILUX T5 HE | Tubular fluorescent lamps 16 mm, high efficiency



Areas of application

- Public buildings
- Offices
- Shops
- Supermarkets and department stores
- Industry

Product benefits

- Good economy and efficiency
- Up to 20 % more economical than LUMILUX T8
- Up to 50 % smaller volume than comparable T8 lamps
- Natural colors

Product features

- Luminous efficacy: up to 104 lm/W
- Very good lumen maintenance: 90 % throughout the service lifetime of the lamp
- Long average lifetime: up to 24,000 h (with QUICKTRONIC ECG)
- Good color rendering group: 1B (R_a : 80...89)
- Dimmable



Technical data

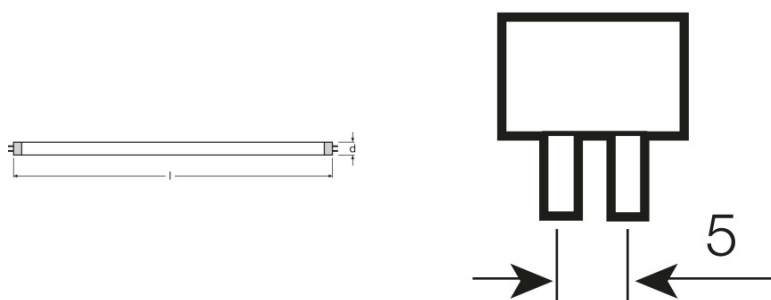
Electrical data

| | |
|-------------------------------------|---------|
| Nominal voltage | 220 V |
| Nominal wattage | 20.60 W |
| Rated lamp efficacy (HF data 25 °C) | 87 lm/W |
| Rated wattage | 20.60 W |

Photometrical data

| | |
|-------------------------------|-----------------------|
| Color rendering index Ra | ≥80 |
| Rated luminous flux | 1750 lm |
| Luminous flux at 25 °C | 1750 lm |
| Luminous flux at 35 °C | 2000 lm |
| Light color | 865 |
| Color temperature | 6500 K |
| Nominal luminous flux | 1750 lm |
| Light color as per EN 12464-1 | LUMILUX Cool Daylight |
| Rated LLMF at 2,000 h | 0.95 |
| Rated LLMF at 4,000 h | 0.92 |
| Rated LLMF at 6,000 h | 0.91 |
| Rated LLMF at 8,000 h | 0.90 |
| Rated LLMF at 12,000 h | 0.90 |
| Rated LLMF at 16,000 h | 0.90 |
| Rated LLMF at 20,000 h | 0.89 |

Dimensions & weight



| | |
|---|-----------|
| Tube diameter | 16 mm |
| Length | 849.0 mm |
| Length with base excl. base pins/connection | 849.00 mm |

Product datasheet

| | |
|------------------|---------|
| Diameter | 16.0 mm |
| Maximum diameter | 16.0 mm |

Temperatures

| | |
|--|---------|
| Rated ambient temp.w.max.luminous flux | 35.0 °C |
|--|---------|

Lifespan

| | |
|--|-----------------------|
| Service life | 19000 h ¹⁾ |
| Lifespan | 24000 h ¹⁾ |
| Rated lamp survival factor at 2,000 h | 0.99 |
| Rated lamp survival factor at 4,000 h | 0.97 |
| Rated lamp survival factor at 6,000 h | 0.95 |
| Rated lamp survival factor at 8,000 h | 0.92 |
| Rated lamp survival factor at 12,000 h | 0.91 |
| Rated lamp survival factor at 16,000 h | 0.90 |
| Rated lamp survival factor at 20,000 h | 0.85 |
| Operation mode LLMF/LSF | HF |
| Rated lamp life time | 24000 h |
| Nominal lamp life time | 24000 h |

¹⁾ With preheat ECG

Additional product data

| | |
|-----------------------------------|--|
| Base (standard designation) | G5 |
| Lamp mercury content | 2.5 mg |
| Appropriate disposal acc. to WEEE | Yes |
| Footnote only for product | Suitable for ECG operation only/Lamp designed for internal luminaire temperatures of 30...40 °C; optimum luminous flux achieved at 35 °C |

Capabilities

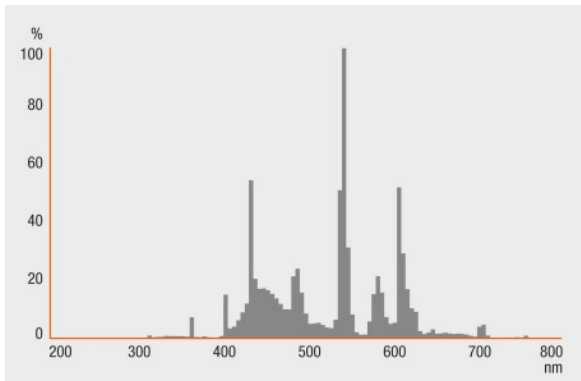
| | |
|---------------------|-----|
| Dimmable | Yes |
| Suitable for indoor | Yes |

Certificates & standards

| | |
|-------------------------|--------------|
| Energy efficiency class | A+ |
| Energy consumption | 23 kWh/1000h |

Light Distribution

Product datasheet



Spectral power distribution

System guarantee

OSRAM System+ Guarantee in combination with OSRAM ECGs

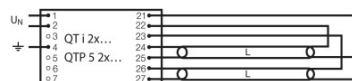
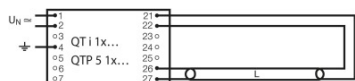


Guarantee

Safety advice

In case of lamp breakage: www.osram.com/brokenlamp

Product datasheet



Circuit diagram

Circuit diagram

Logistical Data

| Product code | Product description | Packaging unit (Pieces/Unit) | Dimensions (height x width x length) | Volume | Gross weight |
|---------------|---------------------|------------------------------|--------------------------------------|-----------------------|--------------|
| 4050300464633 | HE 21 W/865 | Shipping carton box 40 | 196 mm x 90 mm x 897 mm | 15.82 dm ³ | 3673.20 g |
| 4050300591339 | HE 21 W/865 | Shipping carton box 20 | 104 mm x 83 mm x 882 mm | 7.61 dm ³ | 2158.67 g |

The mentioned product code describes the smallest quantity unit which can be ordered. One shipping unit can contain one or more single products. When placing an order, for the quantity please enter single or multiples of a shipping unit.

References / Links

For more information on the system guarantee and the terms and conditions of the guarantee visit

▶ www.osram.com/system-guarantee

Disclaimer

Subject to change without notice. Errors and omission excepted. Always make sure to use the most recent release.

HE 21 W/865

LUMILUX T5 HE | Tubular fluorescent lamps 16 mm, high efficiency

| Product name | Product name ECG | EAN | Nominal current | Nominal wattage + Power loss | Luminous flux at 35 °C | Number of lighting outlets |
|--------------|--------------------------|---------------|-----------------|------------------------------|------------------------|----------------------------|
| HE 21 W/865 | QT-ECO 1x18-21/220-240 S | 4050300794907 | 0.17 A | 23.00 W | 1800 lm | 1 |
| | QT-FIT 5 1x14-35 | 4008321971234 | 0.11 A | 23.00 W | 1900 lm | 1 |
| | QT-FIT 5 2x14-35 | 4008321971258 | 0.22 A | 46.00 W | 1900 lm | 2 |
| | QTi 1x14/24/21/39 GII | 4008321383334 | 0.11 A | 24.00 W | 1900 lm | 1 |
| | QTi 1x21/39 DIM | 4050300870564 | 0.11 A | 23.10 W | 1900 lm | 1 |
| | QTi 1x28/54/35/49 GII | 4008321383358 | 0.11 A | 24.00 W | 1900 lm | 1 |
| | QTi 1x35/49/80 GII | 4008321383372 | 0.11 A | 25.00 W | 1900 lm | 1 |
| | QTi 2x14/24/21/39 GII | 4008321383396 | 0.20 A | 45.00 W | 1900 lm | 2 |
| | QTi 2x21/39 DIM | 4050300870694 | 0.21 A | 45.00 W | 1900 lm | 2 |
| | QTi 2x28/54/35/49 GII | 4008321383419 | 0.20 A | 45.00 W | 1900 lm | 2 |
| | QTi 2x35/49/80 GII | 4008321658951 | 0.23 A | 49.00 W | 2000 lm | 2 |
| | QTi DALI 1x21/39 DIM | 4050300870366 | 0.11 A | 23.10 W | 1900 lm | 1 |
| | QTi DALI 2x21/39 DIM | 4050300870489 | 0.21 A | 45.00 W | 1900 lm | 2 |
| | QTi-DP 1x28/35/LED | | 0.11 A | 24.00 W | | 1 |
| | QTP5 1x14-35 | 4008321329035 | 0.11 A | 24.00 W | 1900 lm | 1 |
| | QTP5 2x14-35 | 4008321329073 | 0.20 A | 45.00 W | 1900 lm | 2 |
| | QTz5 1x21 | 4052899019126 | 0.17 A | 23.00 W | 1800 lm | 1 |