



# LR3 40-4/125

## Line reactor

- 4 % Uk
- Power harmonic damping
- Increases the service life of consumers

Three-phase line and commutation reactor to IEC 61558-2-20, DIN EN 61558-2-20, VDE 0570 part 2-20, VDE 0532 (large reactors)

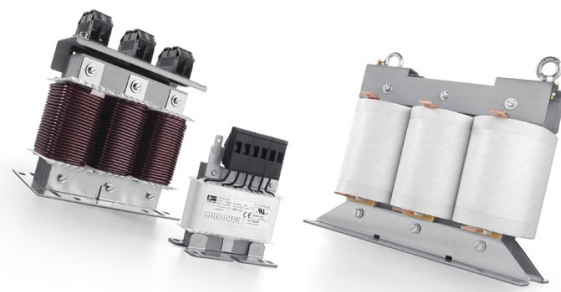
Attenuation of harmonics

Limitation of starting current

Increase of consumer lives

Bridging of main failures

Reduction of commutation effects



## LR3 40-4/125

### Line reactor



#### Input data

|                       |                   |
|-----------------------|-------------------|
| Rated voltage         | 3 x 400 V         |
| Rated voltage (IEC)   | 3 x 690 V         |
| Rated voltage (UL)    | 3 x 600 V         |
| Rated voltage uk      | 3 x 400 V (50 Hz) |
| Rated frequency       | 50 - 60 Hz        |
| Short circuit voltage | 4 %               |
| Voltage drop          | 9,2 V             |
| Rated current         | 125.00 A          |

#### Standards and security

|                         |           |
|-------------------------|-----------|
| Protection index        | IP 00     |
| Safety class (prepared) | I         |
| Cooling method          | AN        |
| Test voltage            | 4,0 kV    |
| Class ISO (IEC)         | F         |
| Class ISO (UL)          | class 155 |

#### General data

|                      |          |
|----------------------|----------|
| Inductivity          | 0.230 mH |
| Inductance deviation | ±10%     |

#### Mechanical data

|               |                   |
|---------------|-------------------|
| Type          | open type         |
| Fixing method | mounting brackets |

**BLOCK** Transformatoren-Elektronik GmbH

Max-Planck-Straße 36-46

27283 Verden

Germany

Phone +49 4231 678-0

Fax +49 4231 678-177