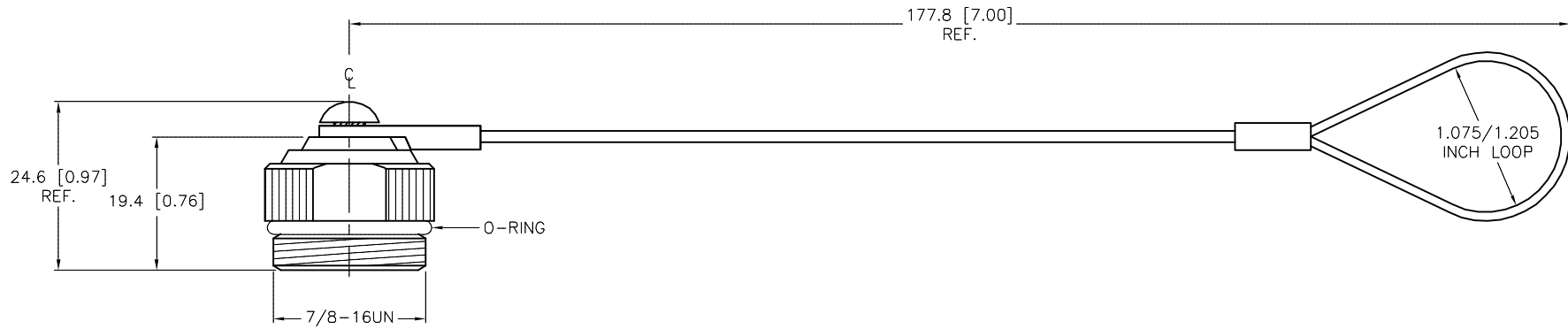
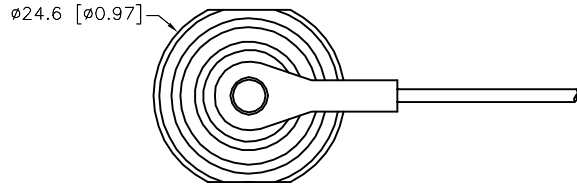


SPECIFICATIONS

| | |
|---------------------|------------------------------|
| CAP MATERIAL/FINISH | NICKEL-PLATED BRASS |
| GASKET MATERIAL | NITRILE (BUNA-N) |
| O-RING MATERIAL | NITRILE (BUNA-N) |
| CABLE MATERIAL | STAINLESS STEEL/NYLON COATED |



SOURCE DRAWING - FOR REFERENCE ONLY

| | | | | | | | |
|-------------------|--|---|---------------------|--|--------------------|--|-----------------------|
| RELATED DOCUMENTS | | 3RD ANGLE PROJECTION | | THIS DRAWING IS CONFIDENTIAL AND THE PROPERTY OF TURCK INC. USE OF THIS DOCUMENT WITHOUT WRITTEN PERMISSION IS PROHIBITED. | | TURCK INC High Technology Sensors and Automation Controls 3000 CAMPUS DRIVE MINNEAPOLIS, MN 55441 1-800-544-7769 (763) 553-7300 (763) 553-0708 fax turck.com | |
| 1. | | | DRFT | SWC | DATE | 08/03/94 | DESCRIPTION RSM-CC |
| 2. | | | APVD | | SCALE | 1 = 1.0 | |
| 3. | | ALL DIMENSIONS DISPLAYED ON THIS DRAWING ARE FOR REFERENCE ONLY CONTACT TURCK FOR MORE INFORMATION | UNIT OF MEASUREMENT | | IDENTIFICATION NO. | | REV |
| 4. | | | MILLIMETER [INCH] | | U5134 | | E |
| MATERIAL | | SEE SPECIFICATIONS | | DO NOT SCALE THIS DRAWING | | FILE: U5134 | SHEET 1 OF 1 |
| FINISH | | SEE SPECIFICATIONS | | | | | |

| | | | | |
|-----|----------------------------|-----|----------|---------|
| E | UPDATE LANYARD ORIENTATION | KMY | 08/19/14 | 46768 |
| REV | DESCRIPTION | BY | DATE | ECO NO. |