

ATM-01

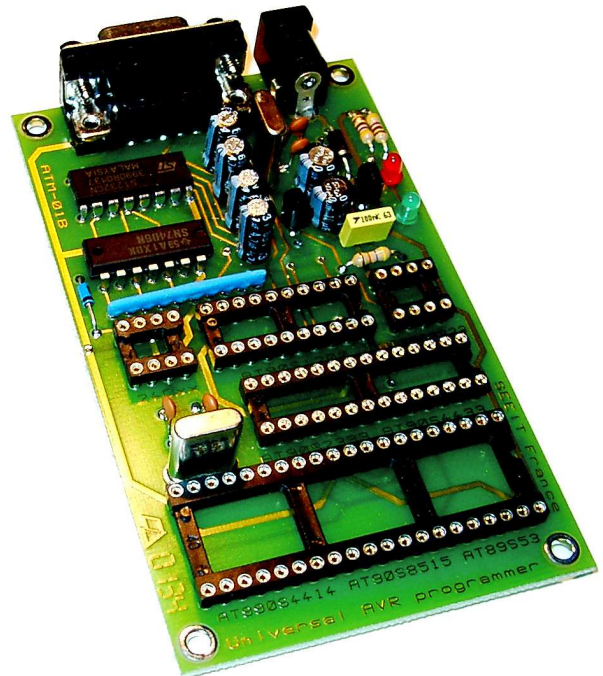
Atmel AVR microcontroller programmer

AT90Sxxxx / AT89Sxxxx / ATmegaxxx / ATtinyxx and 24Cxx



Presentation:

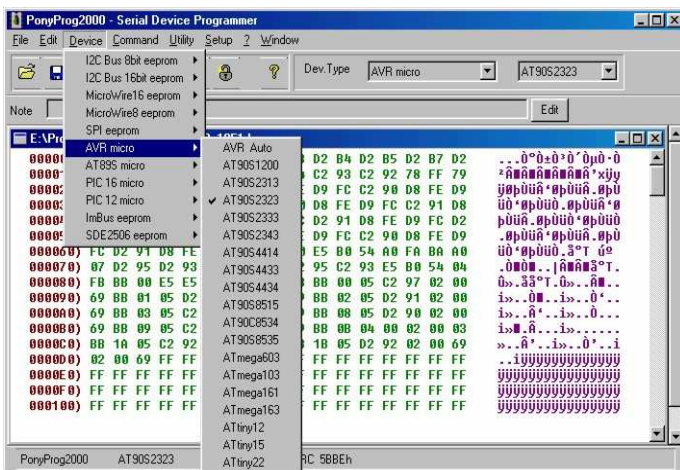
The ATM-01 allows you to program the new generation of AVR microcontrollers in 8-bit technology from Atmel (AT89Sxxxx, AT90Sxxxx, ATtinyxx, ATmegaxxx families), as well as serial EEproms (24Cxx family). It supports devices in DIP 8, 20, 28 and 40 pin packages allowing you to program different models of memory (ATmega in TQFP64 packages require an optional adapter). It is also equipped with a genuine RS232 interface enabling the user to connect to the serial port (supplied cable) of any compatible PC, it operates with the ICprog and Ponyprog software in French under Windows 95/98/ME/NT/2000/XP.



Includes:

- A programmer (ISO9002 compliant).
- A serial extension lead.
- Software on a 3 1/2 diskette.
- Very comprehensive and clear instructions for use in file layout editable under Word.

Requires a power pack of continuous 6 to 12V constant or non constant.



Software:

- Accepts files in BIN, HEX, H8, H16 and EEP formats.
- Editing of the program loaded in the buffer (Flash+EEPROM).
- Functions: read, program, blank test, verify, erase.
- Editing of the processor configuration registers (fuses).
- Menus in French.
- Compatible with ICprog and Ponyprog.
- Operates with Windows 95/98/ME/NT/2000/XP.

List of devices supported with Ponyprog 2.06f:

AT89Sxxxx	AT89S53	AT89S8252						
AT90Sxxxx	AT90S1200	AT90S2313	AT90S2323	AT90S2333	AT90S2343	AT90S4414	AT90S4433	AT90S4434
	AT90S8515	AT90C8534	AT90S8535					
ATmegaxxx	ATmega8	ATmega16	ATmega32	ATmega64	ATmega103	ATmega128	ATmega161	ATmega162
	ATmega163	ATmega169	ATmega323	ATmega603	ATmega8515	ATmega8535		
ATtinyxx	ATtiny12	ATtiny15	ATtiny22	ATtiny26	Attiny2313			
24Cxx	X24C01	24C01A	24C02	24C04	24C08	24C16	24C32	24C64
	AT24C128	M24C128	AT24C256	M24C256	AT24C512	24C515		

Note: The references in blue letters do not exist in DIP packages and require an optional adapter TQFP48 or TQFP64.