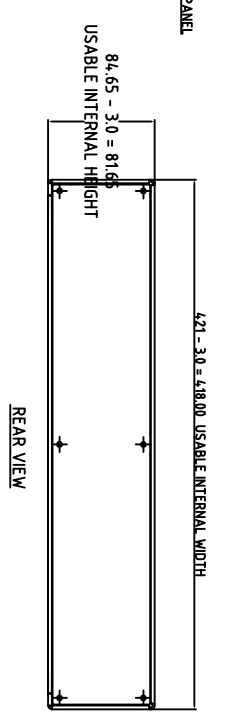
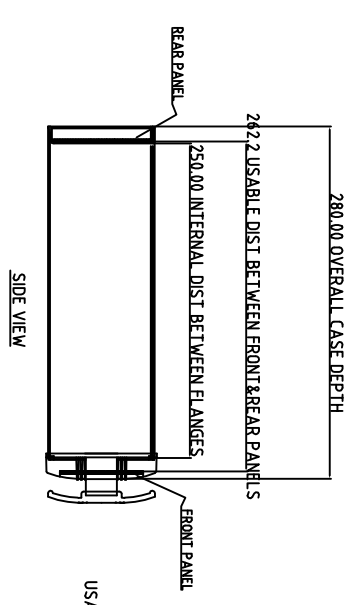
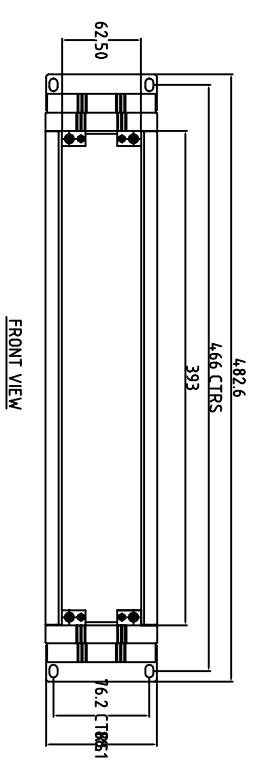
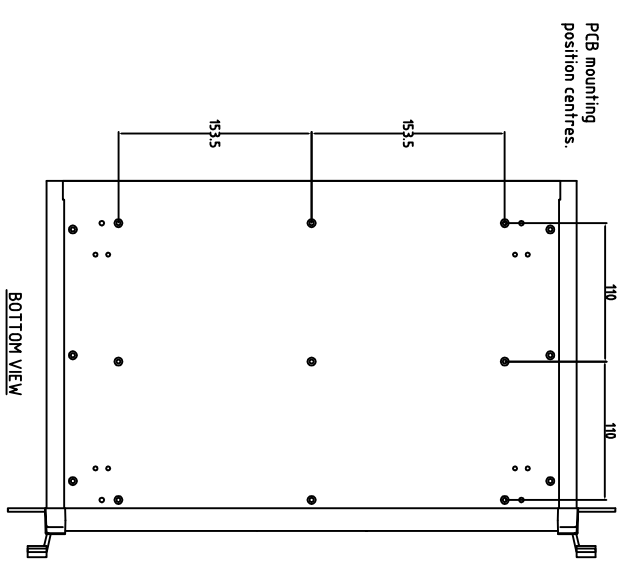


FIRST ANGLE PROJECTION



2U x 280MM UNIMET RACK CASE

FRONT BEZEL: POWDER COATED RAL 7040  
 REAR SHELL ASSEMBLY POWDER COATED RAL 7035  
 REAR RECESS OF BEZEL & FRONT MATING FLANGE OF SHELL TO BE MASKED  
 MATERIAL: CASE BODY & REAR PANEL - 150mm AL

Tolerances unless otherwise stated:  
 General tolerances  $\pm 0.20$   
 Resultant tolerances between hole centers  $\pm 0.15$   
 Tolerances on hole diameters  $\pm 0.05$   
 Angles  $\pm 0.5^\circ$   
 Surface finish  $\sqrt{32}$

Required Finish:

Scale: 1:2

ALL DIMENSIONS IN MILLIMETRES

DO NOT SCALE



www.metcase.com

METCASE ENCLOSURES  
 15 Brunel Way,  
 Segensworth East, Fareham,  
 Hampshire, PO15 5TX, UK.

Part Name  
 19" x 2U (2HE) x 280 dp

Part Number  
 M5619225

Drawn By:  
 Ian Cox

Checked By:

Drawing Number  
 M5619225

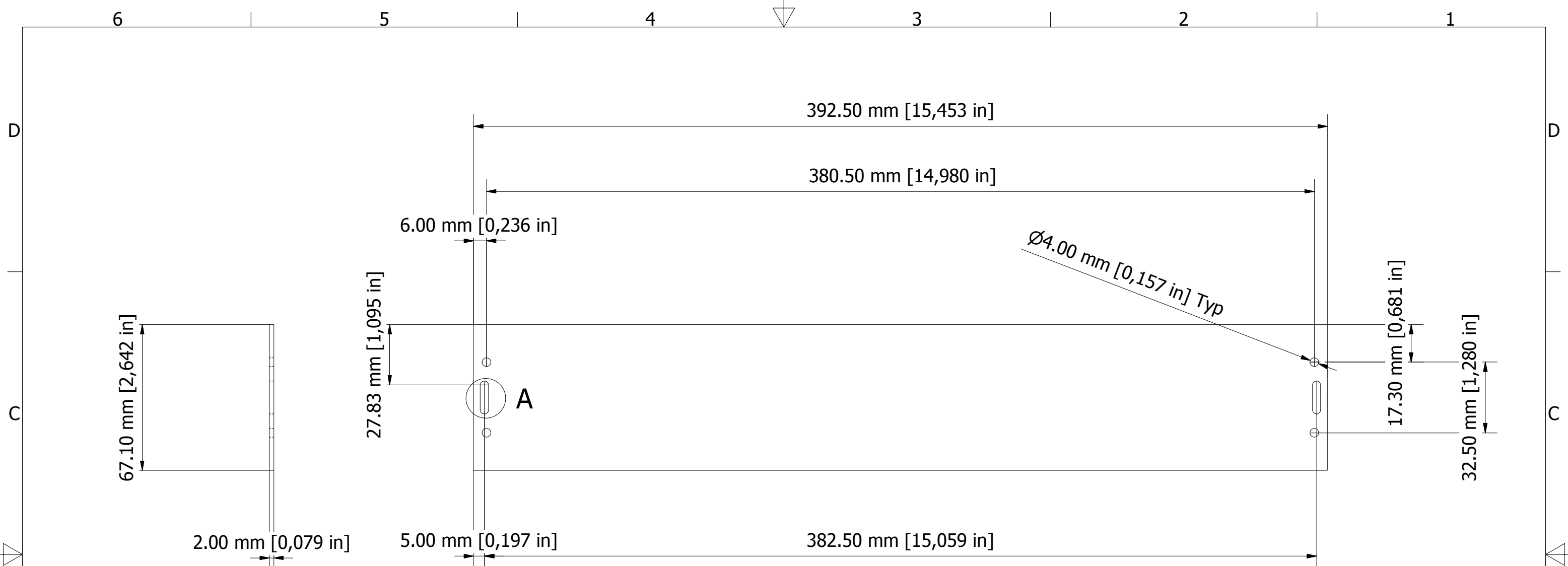
Date drawn  
 April '12

Material Spec.

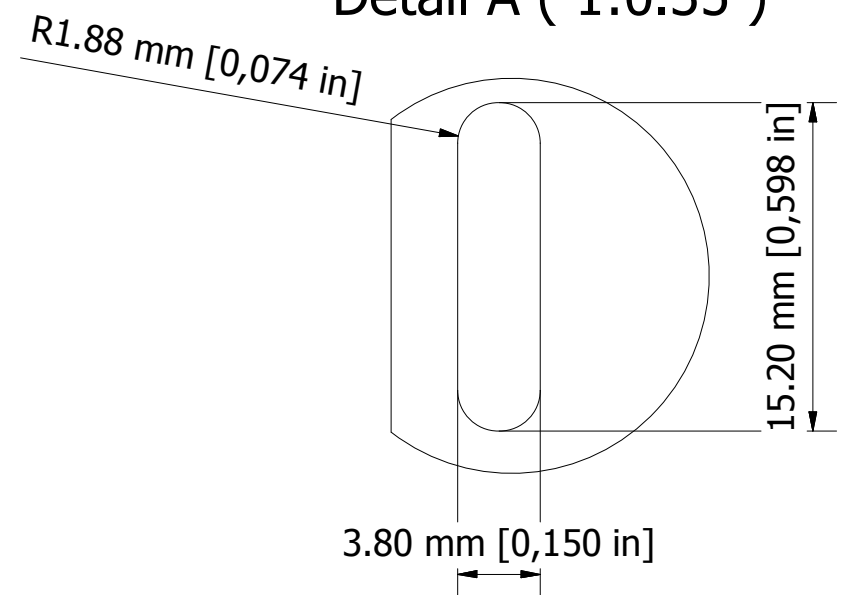
Sheet 1 of 1

OKW ENCLOSURES LTD (DATE AS SHOWN). THIS DRAWING CONTAINS PROPRIETARY INFORMATION OF OKW ENCLOSURES LTD AND IS TENDERED SUBJECT TO THE FOLLOWING CONDITIONS: THE INFORMATION BE RETAINED IN CONFIDENCE, NOT BE REPRODUCED OR COPIED, AND NOT BE USED OR INCORPORATED IN ANY PRODUCT, UNLESS PERMISSION IS OBTAINED IN WRITING FROM OKW ENCLOSURES LTD.

A0



Detail A ( 1:0.35 )



- Notes:
1. All panels must be cut from sheet such that the metal grain runs horizontally.
  2. Panels must be sheared from the same side.
  3. Edges must be clean and free from burrs or tool witnesses.
  4. Panel faces must be scratch free.
  5. An instrument quality anodised finish is required.
  6. Handle with care during manufacture.
  7. Panels are to be supplied wrapped in protective paper.

FIRST ANGLE PROJECTION

Designed by L Clark	Description 2U (2HE) Front Panel Kit	Date 19/04/2012	Scale 1:1
<b>METCASE ENCLOSURES</b> 15 Brunel Way, Segensworth East, Fareham, Hampshire, UK. PO15 5TX Tel: +44 (0)1489 583858 Email: metcase@okw.co.uk		<b>METcase™</b> www.metcase.com Part Number <b>M5900020</b>	
		Issue <b>1</b>	Sheet <b>1 / 1</b>

© OKW Enclosures Ltd (Date as shown). This drawing contains proprietary information of OKW Enclosures Ltd and is tendered subject to the following conditions. The information be retained in confidence, not be reproduced or copied, and not be used or incorporated in any product, unless permission is obtained in writing from OKW Enclosures Ltd.