

**Power Relay RM 8**

- 2 pole 25 A, 2 CO contacts
- DC- or AC-coil
- Mechanical indicator
- Push-to-test button
- Chassis- or DIN-rail mount

**Applications**

Cleaning equipment, heating and cooling equipment



F0165-B

**Approvals**

VDE REG.-Nr. 40003144, **UL** us E214025  
 Technical data of approved types on request

Contact data	RM8
Contact configuration	2 CO contacts
Contact set	single contact
Type of interruption	micro disconnection
Rated voltage / max. switching voltage AC	400 VAC
Rated current	25 A
Maximum breaking capacity AC	6000 VA
Limiting making capacity, max 20 ms	60 A
Contact material	AgCdO
Rated frequency of operation with / without load	16/100 min <sup>-1</sup>
Operate- / release time DC coil	max 15/10 ms
Bounce time DC coil NO / NC contact	max 4/6 ms

**Contact ratings**

Type	Contact Load	Ambient temp. [°C]	Cycles
<b>IEC 61810</b>			
RM80	CO 25 A, 250 VAC, cosφ=1	35°C	10x10 <sup>3</sup>
<b>UL 508</b>			
RM80	NO / NC 25 A, 240 VAC, 1 phase per pole, general purpose	40°C	6x10 <sup>3</sup>
RM80	NO / NC 25 A, 415 VAC, resistive, AC-Coil	45°C	10x10 <sup>3</sup>
RM80	NO / NC 25 A, 415 VAC, resistive, DC-Coil	50°C	10x10 <sup>3</sup>

**Coil data**

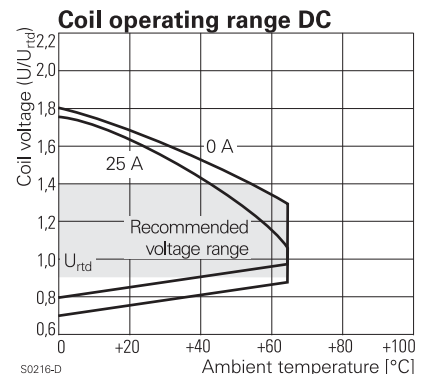
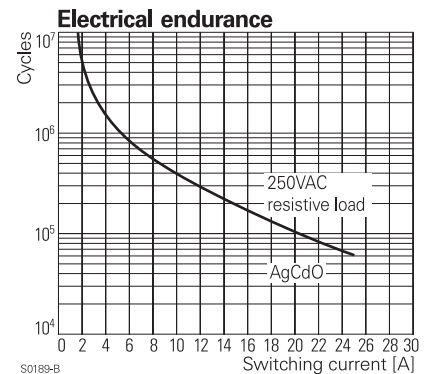
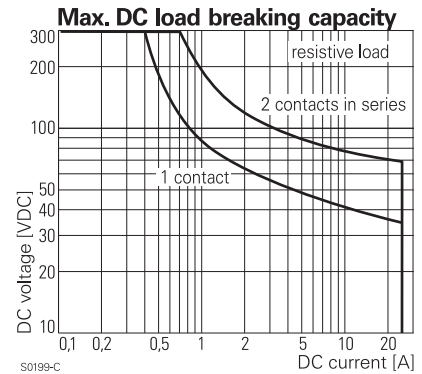
Rated coil voltage range DC coil	6...220 VDC
AC coil	6...400 VAC
Operative range to IEC 61810	2

**Coil versions, DC-coil**

Coil code	STD	LED	PD*	LED+	Rated voltage VDC	Operate voltage VDC	Release voltage VDC	Coil resistance Ohm	Rated coil power W
006	L06	0A6	LA6		6	4.5	0.6	32±10%	1.1
012	L12	0B2	LB2		12	9.0	1.2	110±10%	1.3
<b>024</b>	<b>L24</b>	<b>0C4</b>	<b>LC4</b>		<b>24</b>	<b>18.0</b>	<b>2.4</b>	<b>475±10%</b>	<b>1.2</b>
048	L48	0E8	LE8		48	36.0	4.8	2000±10%	1.2
060	L60	0G0	LG0		60	45.0	6.0	2850±10%	1.3
110	M10	1B0	MB0		110	82.5	11.0	10000±12%	1.2
221	N21	2C1	NC1		220	165.0	22.0	40000±15%	1.2

All figures are given for coil without preenergization, at ambient temperature +23°C

\*) Protection diode PD; standard polarity: +A1 / -A2



**Power Relay RM 8 (Continued)**

**Coil versions, AC-coil 50 / 60 Hz**

Coil code	Rated voltage	Operate voltage	Release voltage	Coil resistance	Rated coil power	
STD	LED	50 / 60 Hz	50 / 60 Hz	Ohm	50 / 60 Hz	
	VAC	VAC	VAC		VA	
506	R06	6	4.8 / 5.1	2.4	4.7 ± 10%	2.86 / 2.36
512	R12	12	9.6 / 10.2	4.8	19.5 ± 10%	2.71 / 2.27
<b>524</b>	<b>R24</b>	<b>24</b>	<b>19.2 / 20.4</b>	<b>9.6</b>	<b>80 ± 10%</b>	<b>2.62 / 2.00</b>
548	R48	48	38.4 / 40.8	19.2	320 ± 10%	2.60 / 2.17
560	R60	60	48.0 / 51.0	24.0	500 ± 10%	2.62 / 2.20
615	S15	115	92.0 / 97.8	46.0	1850 ± 10%	2.65 / 2.22
<b>730</b>	<b>T30</b>	<b>230</b>	<b>184.0 / 195.5</b>	<b>92.0</b>	<b>7500 ± 10%</b>	<b>2.69 / 2.26</b>
900	V00	400	320.0 / 340.0	160.0	23500 ± 15%	2.61 / 2.20

All figures are given for coil without preenergization, at ambient temperature +23°C

**Insulation**

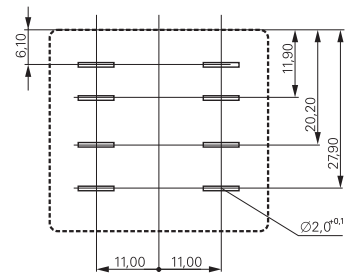
Dielectric strength coil-contact circuit	2500 V <sub>rms</sub>
open contact circuit	1500 V <sub>rms</sub>
adjacent contact circuits	4000 V <sub>rms</sub>
Clearance / creepage coil-contact circuit	≥ 4/14.9 mm
adjacent contact circuits	≥ 15.3/15.3 mm
Material group of insulation parts	IIIa
Insulation to IEC 61810-1	
Type of insulation coil-contact circuit	basic
open contact circuit	micro disconnection
adjacent contact circuits	basic
Rated insulation voltage	250 V
Pollution degree	3
Rated voltage system	230 / 400 V
Overtoltage category	III

**Other data**

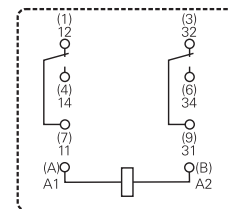
Mechanical endurance	10x10 <sup>6</sup> cycles
Material	RoHS - Directive 2002/95/EC compliant as per product date code 0415
Environment	
Ambient temperature range DC coil	-45...+65°C
AC coil	-45...+40°C
Vibration resistance (function) NO / NC contact	10/5 g, 30...150 Hz
Category of protection	RT1 - dust protected
Processing	
Relay weight	81 g
Packaging unit	10/25 pcs

**Terminal assignment**

Bottom view on pins



S0269-AG

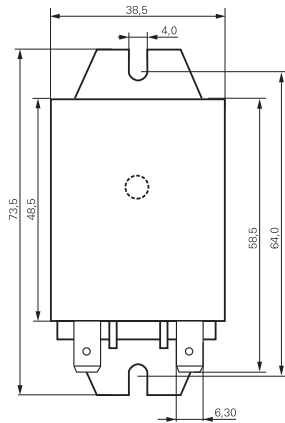


S0269-AD

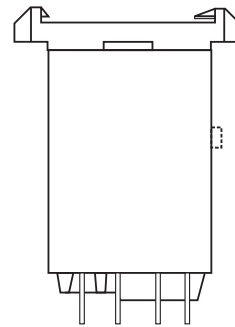
**Power Relay RM 8 (Continued)**

**Dimensions**

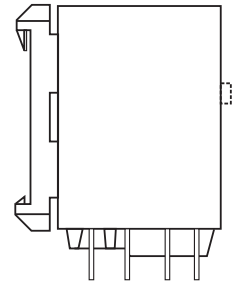
Cover with mounting brackets, 6.3 mm quick connect terminals



Cover with DIN-snap-on attachment  
horizontal



vertical



S0298-BC

S0298-BD

S0298-BE

**Product key**

Typical product key

**RM 8 0 9 024**

**Type**

**RM** Power relay RM 8

**Contact configuration**

**8** 2 CO contacts (2 form C), 25 A

**Version**

**0** AgCdO, without test button      **3** AgCdO, with test button

**Enclosure**

- 5** cover with mounting brackets, 6.3 mm quick connect terminals
- 8** cover with DIN-snap-on attachment, horizontal, 6.3 mm quick connect terminals
- 9** cover with DIN-snap-on attachment, vertical, 6.3 mm quick connect terminals

**Coil**

Coil code: please refer to coil versions table, preferred types in bold print

Product key	Contacts	Version	Enclosure	Coil	Coil	Part number
RM805024	2 CO contacts 25 A	without test button	mounting brackets quick c. 6.3 mm	DC-coil	24 VDC	2-1393844-7
RM805524				AC-coil	24 VAC	2-1393147-9
RM805615					115 VAC	3-1393147-1
RM805730					230 VAC	3-1393147-3
RM808024			DIN-snap-on horizontal	DC-coil	24 VDC	2-1393844-9
RM808524				AC-coil	24 VAC	3-1393147-7
RM808730					230 VAC	5-1393149-7
RM809024			DIN-snap-on vertical	DC-coil	24 VDC	5-1393149-8
RM809615				AC-coil	115 VAC	3-1393147-8
RM809730					230 VAC	3-1393147-9
RM835024		with test button	mounting brackets quick c. 6.3 mm	DC-coil	24 VDC	4-1393147-1
RM835524				AC-coil	24 VAC	4-1393147-3
RM835615					115 VAC	4-1393147-4
RM835730					230 VAC	4-1393147-6
RM838024			DIN-snap-on horizontal	DC-coil	24 VDC	4-1393147-8
RM838524				AC-coil	24 VAC	5-1393147-0
RM838730					230 VAC	5-1393147-1
RM839024			DIN-snap-on vertical	DC-coil	24 VDC	5-1393147-4
RM839524				AC-coil	24 VAC	5-1393147-5
RM839730					230 VAC	5-1393147-6