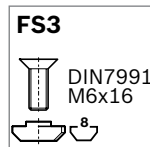
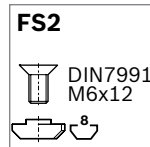
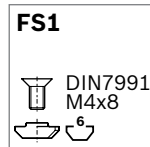
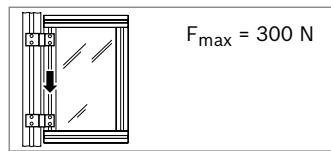
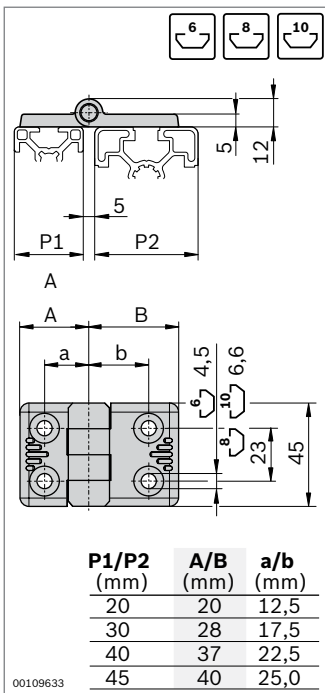


### Hinge, aluminum



- ▶ Aluminum hinge for all slot systems
- ▶ Assembly possible on solid surface elements
- ▶ High-quality version
- ▶ Conductive version
- ▶ Suitable for use under clean room conditions thanks to abrasion-resistant guide bushings



Hinge, aluminum	P1 (mm)	P2 (mm)	ESD	No.	FS
	20	20		2 <b>3 842 544 525</b>	4xFS1
	20	30		2 <b>3 842 544 526</b>	2xFS1, 2xFS2
	30	30		2 <b>3 842 544 527</b>	4xFS2
	30	40		2 <b>3 842 544 528</b>	2xFS2, 2xFS3
	30	45		2 <b>3 842 544 529</b>	2xFS2, 2xFS3
	40	40		2 <b>3 842 544 530</b>	4xFS3
	45	45		2 <b>3 842 544 531</b>	4xFS3

Material: diecast aluminum; nickel-plated  
 Fastening material: steel; galvanized  
 Scope of delivery: incl. fastening material (FS)

