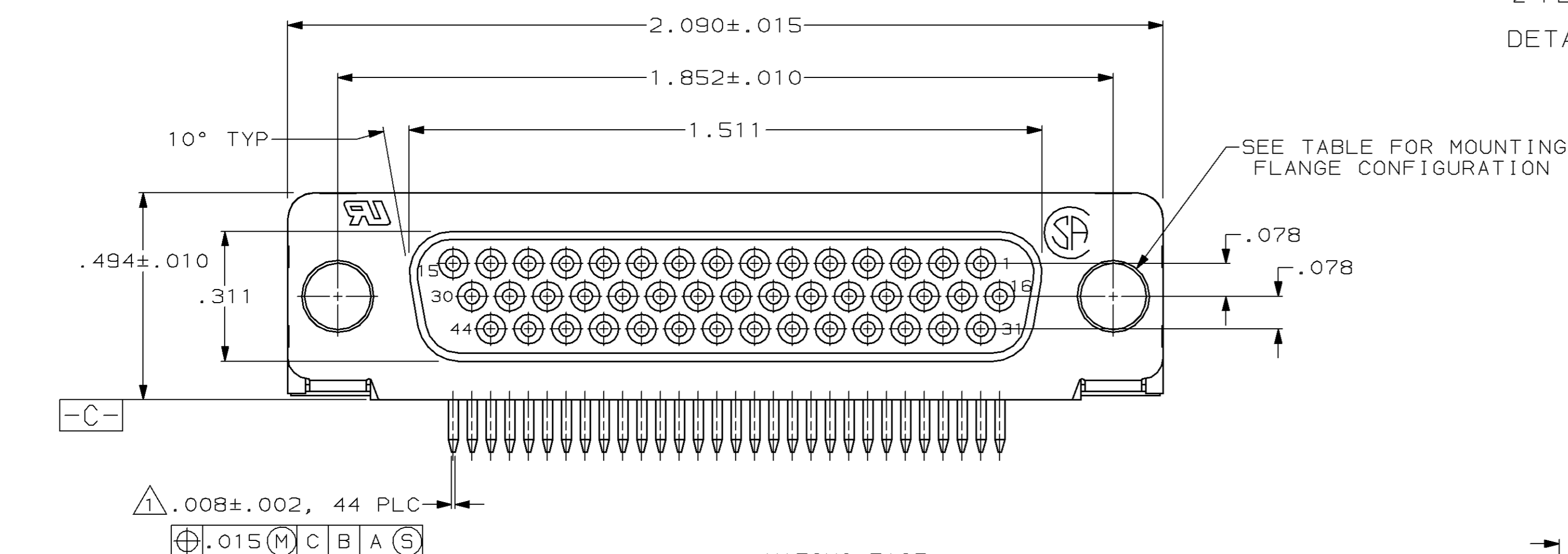
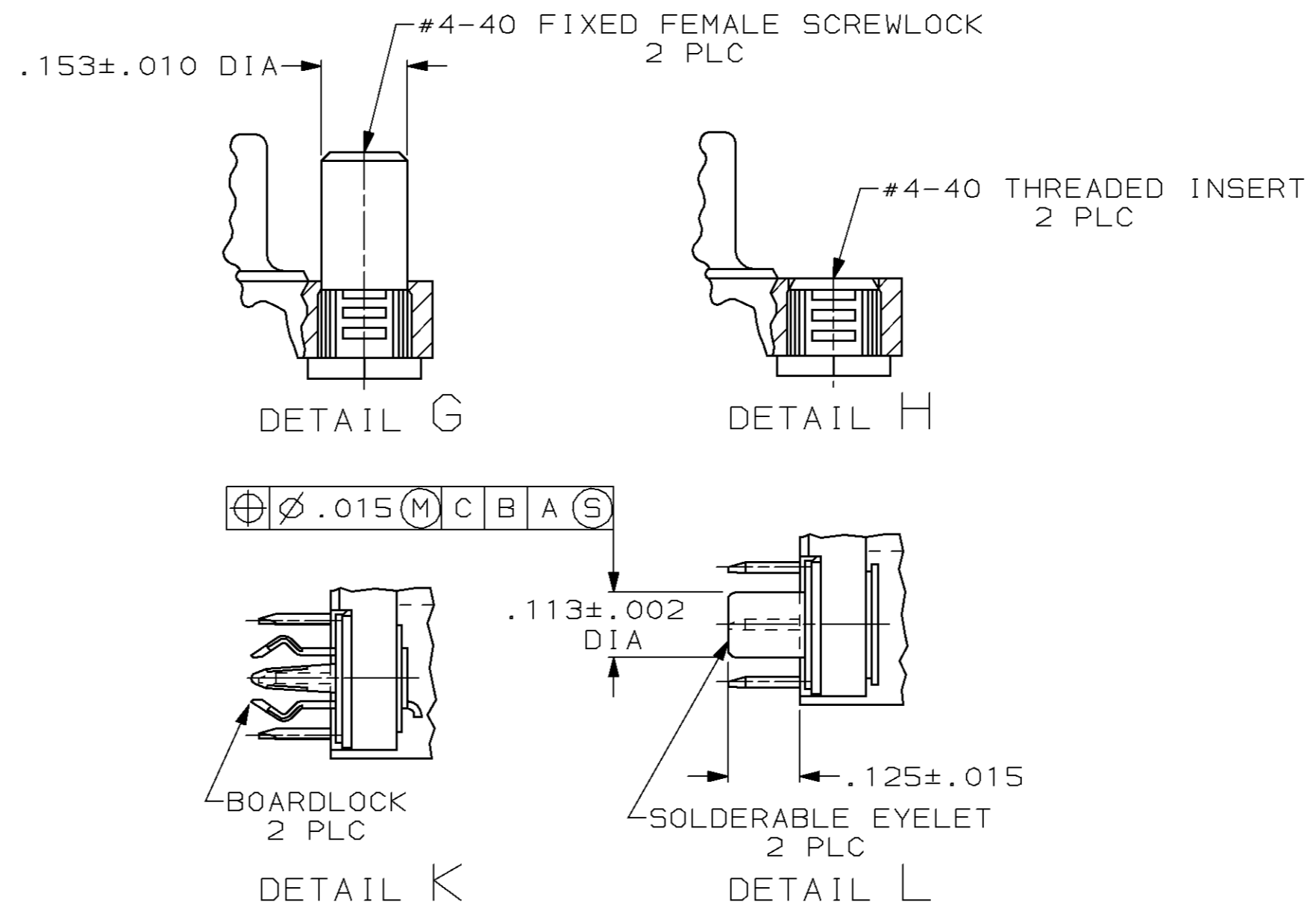
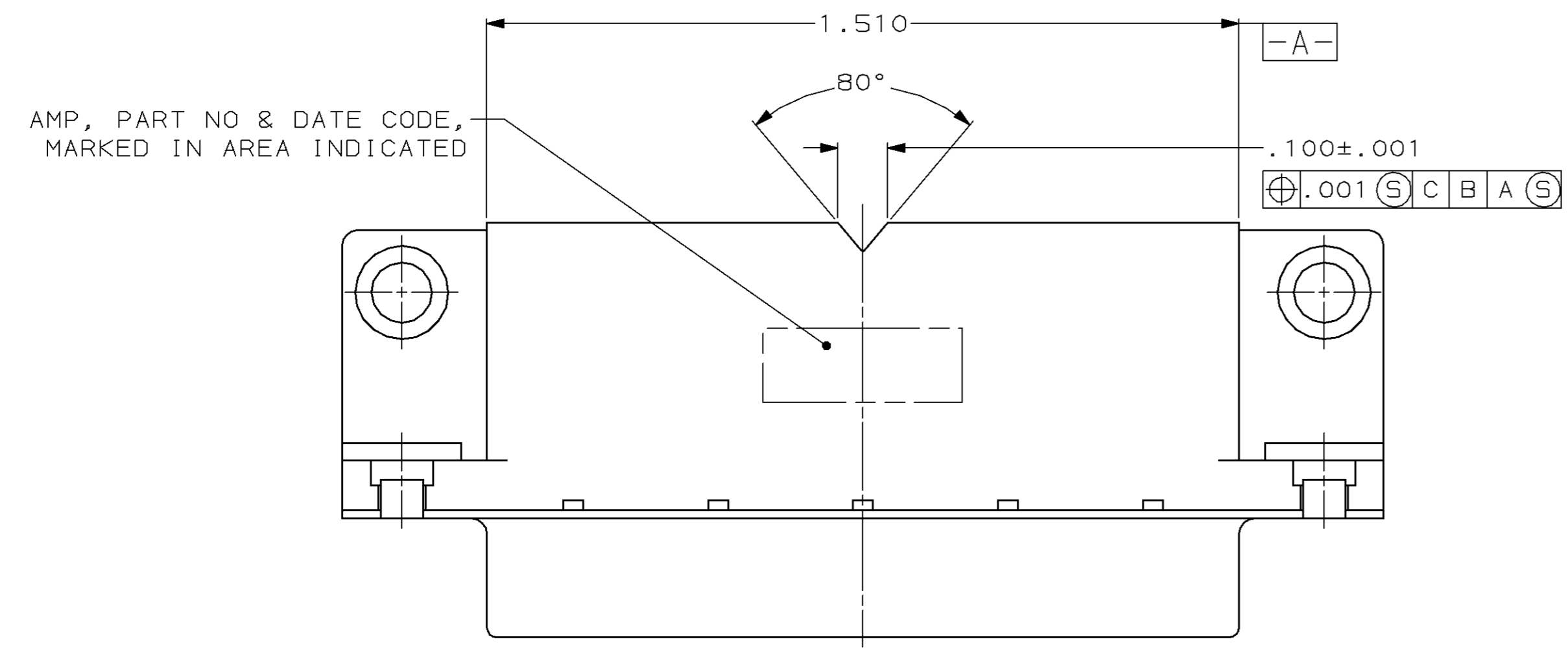
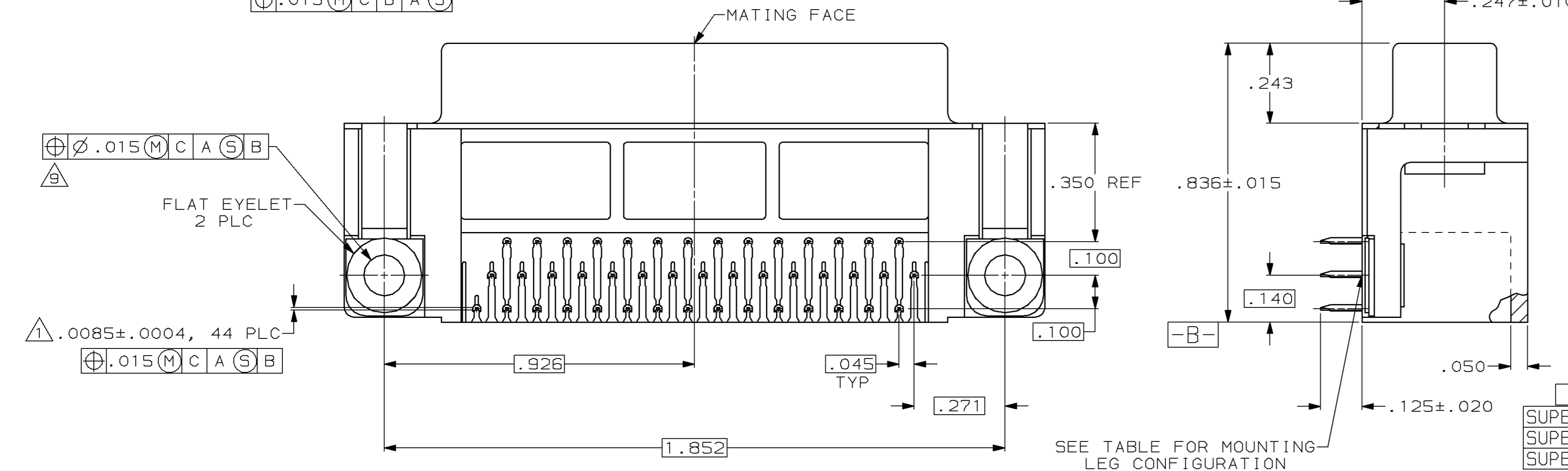


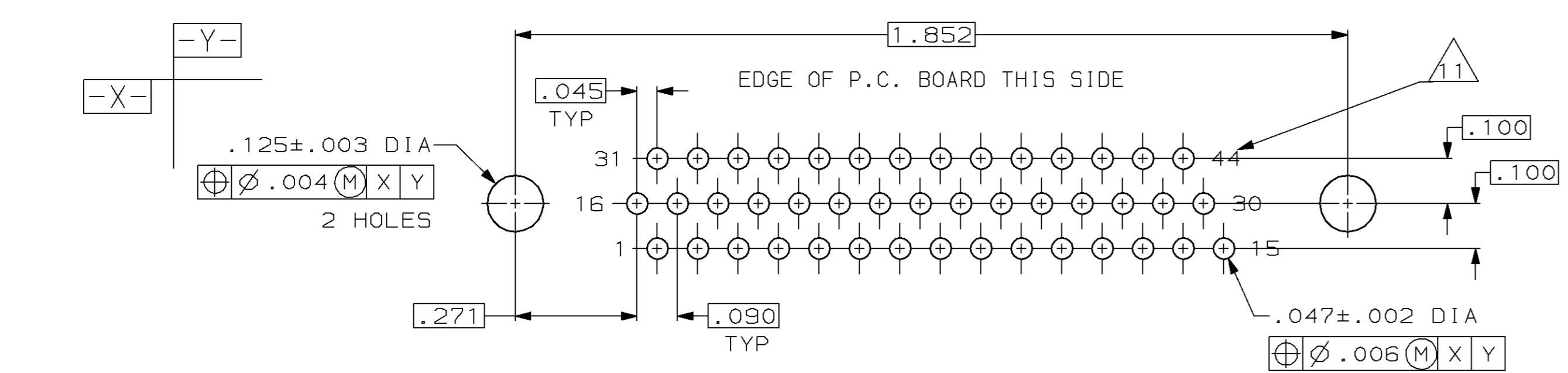
LOC	DIST	P	F	ZONE	LTR	REVISIONS	DATE	APPD
BD	77					REV & REDRAWN ECN-2096	-	-
						REVISD ECN-2338	7-22-88	CR PK
						REVISD ECN-BD2359	9-2-88	PK
						REACTIVATED -4 ECN BD2615	11-8-88	MG
						REVISD ECN-BD2613	11-11-88	PK
						REVISD ECN-BD2693	1-10-89	PAK
						REVISD ECN-BD2883	2-27-89	PAK
						REVISD ECN-BD3020	6-20-89	PAK
						REVISD ECN-BD3207	8-28-89	PAK
						REVISD ECN-BD3354 & BD3436	10-12-89	PAK
						REV PER ECN BD3751	03/26/90	PAK
						REV PER ECN BD3633	05/23/90	PAK
						RELEASED 2-748482-0	09/04/90	PAK
						REV PER ECN BD4960	6-20-91	CR
						REVISD PER ECN BD5477	01/22/92	CR
						REV PER ECN BD6143 AND BD6264	05/11/92	SWB
						REACTIVATED 1-2 PER ECN BD6749	09/21/92	SB
						REV PER EC 0020-849-94	08/15/94	MP
						SUPSD -4 PER EC 0020-483-95	22 AUG 95	DB
						ADDED 2--1 PER EC 0020-872-95	22 AUG 95	DB
						SUPSD -12 PER EC 0020-1152-95	26 MAR 96	RT
						SUPSD -6, -14, -15, -19 & OBS -12 PER EC 0020-493-96	14 JAN 97	RT



1. POSITION TOLERANCE APPLIES AT TIP ONLY.
2. NYLON, 94 V-0 RATED, BLACK.
3. PHOSPHOR BRONZE PER QQ-B-750.
4. CARBON STEEL PER ASTM A109.
5. FLAT EYELETS & SOLDERABLE EYELETS: BRASS; BOARDLOCKS: COPPER ALLOY; INSERTS & SCREWLOCKS: ZINC.
6. GOLD PLATING PER MIL-G-45204, NICKEL PLATING PER QQ-N-290, TIN PLATING PER MIL-T-10727.
7. BRIGHT TIN PLATED.
8. FLAT EYELETS: BRIGHT TIN PLATED; SOLDERABLE EYELETS & BOARDLOCKS: TIN-LEAD PLATED; SCREWLOCKS: CLEAR CHROMATE; INSERTS: CLEAR CHROMATE.
9. POSITION TOLERANCE APPLIES TO .125 DIA HOLE OR TO DIAMETER ESTABLISHED BY LEGS OF BOARDLOCK.
10. PLATED WITH GOLD (SEE TABLE FOR THICKNESS) ON MATING END, .000120 MIN TIN-LEAD ON SOLDER END, ALL OVER .000050 MIN NICKEL.
11. POSITION NUMBERS SHOWN FOR REFERENCE ONLY.
12. THIS CONNECTOR IS RATED TO A TEMPERATURE OF 220° C MAX AND 90 SECOND MAXIMUM EXPOSURE TIME.



ADVANCE PART NO	TUBES	DETAIL K	DETAIL H	.000030 MIN	2-748482-1
-	-	DETAIL K	DETAIL H	.000010 MIN	2-748482-0
SUPERSEDED BY 748482-5	-	.125 DIA HOLE	DETAIL H	.000030 MIN	1-748482-9
SUPERSEDED BY 748482-5	-	DETAIL L	DETAIL G	.000030 MIN	1-748482-5
SUPERSEDED BY 748482-5	-	DETAIL L	DETAIL H	.000030 MIN	1-748482-4
OBSELETE	-	DETAIL K	DETAIL G	GOLD FLASH	1-748482-2
SUPERSEDED BY 748482-5	-	DETAIL K	DETAIL G	.000030 MIN	748482-6
-	TRAYS	DETAIL K	DETAIL H	.000030 MIN	748482-5
SUPERSEDED BY 748482-5	-	DETAIL K	.125 DIA	.000030 MIN	748482-4



DO NOT SCALE PRINT. UNLESS SPECIFIED DIMENSIONS IN INCHES TOLERANCES ON:	DR 1-27-88 C.RICHARD	AMP INCORPORATED Harrisburg, Pa. 17105
2 PLC DEC ± .005	CHK 1-29-88 S.WELDON	NAME
ANGLES ± 2°	APPD 1-29-88 P.KISSINGER	RECEPTACLE ASSY, SIZE 3, 44 POSN, RIGHT ANGLE, FRONT METAL SHELL, AMPLIMITE® HD-22
MATERIAL MOLDED PARTS: △	APPD 2-1-88 C.ROHDE	PRODUCT SPEC 108-1092
CONTACTS: △	APPLICATION SPEC 114-40021	SIZE D
SHELL: △	WEIGHT	FSCM NO 00779
HARDWARE: △		DRAWING NO 748482
		SCALE 4:1
		SHEET 1 OF 1