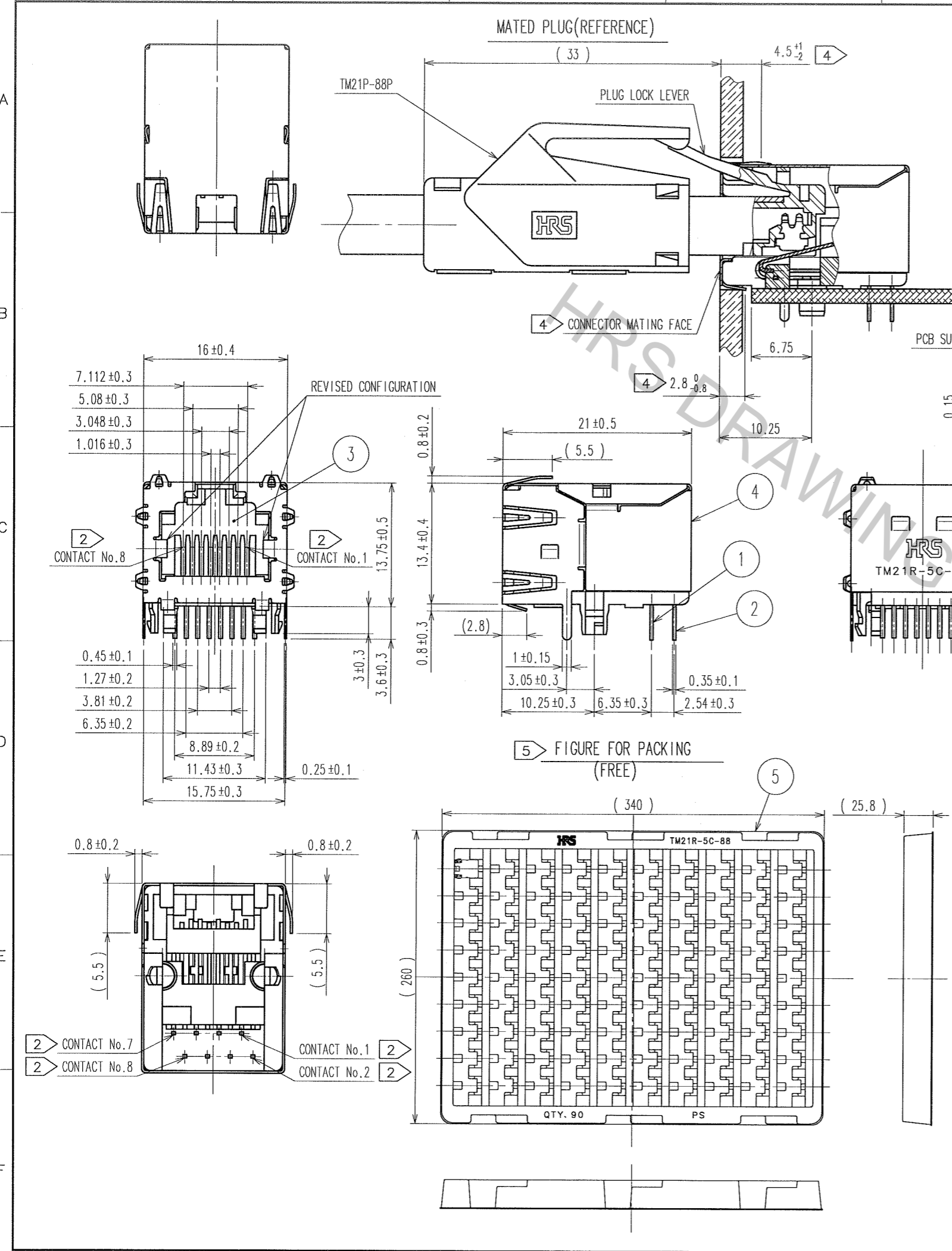


Nov.1.2017 Copyright 2017 HIROSE ELECTRIC CO., LTD. All Rights Reserved.

COUNT	DESCRIPTION OF REVISIONS	BY	CHKD	DATE	COUNT	DESCRIPTION OF REVISIONS	BY	CHKD	DATE



PANEL CUT OUT(REFERENCE)

PCB PATTERN(REFERENCE)
MOUNTING SIDE(t=1.6)

- NOTE 1 MODULAR JACK CONFORMING TO CAT5e.
REQUIREMENTS OF CAT6 ARE ALSO SATISFIED IN LINK CONFIGURATION.
APPLICABLE PLUG CONNECTOR: TM21P-88P
- 2 CONTACT LAYOUT IS DIFFERENT IN CONTACT PORTION AND LEAD PORTION.
NOTE THAT THE CONTACT NO.1 AND NO.2, NO.7 AND NO.8 ARE SWITCHED.
(CONTACT PORTION 1,2,3,4,5,6,7,8 → LEAD PORTION 2,1,3,4,5,6,8,7)
- 3 NOTCH IN ACCORDANCE WITH THE DIMENSION FOR PLUG LOCK LEVER SPACE WHEN MANUFACTURING PANEL.
- 4 CONTACT POSITIONS OF OUTER SHIELD SPRINGS SEEING FROM FRONT VIEW ARE AS SHOWN BELOW
FOR YOUR REFERENCE OF PANEL LOCATION.
UPPER AND SIDE: 4.5⁺¹/₋₂ LOWER: 2.8⁰/_{-0.8}
- 5 TO BE PACKED IN TRAY: 90pcs/TRAY.

NO.	MATERIAL	FINISH, REMARKS	NO.	MATERIAL	FINISH, REMARKS
3	PBT	UL94V-0(BLACK)	5	POLYSTYRENE	
2	COPPER ALLOY	SELECTIVE GOLD PLATE	4	COPPER ALLOY	TIN REFLOW PLATING
1	COPPER ALLOY	SELECTIVE GOLD PLATE			

CODE NO.(OLD) CL	DRAWN Y. Sato 05.10.04	DESIGNED T. Taniguchi 05.10.04	CHECKED Y. Enami 05.10.07	APPROVED H. Mura 05.10.13	RELEASED
---------------------	------------------------------	--------------------------------------	---------------------------------	---------------------------------	----------

SCALE 2 : 1 UNITS mm	DRAWING NO. EDC3-122761-02 HRS HIROSE ELECTRIC CO., LTD	PART NO. TM21R-5C-88(50)	CODE NO. CL222-2893-2-50	1/1
-------------------------------	---	-----------------------------	-----------------------------	-----

TO
Q