

# Camloc

Motion Control



RS Article No.

346-9604	347-3265
346-9610	347-3271
346-9626	339-9088
346-9632	
339-9094	
348-9989	
346-9597	
347-3243	
347-3259	



## Gas Spring Accessories

### Mounting Brackets & End Fittings

The range of Camloc gas springs is complimented by specially designed mounting brackets and end fittings. Together the extensive range, creates a wide range of easy-to-assemble fixing options to suit your application.

The mounting brackets are manufactured in carbon steel with zinc and clear passivate, the components achieve a minimum of 72 hours of salt spray testing under ASTM B117.

They are designed for ease of assembly with ball pins for ball joints and ISO thread for threaded pins for lock nuts and split pins. The brackets combine compact design with strength – offering an extensive force range capability.

End fittings can be either the same or you can choose different sizes and types for each end. However, we would always recommend mounting gas springs on your application using a ball joint at one end to reduce the risk of side loading.

### Benefits

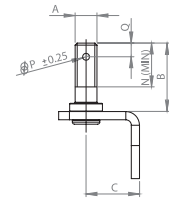
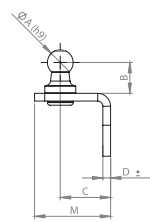
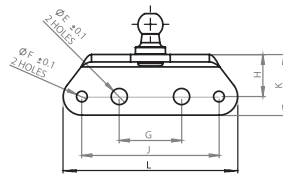
- **Easy installation**
- **Maintenance free**
- **A wide range of options available for flexibility of mounting**
- **Salt spray tested under ASTM B117**
- **BS EN ISO 9001 Registered Company**



## MOUNTING BRACKETS

### 90° Brackets

RS PART NO	CAMLOC PART NO	ALTERNATIVE	A	B	C	D	E	F	G	H	J	K	L	M	N	P	Q	COMPATIBLE CAMLOC END FITTINGS
346-9610	004263	BALL PIN	10	12	20	3	6.5	4.3	25	17	55	24.5	70	30	-	-	-	B8, P8, P9
346-9632	004267	THREADED PIN	M8x1.25	25	20	3	6.5	4.3	25	17	55	24.5	70	30	16	2.5	5	E3, F2, F4, Z2, Z4

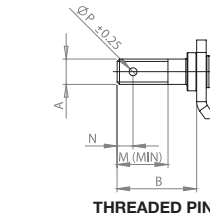
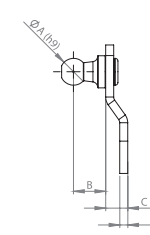
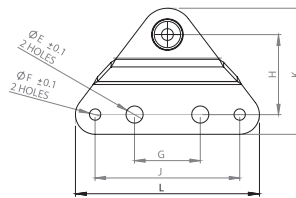


THREADED PIN

BALL PIN

### Flat Brackets

RS PART NO	CAMLOC PART NO	ALTERNATIVE	A	B	C	D	E	F	G	H	J	K	L	M	N	P	COMPATIBLE CAMLOC END FITTINGS
346-9604	004262	BALL PIN	10	12	8	3	6.5	4.3	25	30	55	47.5	70	-	-	-	B8, P8, P9
346-9626	004266	THREADED PIN	M8x1.25	25	8	3	6.5	4.3	25	30	55	47.5	70	16	5	2.5	E3, F2, F4, Z2, Z4



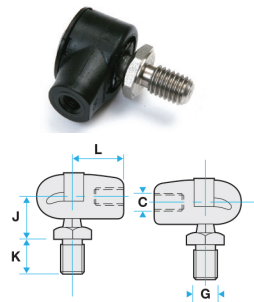
THREADED PIN

BALL PIN

## END FITTINGS

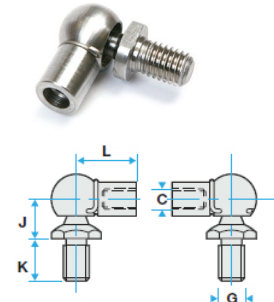
### Nylon Ball Joint with 303 Stainless Steel Pin

RS PART NO	CAMLOC PART NO	DIM	PV
339-9088	084255	J	12.0mm
		K	12.5mm
		G	M8x1.25
		C	M6x1.0
		L	18.0mm
		+/-	0.25mm



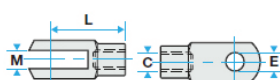
### Ball Joints - 303 Stainless Steel

RS PART NO	348-9989	346-9597
CAMLOC PART NO	084331	10-4333
DIM	G1	G5
E +/-	12.0mm	8.0mm
M +/-	12.5mm	8.25mm
G	M8x1.25	M8x1.25
L +/-	18.0mm	30.0mm
C	M6x1.0	M8x1.25



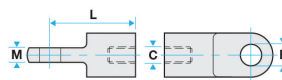
### Clevis Forks - 303 Stainless Steel

RS PART NO	347-3243	347-3259
CAMLOC PART NO	084337	10-4338
DIM	H1	H2
E +/-	6.0mm	8.0mm
M +/-	6.25mm	8.25mm
L +/-	24.0mm	32.0mm
C	M6x1.0	M8x1.25



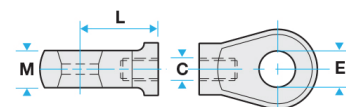
### Stainless Steel Flat Eyes

RS PART NO	347-3265	347-3271
CAMLOC PART NO	08-4334	10-4335
DIM	J1	J2
E +/-	8.0mm	8.0mm
M +/-	5.12mm	8.12mm
L +/-	25.0mm	32.0mm
C	M6x1.0	M8x1.25



### Nylon Eye

RS PART NO	CAMLOC PART NO	DIM	E3
339-9094	080336	E +/-	8.1mm
		M +/-	10.0mm
		L +/-	21.0mm
		C	M6x1.0



Dimensions are shown in millimetres. Please note: Some brackets may not be compatible with certain configurations of 10-23 and 14-28 gas springs. If you have any questions about specifying brackets or end fittings please call +44 (0)116 274 3600

P5162/June2014/V1

### Camloc Motion Control Ltd

15 New Star Road, Leicester, LE4 9JD, UK  
 Tel: +44 (0)116 274 3600 Fax: +44 (0)116 274 3620  
 E-mail: info@camloc.com Website: www.camloc.com

Vari-Lift, Swift & Sure, Stop & Stay and Econoloc are trade names of Camloc Motion Control Ltd.



FMS83999