

CoreLine Waterproof

WT120C LED34S/840 PSU L1500



WT120C - LED Module, system flux 3400 lm - Power supply unit

Whether for a new building or renovation of an existing space, customers want lighting solutions that provide quality of light and substantial energy and maintenance savings. The new CoreLine Waterproof range of LED products can be used to replace traditional waterproof luminaires with fluorescent lamps. The process of selecting, installing and maintaining is so easy – it's a simple switch.

Product data

• General information

Product family code	WT120C [WT120C]
Number of light sources	1 [1 pc]
Lamp family code	LED34S [LED Module, system flux 3400 lm]
Lamp colour code	840 [840 white]
Light source replaceable	No [No]
Driver/power unit/transformer	PSU [Power supply unit]
Driver included	Yes [Yes]
Optical cover/lens type	PC [Polycarbonate]
Dimmable	No [No]
Connection	PIP [Push-in connector and pull relief]
Protection class IEC	CL1 [Safety class I]
Ingress protection code	IP65 [Dust penetration-protected, jet-proof]
Mech. impact protection code	IK08 [5 J vandal-protected]
Length	L1500 [1500 mm]
Colour	GR [Grey]
Glow-wire test	850/30 [Temperature 850 °C, duration 30 s]
Flammability mark	F [For mounting on normally flammable surfaces]
CE mark	CE [CE mark]

• Electrical

Input voltage	220-240 V [220 to 240 V]
Input frequency	50-60 Hz [50 to 60 Hz]

• Mechanical

Housing material	PC [Polycarbonate]
------------------	--------------------

Optic material	PC [Polycarbonate]
Optical cover/lens material	PC [Polycarbonate]

• Initial perform. (IEC compliant)

Initial input power	29 W [29 W]
Initial luminous flux	3400 Lm
Initial LED luminaire efficacy	117 Lm/W
Lamp colour temperature	4000 [4000 K]
Colour Rendering Index	>80 [>80]
Initial chromaticity	(0.38, 0.38) SDCM <3.5

• Over time perform. (IEC compliant)

Median useful life L90B50	25000 hr
Median useful life L80B50	50000 hr
Driver failure rate at 5000 h	1 %

• Application conditions

Average ambient temperature	T25 [+25 °C]
Ambient temperature range	-20 to +35°C [-20 to +35 °C]
Maximum dim level	- [Not applicable]
Suitable for random switching	Yes [Yes (relates to presence/movement detection and daylight harvesting)]



PHILIPS

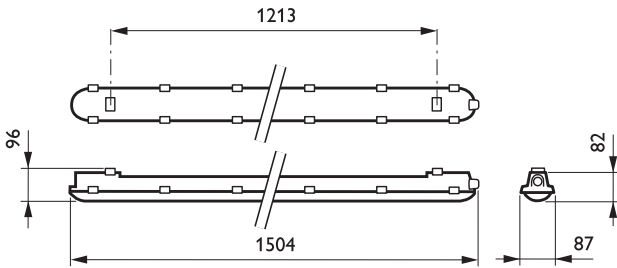
Product Data

Order code 840473 00
 Full product code 871829184047300
 Full product name WT120C LED34S/840 PSU L1500
 Order product name WT120C LED34S/840 PSU L1500
 Pieces per pack 0
 Packs per outerbox 1
 Bar code on 8718291840473
 outerbox - EAN3

Logistic code(s) - 910500453337
 12NC
 Net weight per piece 1.820 kg



Dimensional drawing



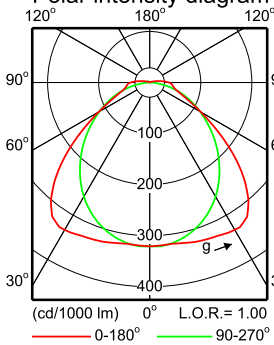
WT120C LED34S/840 PSU L1500

Photometric data

WT120C 1xLED34S/840 L1500

1 x 3400 lm

Polar intensity diagram



Light output ratio 1.00
 Service upward 0.03
 Service downward 0.97

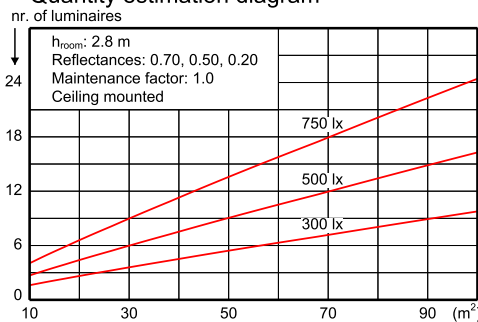
CIE flux code 48 81 95 97 100

S/H ratio crosswise max. 1.8
 lengthwise max. 1.7

UGR_{cen} (4Hx8H, 0.25H) 23
 UTE71-121: 0.97D + 0.03T

LWV1837800

Quantity estimation diagram

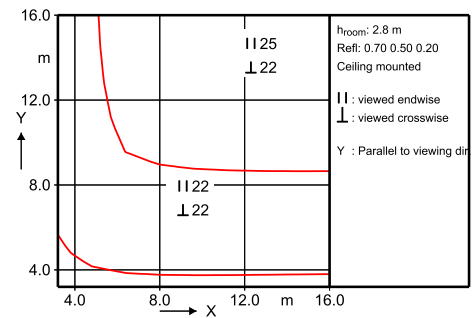


Utilisation factor table

Room Index k	Reflectances for ceiling, walls and working plane (CIE)											
	0.80	0.80	0.70	0.70	0.70	0.70	0.50	0.50	0.30	0.30	0.00	0.00
0.60	0.48	0.46	0.47	0.46	0.45	0.38	0.37	0.32	0.36	0.32	0.30	0.00
0.80	0.59	0.55	0.58	0.56	0.55	0.47	0.46	0.41	0.45	0.41	0.38	0.00
1.00	0.68	0.63	0.66	0.64	0.62	0.55	0.54	0.49	0.53	0.48	0.46	0.00
1.25	0.77	0.70	0.75	0.72	0.69	0.62	0.61	0.56	0.60	0.56	0.53	0.00
1.50	0.83	0.75	0.81	0.77	0.74	0.68	0.67	0.62	0.65	0.61	0.58	0.00
2.00	0.93	0.83	0.90	0.86	0.82	0.76	0.75	0.71	0.73	0.70	0.67	0.00
2.50	0.99	0.88	0.96	0.91	0.86	0.82	0.80	0.76	0.78	0.75	0.72	0.00
3.00	1.04	0.91	1.01	0.95	0.90	0.85	0.83	0.80	0.82	0.79	0.76	0.00
4.00	1.10	0.95	1.06	0.99	0.93	0.90	0.88	0.85	0.86	0.84	0.80	0.00
5.00	1.13	0.97	1.09	1.02	0.96	0.93	0.91	0.88	0.88	0.86	0.83	0.00

Ceiling mounted

UGR diagram



Luminance Table

Plane Cone	0.0	45.0	90.0
45.0	7947	9074	7441
50.0	6753	8504	7063
55.0	5435	7313	6672
60.0	4275	5800	6302
65.0	3437	4335	5952
70.0	2907	3228	5581
75.0	2682	2575	5079
80.0	2778	2251	4284
85.0	3129	2231	2945
90.0	3439	2515	4029

(cd/m²)

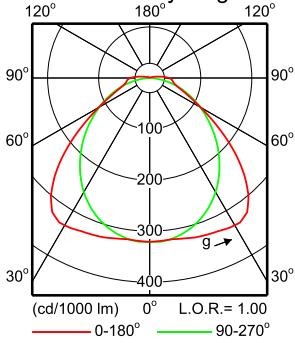
2014-08-01

WT120C 1xLED34S/840 L1500

WT120C 1xLED34S/840 EL1 L1500 EM

1 x 360 lm

Polar intensity diagram



Light output ratio 1.00
 Service upward 0.03
 Service downward 0.97

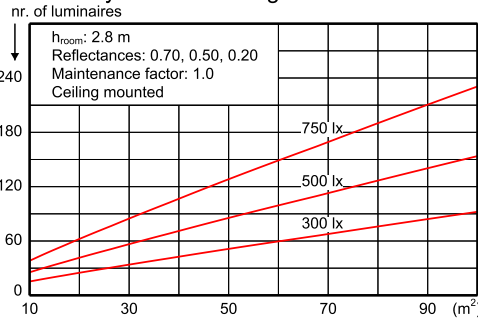
CIE flux code 48 81 95 97 100

S/H ratio crosswise max. 1.8
 lengthwise max. 1.7

UGR_{cen} (4Hx8H, 0.25H) 20
 UTE71-121: 0.97D + 0.03T

LVW1837800

Quantity estimation diagram

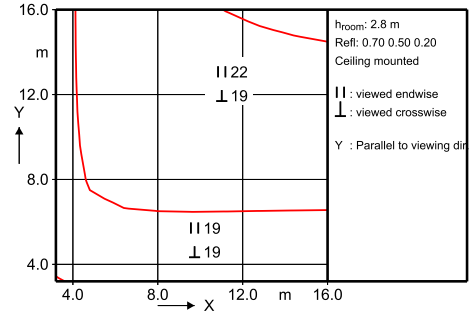


Utilisation factor table

Room Index k	Reflectances for ceiling, walls and working plane (CIE)											
	0.80	0.80	0.70	0.70	0.70	0.70	0.50	0.50	0.30	0.30	0.00	0.00
0.60	0.48	0.46	0.47	0.46	0.45	0.38	0.37	0.32	0.36	0.32	0.30	0.30
0.80	0.59	0.55	0.58	0.56	0.55	0.47	0.46	0.41	0.45	0.41	0.38	0.38
1.00	0.68	0.63	0.66	0.64	0.62	0.55	0.54	0.49	0.53	0.48	0.46	0.46
1.25	0.77	0.70	0.75	0.72	0.69	0.62	0.61	0.56	0.60	0.56	0.53	0.53
1.50	0.83	0.75	0.81	0.77	0.74	0.68	0.67	0.62	0.65	0.61	0.58	0.58
2.00	0.93	0.83	0.90	0.86	0.82	0.76	0.75	0.71	0.73	0.70	0.67	0.67
2.50	0.99	0.88	0.96	0.91	0.86	0.82	0.80	0.76	0.78	0.75	0.72	0.72
3.00	1.04	0.91	1.01	0.95	0.90	0.85	0.83	0.80	0.82	0.79	0.76	0.76
4.00	1.10	0.95	1.06	0.99	0.93	0.90	0.88	0.85	0.86	0.84	0.80	0.80
5.00	1.13	0.97	1.09	1.02	0.96	0.93	0.91	0.88	0.88	0.86	0.83	0.83

Ceiling mounted

UGR diagram



Luminance Table

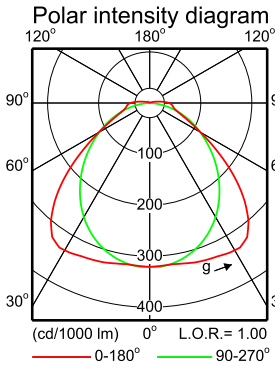
Plane Cone	0.0	45.0	90.0
45.0	4179	4596	3673
50.0	3552	4284	3446
55.0	2858	3661	3211
60.0	2248	2883	2980
65.0	1808	2136	2751
70.0	1529	1574	2498
75.0	1410	1238	2165
80.0	1461	1062	1668
85.0	1646	1023	945
90.0	1809	1100	427

(cd/m²)

2014-08-01

WT120C 1xLED34S/840 EL3 L1500 EM

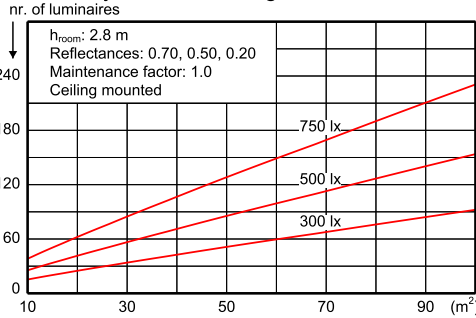
1 x 360 lm



Light output ratio 1.00
 Service upward 0.03
 Service downward 0.97
 CIE flux code 48 81 95 97 100
 S/H ratio crosswise max. 1.8
 lengthwise max. 1.7
 UGRcen (4Hx8H, 0.25H) 20
 UTE71-121: 0.97D + 0.03T

LWV1837800

Quantity estimation diagram

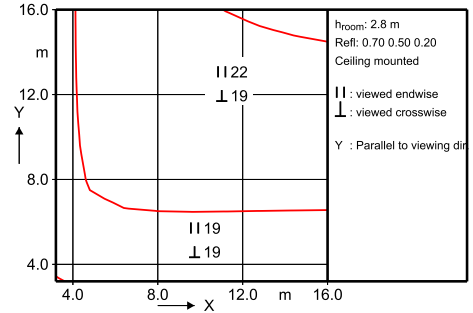


Utilisation factor table

Room Index k	Reflectances for ceiling, walls and working plane (CIE)											
	0.80	0.80	0.70	0.70	0.70	0.70	0.50	0.50	0.30	0.30	0.00	0.00
0.60	0.48	0.46	0.47	0.46	0.45	0.38	0.37	0.32	0.36	0.32	0.30	0.30
0.80	0.59	0.55	0.58	0.56	0.55	0.47	0.46	0.41	0.45	0.41	0.38	0.38
1.00	0.68	0.63	0.66	0.64	0.62	0.55	0.54	0.49	0.53	0.48	0.46	0.46
1.25	0.77	0.70	0.75	0.72	0.69	0.62	0.61	0.56	0.60	0.56	0.53	0.53
1.50	0.83	0.75	0.81	0.77	0.74	0.68	0.67	0.62	0.65	0.61	0.58	0.58
2.00	0.93	0.83	0.90	0.86	0.82	0.76	0.75	0.71	0.73	0.70	0.67	0.67
2.50	0.99	0.88	0.96	0.91	0.86	0.82	0.80	0.76	0.78	0.75	0.72	0.72
3.00	1.04	0.91	1.01	0.95	0.90	0.85	0.83	0.80	0.82	0.79	0.76	0.76
4.00	1.10	0.95	1.06	0.99	0.93	0.90	0.88	0.85	0.86	0.84	0.80	0.80
5.00	1.13	0.97	1.09	1.02	0.96	0.93	0.91	0.88	0.88	0.86	0.83	0.83

Ceiling mounted

UGR diagram



Luminance Table

Plane Cone	0.0	45.0	90.0
45.0	4179	4596	3673
50.0	3552	4284	3446
55.0	2858	3661	3211
60.0	2248	2883	2980
65.0	1808	2136	2751
70.0	1529	1574	2498
75.0	1410	1238	2165
80.0	1461	1062	1668
85.0	1646	1023	945
90.0	1809	1100	427

(cd/m²)

2014-08-01

WT120C 1xLED34S/840 EL3 L1500 EM



© 2014 Koninklijke Philips N.V. (Royal Philips)
 All rights reserved.

Specifications are subject to change without notice. Trademarks are the property of Koninklijke Philips N.V. (Royal Philips) or their respective owners.

www.philips.com/lighting

2014, August 7
 data subject to change