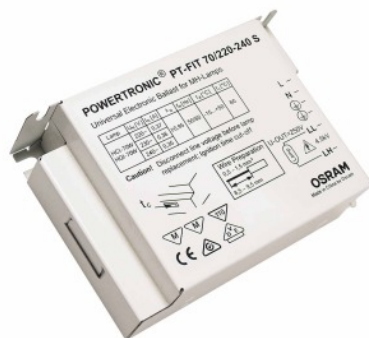


PT-FIT 70/220...240 S

POWERTRONIC PT-FIT S | ECG for HID lamps, for installation in luminaires



Areas of application

- Shop lighting
- Health and fitness areas (in dry, corrosion-protected place)
- Effect and accent lighting

Product benefits

- Optimized cost/benefit factor
- Compact dimensions and low weight for small luminaire designs
- Automatic safety shutdown of lamps in the event of a defect or at end of life (EoL)

Product features

- Energy Efficiency Index EEI: A2
- Supply voltage: 220...240 V
- Line frequency: 50...60 Hz
- RI suppression: to EN 55015/CISPR 15
- Safety: to EN 61347-2-12
- Line harmonics according to EN 61000-3-2
- Immunity according to EN 61547

Technical data

Electrical data

| | |
|--|----------------------|
| Lamp wattage | 73 W |
| Line current | 0.36 A ¹⁾ |
| Ignition voltage | 4.5 kVp |
| Operating frequency | 0.200...0.240 kHz |
| System wattage | 80.00 W |
| ECG efficiency | 92 % |
| Input voltage AC | 220...240 V |
| Input voltage range | 198...264 V |
| Mains frequency | 50...60 Hz |
| Power factor λ | 0.95 ²⁾ |
| Inrush current | 45 A ³⁾ |
| Max. no. of ECGs on circuit breaker 10 A | 7 ⁴⁾ |
| Max. no. of ECGs on circuit breaker 16 A | 13 ⁴⁾ |
| Max. no. of ECGs on 16A MCB with EBN-OS | 32 ⁴⁾ |
| Protective conductor current | 0.3 mA |
| U-OUT (working voltage) | 250 V |
| Max. working voltage between LH and LL | 250 V |
| Max. working voltage betw. LL/LH & earth | 250 V |
| Max. capacitance of wire ECG/lamp | 120 pF |

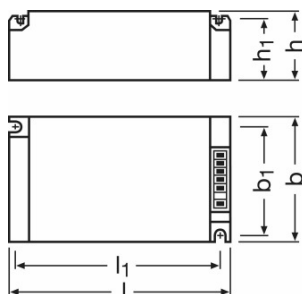
1) At 230 V_{AC}

2) Minimum

3) $t_{width} = 250 \mu s$ (measured at 50 % I_{peak})

4) Type B

Dimensions & weight



| | |
|--------|----------|
| Length | 110.0 mm |
| Width | 75.0 mm |

Product datasheet

| | |
|--------------------------------------|---|
| Height | 30.0 mm |
| Mounting hole spacing, length | 99.0 mm |
| Mounting hole spacing, width | 64.0 mm |
| Cable cross-section, input side | 0.5...1.0 / 0.5...1.5 mm ² ¹⁾ |
| Cable cross-section, output side | 0.5...1.0 / 0.5...1.5 mm ² ¹⁾ |
| Wire preparation length, input side | 8.5...9.5 mm |
| Wire preparation length, output side | 8.5...9.5 mm |
| Product weight | 250.00 g |

¹⁾ With ferrule / Without ferrule

Colors & materials

| | |
|-----------------|-------|
| Casing material | Metal |
|-----------------|-------|

Temperatures

| | |
|--------------------------------------|--------------|
| Ambient temperature range | -15...+55 °C |
| Maximum temperature at tc test point | 85 °C |

Lifespan

| | |
|--------------|-----------------------|
| ECG lifetime | 30000 h ¹⁾ |
|--------------|-----------------------|

¹⁾ At maximum T_c / 10 % failure rate

Additional product data

| | |
|------------------|---------------|
| Design / version | Built-in unit |
|------------------|---------------|

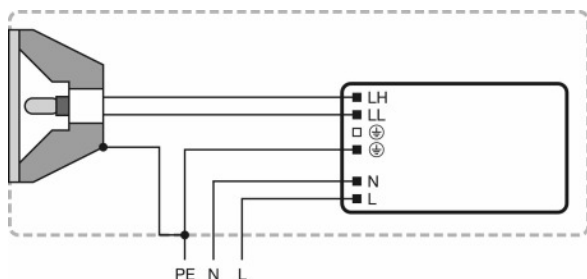
Capabilities

| | |
|--|---|
| Max. cable length to lamp/LED module | 1.5 m |
| Overheating protection | Power reduction and switch off at T > 85 °C at the tc point |
| ECG reset time | > 0.5 s |
| Dimmable | No |
| Restriction on ignition time | 20 min |
| Suitable for fixtures with prot. class | I |

Certificates & standards

| | |
|---------------------------|--|
| Approval marks – approval | VDE / VDE-EMC / EAC / C-Tick |
| Type of protection | IP20 |
| EEL – Energy Label | A2 |
| Standards | Acc. to EN 61347-2-12/Acc. to EN 55015/Acc. to EN 61000-3-2/Acc. to EN 61547 |

Wiring Diagram



Wiring diagram





Thermal characteristics

Ballast losses and lamp heat radiation can lead to heat accumulation in a completely closed case. Therefore it is necessary to ensure that the temperature at the measuring point t_c of the ECG does not exceed the maximum value.

Attention!

For safety reasons disconnect the device before replacing the lamp!

Download Data

| File | |
|---|---|
|  | Tender Documents Tender Document for POWERTRONIC EVG.eng |
|  | Certificates EMC-Marks approval |
|  | Certificates VDE-Marks approval |
|  | Certificates EAC PT family |

Product datasheet



Declarations of conformity
Declaration of conformity



Installation/Operation notice
Technical guide - POWERTRONIC for HID-lamps (GB)



On-Pack-Info
EAC - PTI S PT-FIT S

Logistical Data

| Product code | Product description | Packaging unit (Pieces/Unit) | Dimensions (length x width x height) | Volume | Gross weight |
|---------------|-----------------------|------------------------------|--------------------------------------|----------------------|--------------|
| 4008321386649 | PT-FIT 70/220...240 S | Shipping carton box 20 | 412 mm x 136 mm x 152 mm | 8.52 dm ³ | 5269.89 g |

The mentioned product code describes the smallest quantity unit which can be ordered. One shipping unit can contain one or more single products. When placing an order, for the quantity please enter single or multiples of a shipping unit.

Disclaimer

Subject to change without notice. Errors and omission excepted. Always make sure to use the most recent release.