

Datasheet

Art.No. R1.188.0520.0

Device for monitoring of safety-related circuits SNE4004K AC/DC
24V (A)

output expansion unit, 4 enabling current paths, 3 signalling outputs, AC/DC 24 V
50-60Hz, screw terminals fixed



Art.No.	R1.188.0520.0
EAN	4015573808379
Order unit	1 pieces

Approvals



Technical data

General

Protection degree according to DIN EN 60529 (housing)	IP40
Protection degree according to DIN EN 60529 (terminals)	IP20
Ambient temperature min.	-25 °C
Ambient temperature max.	55 °C
Tightening moment	0.6 Nm
Suited for safety functions	Yes
Category according to EN ISO 13849-1	3
Muting possible	No
Feedback circuit	Yes
Start contact	No
Performance level acc. to EN ISO 13849-1	d
SIL according to IEC 62061	2
Stop category acc. to IEC 60204	
Rail mounting possible	Yes

Connection Data

Detachable clamps	No
Type of electric connection	Screw connection

Application

Model	Expansion device
Suitable for monitoring of magnetic switches	No
Suitable for monitoring of proximity switches	Yes

Suitable for monitoring of emergency-stop circuits	No
Suitable for monitoring of optoelectronic protection equipment	No
Suitable for monitoring of position switches	No
Suitable for monitoring of valves	No

Output circuit

Contact material	Ag-alloy, gold-plated
Max. total current I ₂ of all current path	25 A ²
Application category AC-15 (NO)	Ue 230V, Ie 5A
Application category DC-13 (NO)	Ue 24V, Ie 5A
Short-circuit protection (NO), max. fuse insert	6 A class gG fuse, fuse integral
Mechanical life	107 switching cycles
Outputs, signalling function, undelayed, with contact	3
Outputs, signalling function, delayed, with contact	0
Outputs, safe, undelayed, with contact	4
Outputs, safe, delayed, with contact	0

Control circuit

max. resistivity, per channel	$\leq (5 + (1,176 \times U_B / U_N - 1) \times 100) \Omega$
-------------------------------	-------------------------------------------------------------

Supply circuit

Nominal voltage U _N	DC 24 V
Operating voltage min.	20.4 V
Operating voltage max.	26.4 V
Min. rated control supply voltage at AC 50 Hz	20.4 V
Max. rated AC voltage for controls, 50 Hz	26.4 V
Min. rated DC voltage for controls	20.4 V
Max. rated DC voltage for controls	26.4 V
Min. rated control supply voltage at DC	20.4 V
Rated control supply voltage at AC 60HZ	20.4 V
Rated control supply voltage at AC 50HZ	26.4 V

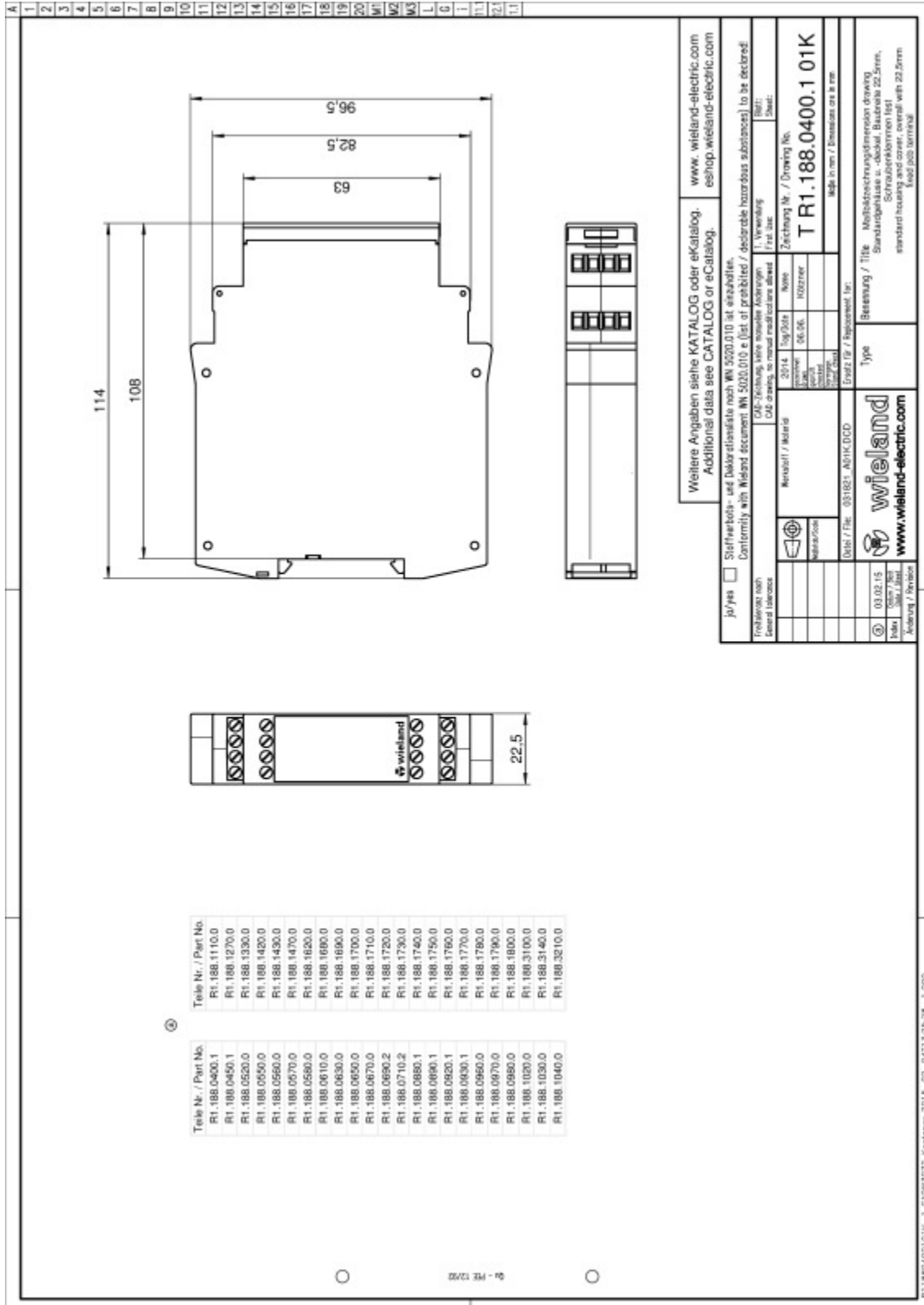
Dimensions

Depth	114 mm
Width	22.5 mm
Height	96.5 mm

Classification

ECLASS 8.1	27371819: Device for monitoring of safety-related circuits
ETIM 5.0	EC001449: Device for monitoring of safety-related circuits
ETIM 4.0	EC001449: Device for monitoring of safety-related circuits
ETIM 3.0	EC001449: Emergency-stop relay

Drawings



Weitere Angaben siehe KATALOG oder eKatalog. www.wieland-electric.com
 Additional data see CATALOG or eCatalog. eshop.wieland-electric.com

Staffwerksteine sind deklarationslos nach DIN 5020.010 als einphasig.
 Conformity with Wieland document WM 5020.010 e (list of prohibited / delectable hazardous substances) to be declared

Conformity with RoHS
 Conforms with RoHS (not applicable)
 Conforms with REACH (not applicable)

Material / Matière: 2018L Top/30th Name: Zeichnung Nr. / Drawing No.
 Lagercode: 06.06.06 Normen: T R1.188.0400.1 01K
 Material: 2018L Top/30th Name: Zeichnung Nr. / Drawing No.
 Lagercode: 06.06.06 Normen: T R1.188.0400.1 01K

DNB / File: 031821_A0114.DWG
 Drawn by / Dessiné(e) par: Made in Germany / Dessiné(e) en Allemagne

Type: Besimmung / Titre: Nichtabzweigungsdimension drawing
 Standardgröße in mm: Abstand: 22,5mm,
 Standard housing and cover: overall width 22,5mm
 fixed post terminal

03.02.15
 Index: 00114
 Änderung / Revision

R11880400101K_1_CAD093072_Kaufman 2015-02-02-04T13:25:28 1.000