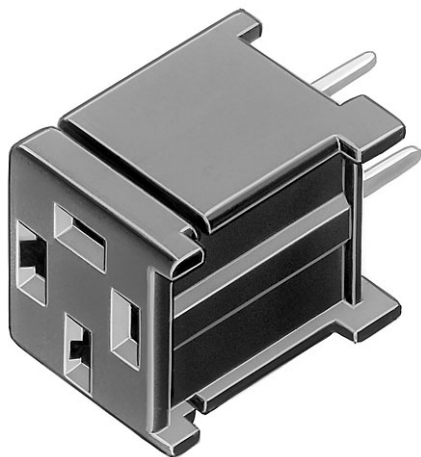


EAO – Your Expert Partner for Human Machine Interfaces

18-945 - PCB plug-in base

18-945 - PCB plug-in base



Attention: The preview is based on a sample product. This can differ from your current configuration.

Other Attributes

Weight	0.001 kg
Pins	axial

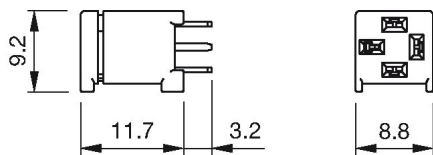
Connection Method

Terminal	PCB
----------	-----

EAO – Your Expert Partner for Human Machine Interfaces

18-945 - PCB plug-in base

Dimensions



Component layout

