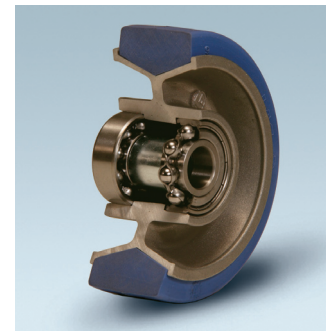


ALLUMINIO + GOMMA PER ALTE TEMPERATURE

- Anello in gomma elastica blu antitraccia.
- Nucleo in lega di alluminio pressofuso.
- Cuscinetti a sfere per elevate temperature, schermati.
- Elevata scorrevolezza, silenziosità.
- Temperatura di impiego: -40°C / +250°C.
- Per movimentazioni manuali su pavimenti in ottimo stato.
- Portate valutate secondo EN 12527 e EN 12532 senza applicare ostacoli.



ALLUMINIUM + HEAT RESISTING RUBBER

- Blue elastic non marking rubber ring.
- Die-cast aluminium core.
- Shielded ball bearings suitable for high temperatures.
- Excellent smooth and silent running.
- Temperature range: -40°C / +250°C (-40°F / +482°F).
- For manual applications over floors in perfect condition.
- Load ratings according to EN 12532 and EN 12527 without obstacles.

ALUMINIUM + CAOUT CHOUC POUR HAUTES TEMPERATURES

- Anneau en caoutchouc non tachant bleu.
- Corps en alliage d'aluminium moulé sous pression.
- Roulements à billes pour hautes températures.
- Faible résistance ou roulement, silencieuse.
- Température d'emploi: -40°C / +250°C.
- Pour utilisation manuelle sur sols en très bon état.
- Charges admissibles définies selon EN 12532 et EN 12527 sans obstacles.

ALUMINIUM + HITZENBESTÄNDIGER GUMMI

- Blaue Elastik spurloser Gummi Ring.
- Radkern aus Spritzguss-Aluminiumlegierung.
- Abgeschirmte hitzenbeständiger Rillenkugellager.
- Sehr geringer Rollwiderstand, geräuschloser Lauf.
- Arbeitstemperatur: -40°C / +250°C.
- Für Handbewegung auf Boden in sehr gutem Zustand.
- Tragfähigkeit nach EN 12532 und EN 12527 ohne Hindernisse festgestellt.

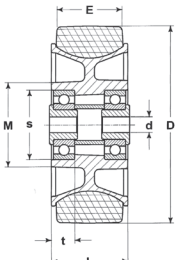
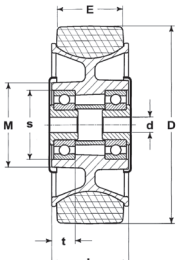

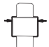


ALUMINIO + GOMA PARA TEMPERATURAS ELEVADAS

- Aro de goma elástica anti marca azul.
- Nucleo en fundición de aluminio vaciado a presión.
- Cojinetes a bolas para temperaturas elevadas.
- Elevada facilidad de rodadura, silenciosidad.
- Temperatura de empleo: -40°C / +250°C.
- Para desplazamientos manuales sobre pavimentaciones óptimas.
- Capacidades de carga estimadas conforme a EN 12532 y EN 12527 sin poner obstáculos.

	D	100	100
	E	35	35

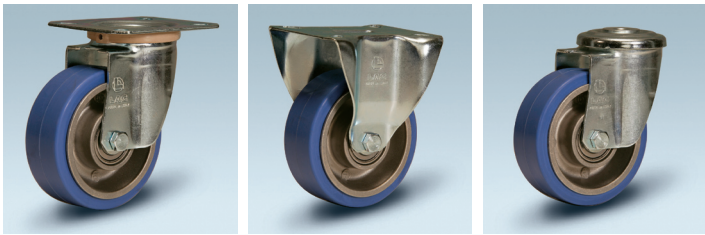


CUSCINETTI A SFERE DI PRECISIONE - PRECISION BALL BEARINGS - PRÄZISION RILLENKUGELLAGER
ROULEMENTS À BILLES DE PRÉCISION - COJINETES A BOLAS DE PRECISION

Art. N.	27007		27007PF ■	
 d	8*		8**	
 L	41,5		42	
 M	48		48	
 Kg.	100		100	




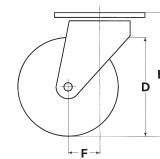
 D	100	100
 E	35	35



 D	100	100
 E	35	35

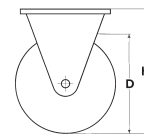
SUPPORTI GIREVOLI - SWIVEL CASTORS - LENKROLLEN - ROULETTES PIVOTANTES - CONJUNTOS GIRATORIOS

Art. N.	27107	27107PF ■	27407	27407PF ■	
d	8	8	8	8	




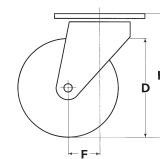
SUPPORTI FISSI - FIXED CASTORS - BOCKROLLEN - ROULETTES FIXES - CONJUNTOS FIJOS

Art. N.	27207	27207PF ■	27507	27507PF ■	
d	8	8	8	8	


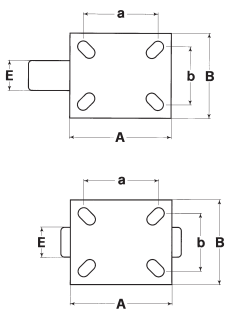
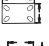
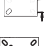
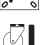



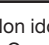


SUPPORTI GIREVOLI A FORO - SWIVEL CASTORS WITH BOLT HOLE - RÜCKENLOCH LENKROLLEN
ROULETTES PIVOTANTES A Oeil - CONJUNTOS GIRATORIOS CON TALADRO PASADOR

Art. N.	27307HA	27307PFHA ■	27607GA	27607PFGA ■	
Art. N.	27307HB	27307PFHB ■	27607GB	27607PFGB ■	
d	8	8	8	8	



DATI TECNICI - TECHNICAL DATA - TECHNISCHE DATEN - DONNÉES TECHNIQUES - DATOS TECNICOS

 H	128	128	128	128	
 AxB	102x83	102x83	102x83	102x83	
 axb	80x60	80x60	80x60	80x60	
 g	8	8	8	8	
 g	HA=10 / HB=12		GA=10 / GB=12		
 F	37	37	37	37	
 U	40	40	40	40	
 Kg	100	100	100	100	