

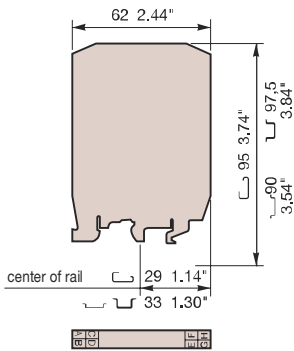
Relays and optocouplers

Relay Interfaces

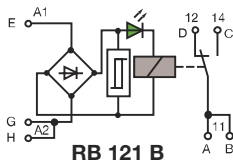
R900 relay modules



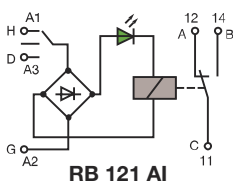
DIN 1-3



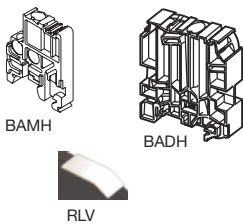
Relay blocks R900



RB 121 B



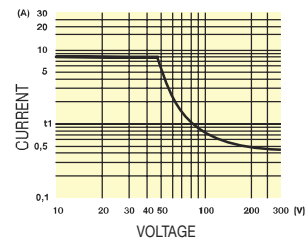
RB 121 AI



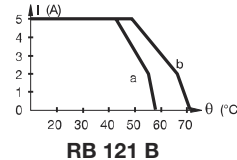
- ☐ Relay : 1 SPDT low level contacts 1 mA to 5 A - 11.5 mm .453" spacing
- ☐ Relay : 1 SPDT with switch low level contacts 1 mA to 5 A - 11.5 mm .453" spacing

Characteristics

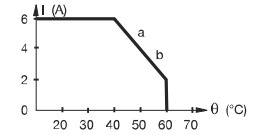
Relay characteristics	RB 121 B			RB 121 AI	
	COIL				
Rated voltage +20%, -15% on DC, ±15% on AC	110 V AC	115 V AC	230 V AC	24 V AC ±10%	24 V DC ±10%
Frequency	50 Hz	60 Hz	50 Hz	50 / 60 Hz	
Power	1.5 VA	1.6 VA	3.22 VA	0.53 VA	0.44 W
Rated current	14 mA	14 mA	14 mA	22 mA	18 mA
Drop-out voltage at 20°C	30 V AC	30 V AC	60 V AC	5.5 V	4.6 V
Permissible leakage current	2 mA max.	2 mA max.	3.6 mA max.	2.2 mA	1.8 mA
Status device	green LED				
CONTACT	1 SPDT				
Type	1 SPDT				
Voltage switching range min./max.	5 V / 150 V DC - 250 V AC				
Current switching range min./max.	1 mA / 5 A		1 mA / 6 A		
Load switching range					
AC1 min. / max.	5 mA / 1250 VA		5 mA / 1500 VA		
DC1 min. / max.	5 mW / 192 W				
Number of on-load operations	1 x 10 ⁵				
Number of off-load operations	5 x 10 ⁶				
Operating speed	F 10 ms		O 5 ms		
Bounce	1 ms				
Insulation coil / contact	3000 V RMS				
Resistance to shock coil / contact	4000 V RMS				
Insulation contact / contact	1000 V RMS				
Ambient temperature storage	-40°C to +80°C				
operating	see derating curves				
Other characteristics					
Body material	grey			UL 94 V0	
Wire	Solid wire			0.5 - 4 mm ² / 20 - 12 AWG	
size	Stranded wire			0.5 - 2.5 mm ² / 20 - 12 AWG	
Rated wire size	2.5 mm ² / 12 AWG				
Wire stripping length	7 mm .276"				
Recommended screwdriver	3.5 mm .137"				
Protection	IP20 NEMA1				
Recommended torque	0.4 - 0.6 Nm 3.5 - 5.3 lb.in				
Approvals					
Reference standards	CEI 947-7-1 / CEI 947-1 / CEI 1131-2 (in relevant parts) / CEI 60664-1 / CEM : IRC 1000-4-2, 3, 4, 5, 6.				



Derating curves



RB 121 B



RB 121 AI

Order codes

Description	Type	Order P/N	Packaging	Weight
☐ Relay module 1 SPDT low level	RB 121B-110VAC	1SNA 630 004 R0300	1	0.05
☐ Relay module 1 SPDT low level	RB 121B-115VAC	1SNA 630 005 R0400	1	0.05
☐ Relay module 1 SPDT low level	RB 121B-230VAC	1SNA 630 006 R0500	1	0.05
☐ Relay module 1 SPDT with switch low level	RB 121AI-24VAC/DC	1SNA 630 007 R0600	1	0.05

Accessories

High end section	BADH	1SNA 116 900 R2700	50
	BAMH	1SNA 114 836 R0000	50
	BAMH V0	1SNA 194 836 R0100	50
Lengthwise marker	RLV	1SNA 103 849 R0300	100
Marking method	RC55	see marking	